

## PRODUCT CATALOGUE







## OVERVIEW

ZKTeco is a multinational enterprise, that specializes in the manufacture and development of time and attendance and access control technology. With over 25 years presence in the global market, it benefits from a highly qualified team of over 1500 employees worldwide with its own manufacturing plants that, together with its R&D and engineering departments, ensures complete inhouse production of all aspects of its hardware, firmware and software.

One of the pioneers in multibiometric and RFID technology, ZKTeco's products are present in over 200 countries, with over 180 million users worldwide, and we continue to grow...

At the start of the 2010, ZKTeco Europe, the European Headquarters of ZKTeco was opened in Madrid and totally renewed in 2018, in order to provide European partners and dealers with the best possible services and solutions close at hand. ZKTeco Ireland Ltd and ZKTeco Deutschland GMBH were officially established in 2016 and 2018.

With its own, R&D, technical, financial, sales and warehousing facilities, ZKTeco Europe offers its clients complete support throughout the continent, to broaden horizons, open new markets, and manifest ZKTeco as a leading brand of T&A and Access Control technology in Europe.



The background of the page is a high-angle, aerial photograph of a dense urban skyline, likely Hong Kong, with numerous skyscrapers and buildings. On the left side, there is a large, semi-transparent red circular graphic that partially overlaps the city view. The text is overlaid on the right side of the image.

## TIME MANAGEMENT

ZKTeco time management series includes cutting-edge hybrid biometric verification technology products and solutions. It provides a full range of solutions including various fingerprints, RFID, face identification and palm verifications, time clocks, portable time clocks, time and attendance management software, etc. It meets the demand of almost all the companies in any size.

## RFID Time Attendance Terminals

SC705 is a 13.56 MHz proximity attendance management terminal incorporated with 3" color touch screen which offers a user-friendly and easy menu management. It includes the option of displaying informative messages managed directly from software.

**RFID technology:** EM/MF/Desfire Proximity

**Communication:** Ethernet, Wi-Fi

**Features:** Real-Time Data Transmission, Online/Offline operating mode, Available Special Version for University



»» SC705

## Fingerprint Time Attendance Terminals

- **Display:** 2.8" Color Display
- **Fingerprint Capacity:** 3,000
- **Sensor:** BioID sensor
- **ID Card Capacity:** 3,000 (Optional)
- **Logs Capacity:** 100,000
- **Communication:** TCP/IP, Wi-Fi, USB (host)
- **Standard Functions:** Webserver, Work Code, DST, Short Message, Self Service Query, 5 Digit User ID, T9 Input, Scheduled Bell, Automatic Status Switch
- **Optional Functions:** ID/Mifare, WDMS, RS232 External Printer
- **Power Supply:** 12V 1.5A
- **Operating Temperature:** 0 °C- 45 °C
- **Operating Humidity:** 20%-80%



»» UA760

»» UA860

### »» IN05/IN05-A



- **Display:** 3-inch TFT color Display
- **Fingerprint Capacity:** 3,000
- **ID Card Capacity:** 10,000 (Optional)
- **Logs Capacity:** 100,000
- **Sensor:** BioID Sensor
- **Memory:** 128MB RAM/256MB Flash
- **Communication:** TCP/IP, USB, Wi-Fi
- **Standard Functions:** Automatic Status Switch, Self-Service Query, Work Code, T9 Input, 9 Digit User ID, DST, Scheduled Bell and SMS, Battery, Wi-Fi
- **IN05:** Time attendance without access
- **IN05-A:** Advance access, Exit Button, Door Lock, Alarm, 12V OUT, AUX IN, Door Sensor, RS485, Wiegand IN/OUT
- **Optional Functions:** ID Card, Mifare Card PoE, 3G, Battery Module
- **Power Supply:** 12V 1.5A
- **Operating Temperature:** 0°C - 45°C
- **Operating Humidity:** 20%-80%
- **Dimensions:** 179.95\*134.94\*38.5mm



Model	D1	D2
Display	2.8-Inch TFT Color Screen	
Fingerprint Capacity	1,000	
Sensor	BioID sensor	
Logs capacity	50,000	
Communication	USB Host, Wi-Fi(WLAN/Hot spot)	
Standard Functions	DST, Self Service Query, 9 Digit User ID, Automatic Status Switch, Scheduled Bell, T9 Input, SSR Report Built-in battery	
Optional Functions	APP: TA Assistant	
Power Supply	5V 2A	
Operating Environment	0 °C- 45 °C; 20%-80%	

## ↳ iClock Series



iClock Series are a 3.5-inch TFT screen Time Attendance Terminals. Adopting an user-friendly firmware and the latest core-board, it improves performance, accelerates identification speed and possesses higher extendibility for various customization requirement. What's more, the user-friendly interface gives you a new experience.

Most of them are equipped with standard functions like TCP/IP, USB-host, camera, T9 input, and backup battery. They also have access control interfaces for Wiegand In, Wiegand Out, Door lock, alarm and doorbell.

## ↳ Palm & Fingerprint / Face Recognition

### »» P160



- **Display:** 2.8-inch TFT color Display
- **Palm Capacity:** 600
- **Fingerprint Capacity:** 3,000
- **ID Card Capacity:** 10,000 (Optional)
- **Logs Capacity:** 100,000
- **Sensor:** BioID Sensor
- **Communication:** TCP/IP, USB, Wi-Fi
- **AC module 1:** Exit Button, Door Lock, Alarm, 12V OUT, AUX IN;
- **AC module 2:** Exit Button, Door Lock, Alarm, 12V OUT, AUX IN, Door Sensor, RS485, Wiegand IN/OUT. PoE, 3G, Battery Module

### »» P200/P260

- **Display:** 3-inch TFT color Display
- **Palm Capacity:** 600
- **Fingerprint Capacity:** 3,000
- **ID Card Capacity:** 10,000 (Optional)
- **Logs Capacity:** 100,000
- **Sensor:** BioID Sensor
- **Communication:** TCP/IP, USB, Wi-Fi
- **P200:** Time attendance without access
- **P260:** Advance access, Exit Button, Door Lock, Alarm, 12V OUT, AUX IN, Door Sensor, RS485, Wiegand IN/OUT



### »» PFace202

Multi-Biometric T&A and Access Control Terminal



- **Display:** 4.3-Inch Touch Screen
- **Palm Capacity:** 600
- **Fingerprint Capacity:** 2,000
- **Face Capacity:** 1,200 (1:N) / 3,000 (1:1)
- **ID Card Capacity:** 10,000 (optional)
- **Communication:** TCP/IP, USB-host, Wi-Fi (optional)
- **Interfaces:** Exit Button, Door Lock, Alarm, Door Sensor
- **Wiegand:** Out
- **Optional functions:** MF, 3G, ADMS, Backup Battery





## »» VF380



- **Display:** 3-inch Touch Screen
- **Face Capacity:** 1,200
- **ID Card Capacity:** 10,000
- **Logs Capacity:** 100,000
- **Communication:** TCP/IP, USB-host
- **Optional functions:** Mifare, WiFi

## »» uFace Series

- **Display:** 4.3-inch Touch Screen
- **Face Capacity:** 1,200 (1:N)
- **Fingerprint Capacity:** 2,000
- **ID Card Capacity:** 10,000 (Optional)
- **Logs Capacity:** 100,000
- **Communication:** TCP/IP, RS232/485, USB-host
- **Interfaces:** Exit Button, Door Lock, Alarm, Door Sensor, Wiegand OUT
- **Optional Functions:** ID/Mifare, WiFi, 3G, ADMS, 2000 mAh backup battery



## »» SilkBio-101TC

SilkID Slim Design Hybrid Biometric Multifunctional Terminal



- **Display:** 2.8-inch TFT color Display
- **Face Capacity:** 800
- **Fingerprint Capacity:** 1,500
- **ID Card Capacity:** 2,000 (Optional)
- **Logs Capacity:** 100,000
- **Communication:** TCP/IP, USB-host
- **Optional Functions:** ID/Mifare, WDMS
- **Interfaces:** Exit Button, Door Lock, Alarm, Door Sensor, RS232/485



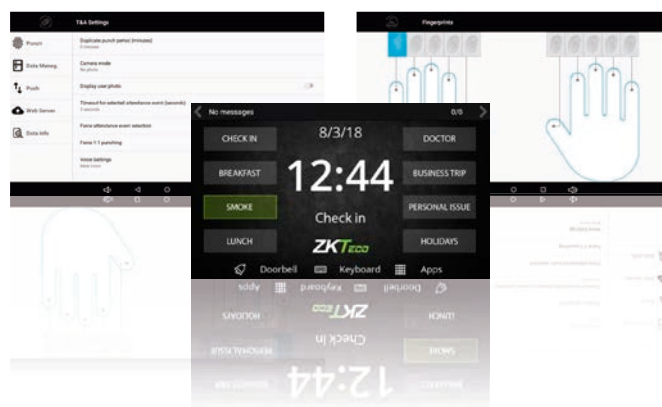
## » Data Collection Terminals

ZKTeco's multi-functional data collection terminals, with Android platform, offers fingerprint sensor and capacitive touch screen display, and added features such as Wi-Fi and internal battery. Available with a complete middleware solution, these terminals not only focus on time management, but due to its Android Operating System, they can help you develop infinite types of applications in a comfortable and intuitive way, with the possibility to develop different solutions for a wide range of sectors in the vertical market.

- Job Costing
- Conference Management
- VIP identification
- Time Management
- Fidelity Systems
- Warehouse management
- Canteen management
- Exhibitions Visitor management

### » ZPad Plus

Flexible Data Collection terminal with Android OS



### » HB510

Mobile Data Collection terminal



	ZPad Plus	HB510
Operating System	Android	
Capacitive Touch Screen	7 inch	5 inch
Hardware options	Fingerprint / RFID	
Power Supply	Built-in Battery	
Attendance Camera	YES	
Communication	TCP/IP, Wi-Fi, USB-Host, SD Card Slot	Wi-Fi, GPRS, Bluetooth, SD Card Slot

## Plug & Play Time Attendance Solution

**BioTime Web is the most innovative and simple 'Plug & Play' solution for employee time management, specially designed for small and medium business.**

The solution is based on ZKTeco's **Biopad** with an incorporated T&A application for the configuration and management of employees and their working schedules.

The uniqueness of the solution is that the Biopad comes with an integrated **Webserver**, an online time management application capable of managing all terminal data in real time through a web browser, allowing you to visualize and manage your employees' schedules from anywhere without the need of any added software.



Id	Name	Last Name	Attendance Event	Date
23	John	Smith	✓	2011/02/16 08:03:06
48	Shane	Williams	✓	2011/02/16 08:07:13
40	Chris	Mendez	✓	2011/02/16 08:05:18
3	Mehmet	Kaya	✓	2011/02/16 08:14:02
16	Don	Johnson	✓	2011/02/16 08:03:26
7	Robert	Sanchez	✓	2011/02/16 13:33:19
22	Ronald	Parsons	✓	2011/02/16 14:05:12
17	Ernesto	Alonso	✓	2011/02/16 14:06:02
6	Sofiam	Bas	✓	2011/02/16 14:36:47
16	Andrew	Munty	✓	2011/02/16 16:53:05
47	Rui	Ryan	✓	2011/02/16 17:46:19
52	Damon	Wu	✓	2011/02/16 18:02:38

### Real-Time Monitoring

The system provides all log information in real-time so you can check the latest actions of each user thanks to its intuitive interface

Id	Name	Last Name	Date	Checked Point	Status	View Detail
23	John	Smith	2011/02/16 08:03:06	101	P	▶
48	Shane	Williams	2011/02/16 08:07:13	101	P	▶
40	Chris	Mendez	2011/02/16 08:05:18	101	P	▶
3	Mehmet	Kaya	2011/02/16 08:14:02	101	P	▶
16	Don	Johnson	2011/02/16 08:03:26	101	P	▶
7	Robert	Sanchez	2011/02/16 13:33:19	101	P	▶
22	Ronald	Parsons	2011/02/16 14:05:12	101	P	▶
17	Ernesto	Alonso	2011/02/16 14:06:02	101	P	▶
6	Sofiam	Bas	2011/02/16 14:36:47	101	P	▶
16	Andrew	Munty	2011/02/16 16:53:05	101	P	▶
47	Rui	Ryan	2011/02/16 17:46:19	101	P	▶
52	Damon	Wu	2011/02/16 18:02:38	101	P	▶

### Attendance Reports

BioTime Web includes a flexible timetable feature, the reports of which can be exported, organized by day, week or month.

# Management Software

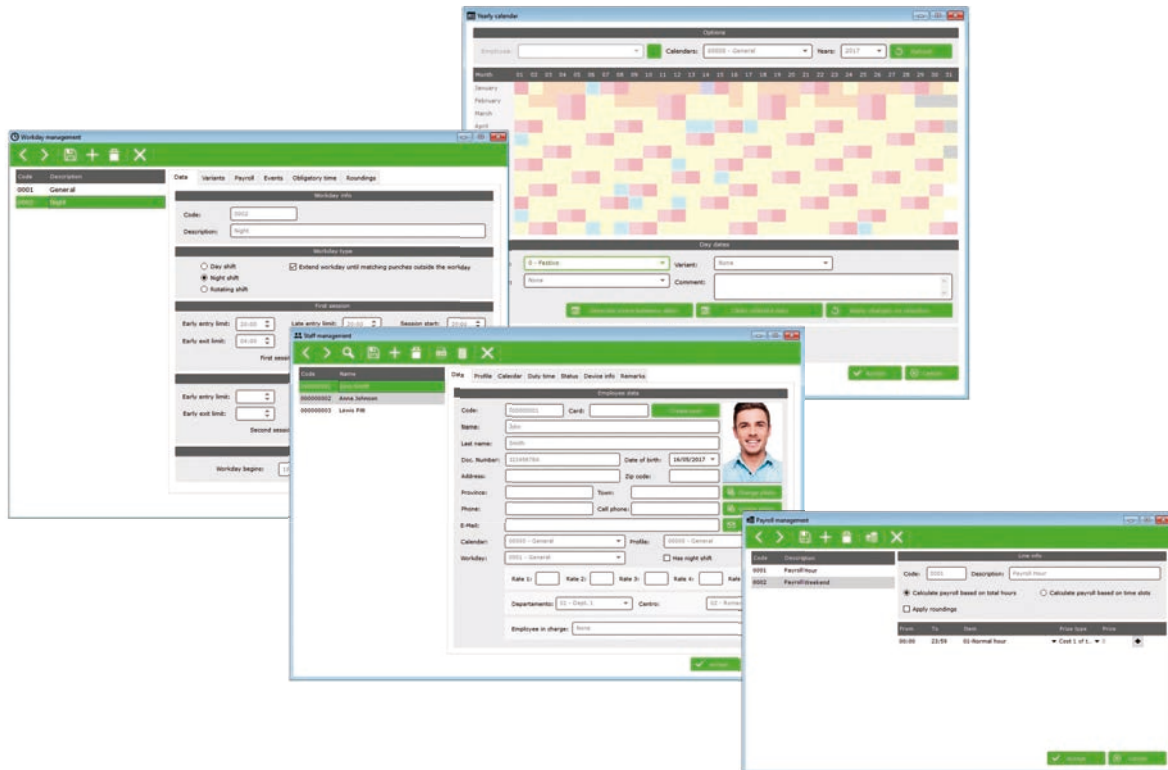


## ZKTime Enterprise Advanced Time & Attendance Software

ZKTime Enterprise is an advanced T&A application for ZKTeco terminals that allows to manage all In/Out attendance and access records, controlling all kind of accrued balance, payroll methods and attendance events (breakfast, lunch, medical, personal business, smoke etc.), .

Therefore, it includes an access control module, where you can define different access time slots and days for each employee. It can operate together with Atalaya-2, ZKTeco's web staff portal.

# ZKTime Enterprise Features



## Data and Access

Works with MySQL, MS SQL and Oracle. Allows multi-company and multi-user.

## Staff

Includes private calendar and profile (round hours, interruptions, payroll, etc..) as well as flexible work timetables. It can store fingerprints and faces of employees for recognition in biometric terminals. Imports employees from CSV.

## Work Shifts / Timetables

Supports both diurnal, nightly, rotating and flexible shifts. Allows evaluations of payroll per shift, mandatory attendance times, periods of validity of events and support for workdays over 24 hours. It is possible create estimated or fixed shift schedules.

## Calendars

Public calendars can be defined and then customized for each employee. Supports days with hourly variations or events (vacation, leave, travel, etc.).

## Payroll

Allows you to define the preferred payroll method, whether per number of hours in one day, or established time frames. Manages different payroll concepts such as regular hours, overtime, extra holidays, and so on. Payroll can compensate according to a predetermined amount of time or employee duty time.

## Accrued Balance

For each attendance event received, even work event, it allows to define multiple accrued balance types setting the different operations (add/deduct time, increase/decrease times, etc..) hereby controlling the total accrued balance, and setting the permitted value limits.

# ZKTime.net 3.0

## Perfect CS Time Attendance Software for SME

### Features

- One Click Sync System
- Profound "Terminal Zone" Management System
- Auto Email Notification
- 20+ Time Attendance Report
- User Friendly UI



Templates	Fingerprint / RFID / Face / Palm
Devices	Time Attendance Units, Access Control Devices with ZK Standard SDK.
Networking	TCP / IP / P2P / USB
Supported OS	Windows XP/ Vista/ 7/8/10 32 & 64Bit
Database	SQLite(default) / SQL Server / PostgreSQL / MySQL Etc.
Max Capacity	2000 Users, 50 Devices
Multi-Languages	English/ Traditional Chinese/ Arabic / Spanish / French/ Japanese/ Russian/ Turkish/ Vietnamese

# ZKTime Small Business

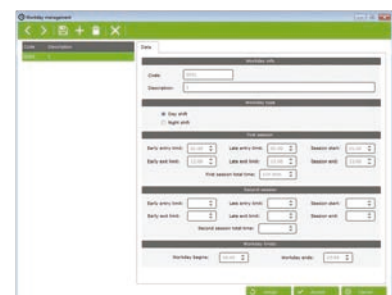
## Professional Time Attendance Software

### Features

- Avoids manual work from payroll process
- Attendance Calculation & Reports
- Supports up to 100 different events
- Multi-language
- Supports SQL Server, MySQL and Oracle databases



Supported OS	Windows XP/2000 or higher version
Hard disk Capacity	100MB free space
Monitor Resolution	1152 x 864 px
Database	MySQL, SQL Server and Oracle
Other	Pre-requisites included in the CD. Allows multi-company

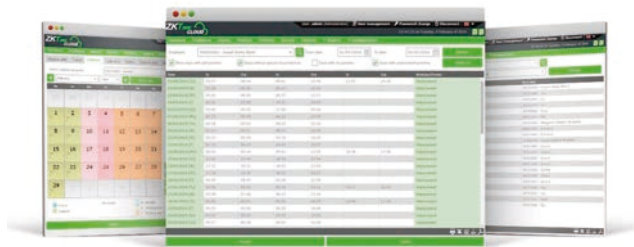


# ZKTime Cloud

## Cloud based Time Management Solution

ZKTime Cloud is a Cloud-Based software designed to manage enterprise employee time attendance. It integrates a web staff application through which employees or managers can view and print punches, credit hours, payroll, etc. Allows making petition or changes on your calendar, punches, vacation, personal data, etc. as well.

All this through the web browser, without requiring any previous software application.



# BioTime 7

## Web-Based Time Management Software

BioTime 7.0 is a powerful web-based time attendance software which offers the most innovative features a time attendance software can offer.

It provides a stable communication for devices through LAN/WAN/Wi-Fi/GPRS/3G. Users can access to the software anywhere by their web browser to remotely manage thousands of T&A terminals under complex network (WLAN).









## Access Control

ZKTeco's Access Control Product line is comprised of IP based standalone access control device, networked access control panel, readers and guard patrol and accessories with network based one-stop access control and T&A software. Thus, ZKTeco provides one-stop R&D and manufacturing services for business partners.

## ↳ Fingerprint Identification Terminals

### »» F22

NEW!

#### Ultrathin Fingerprint Access Control & Time Attendance terminal

- Wi-Fi Communication
- Reduced size
- BioID Sensor

**Display:** 2.8-inch TFT color Display

**Fingerprint Capacity:** 3,000 (1:N)

**ID Card Capacity:** 5,000 (Optional)

**Sensor:** BioID Sensor / Silk ID Sensor

**Communication:** RS485, TCP/IP, USB-host, Wi-Fi

**Dimensions:** 159,8 x 80,7 x 19,4



F22 is one of the smallest Access Control terminals on the market. With 16 cm high by 8 wide, the F22 is the perfect solution for installations of maximum exigency in confined spaces.

With a minimalist design in white or black colors, the F22 incorporates the new BioID algorithm that offers superior performance in fingerprint identification. It has Wi-Fi wireless communication as well as access control interfaces for connecting external readers, offering full connectivity in any environment. F22 arrives where no one arrives.



### »» F21

#### Fingerprint Time Attendance and Access Control terminal

Fingerprint Capacity	3,000 (1:N)
Card Capacity (Optional)	5,000
Communication	RS485, TCP/IP, USB -Host, RS232
Standard Functions	Access control interface for electric lock, door sensor, exit button, alarm, doorbell.
Wiegand Signal	Input and Output, SRB Support
Dimension	205mmx86mmx45mm

## »» SF420

### IP Based Fingerprint Access Control & Time Attendance

SF420 is an IP based fingerprint terminals with 1,500 fingerprint capacity, which operate in both network mode and standalone mode. It can connect with ZKAccess3.5 software for access control and time attendance management.



Fingerprint Capacity	1,500 (1:N)
Card Capacity(Optional)	5,000
RF Card	EM/Mifare
Record Capacity	80,000
Display	2.8 inch resistive touch screen
Communication	TCP/IP, RS485, USB Host
Standard Functions	Access control interface for electric lock, door sensor, exit button, alarm, doorbell.
Wiegand Signal	Input and Output
Dimension	105 × 105 × 32mm

## »» X8s

### Simple Fingerprint&RFID Card Access Control Terminal

Simple access control terminal with fingerprint and RFID card, touch keypad.

Fingerprint Capacity	500 (1:N)
Card Capacity	500 Cards
RF Card	EM(standard)/Mifare(optional)
Communication	None
Standard Functions	Access control interface for electric lock, door sensor, exit button, alarm, doorbell.
Dimension	90 × 90 × 32 mm



## Outdoor Fingerprint Identification Terminals

In a continuously expanding security environment, ZKTeco offers state of the art waterproof, antivandalic access control terminals.

The range features infrared fingerprint sensors, proximity and PIN ID, external door relays, voice prompt etc...ZKTeco's outdoor terminals allow complete integration in a buildings access control network.

### TF1600



IP65 Waterproof	Casing	IP65 Waterproof
Pull SDK	Communication Protocol	Standalone SDK
3.000	Fingerprint Capacity	3.000
30.000	Card Capacity	10.000
10.000	Log Capacity	50.000
TCP/IP, RS485	Communication	TCP/IP, RS485, USB-host
Input and Output	Wiegand	Input and Output
Electric Lock, Door Sensor, Exit Button, Alarm	Access Control Interface	Electric Lock, Door Sensor, Exit Button, Alarm, Door Bell
Low temperature sensor	Special features	Optional 8000 FP (Pull SDK)

### TF1700



### MA500



IP65 Waterproof Metal	Casing	IP65 Waterproof Metal
Pull SDK	Communication Protocol	Standalone SDK
3.000	Fingerprint Capacity	1.500
30.000	Card Capacity	10.000
100.000	Log Capacity	100.000
TCP/IP, RS485	Communication	TCP/IP, RS485, USB-host
Output	Wiegand	Input and Output
Electric Lock, Door Sensor, Exit Button, Alarm	Access Control Interface	Electric Lock, Door Sensor, Exit Button, Alarm

### MA300



## RFID Identification Terminals

### SC700

#### TFT RFID Access Control terminal

Display	3" TFT Touch Screen
Card Capacity	30,000
Communication	TCP/IP, USB-Host
Standard Functions	Access control interface for electric lock, door sensor, exit button, alarm.
Wiegand Signal	Input and Output



### SCR100

#### RFID Access Control terminal

Card Capacity	30.000 Cards
RF Card	EM(standard)/Mifare(optional)
Communication	TCP/IP, RS485/232, USB-host
Wiegand	Input and Output
Standard Functions	Access control interface for electric lock, door sensor, exit button, alarm

### DF Series

#### RFID Access Control keypads

Case	Metal Casing with IP65
Card Capacity	1.000 Cards
RF Card	EM(standard)/Mifare(optional)
Password Capacity	1.000
Standard Functions	Access control interface for electric lock, door sensor, exit button, alarm, doorbell.



# ZKBioBT

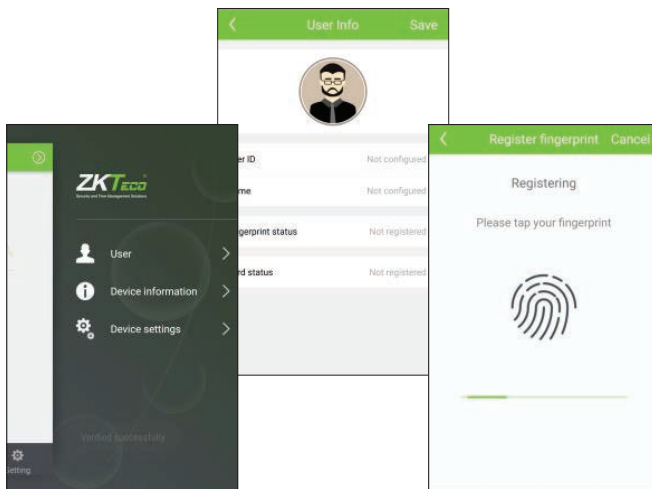
## Newest Bluetooth Access Control APPS

### Mobile Apps for you to wirelessly manage your doors



#### Mobile phone requirement for APP installation:

Android OS later than version 4.3, compliant with the Bluetooth protocol later than 4.0; iOS later than 7.1, devices later than iPhone 4S

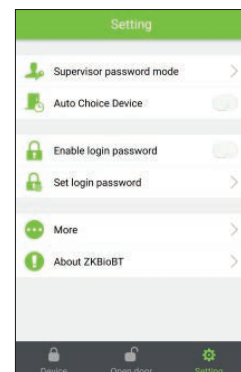


#### Remote User Registration

Easy User Registration though Bluetooth Connection

#### Wireless Door Setting

Both Open Time and Door Sensor, can seamlessly control in your hands



#### View Device information

Easily check out all the devices' basic information, such as available storage and usage information.



## MA300-BT

### Newest Bluetooth Access Control Terminal

Waterproof, Metallic Casing & ZKBioBT Apps Ready



Fingerprint Capacity	1,500 templates
ID Card Capacity	10,000
Transaction Capacity	10,000
Communication	Rs485, TCP/IP, USB-host, bluetooth
Access Control Interfaces for	3rd part electric lock, door sensor, exit button, alarm
Wiegand Signal	Input & Output
Standard Access Control	RS485 Reader, TimeZone, Group
Function	Multi-identification Duress mode, Anti-passback
Optional Function	Mifare, external USB keypad
Protection Grade	IP65
Dimensions(W x H x D)	73 x 148 x 34.5mm



## X8-BT

### Newest Bluetooth Access Control Terminal

Compact Size, Economic, ZKBioBT Apps Ready



Fingerprint Capacity	500 templates
ID Card Capacity	500
Sensor	SilkID Sensor
Communication	Bluetooth
Access Control	3rd part electric lock, door sensor
interface	Exit Button, Alarm, Door Bell
Standard Function	Simple access control Function, ID card
Optional Function	Mifare Card
Software	ZKBioBT APP
Dimensions(W x H x D)	101.5 x 101.5 x 37mm



## Multi-Biometric Identification Terminals

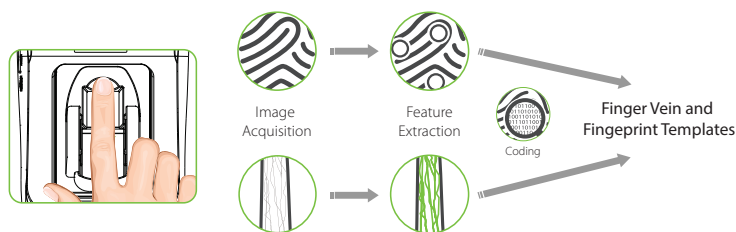
### FV350

#### Multimodal Finger Vein and Fingerprint Technology for Higher Security

With our independent patent finger vein recognition technology, FV350 has fast and high-accuracy and comfortable operability. Multimodal Finger Vein and Fingerprint technology achieve higher security.



Press the finger on the sensor → Capture both fingerprint and finger vein images → Get the unique points and generate templates → Compare that templates with the data which in device's database → Show the result on the device screen.



Finger Vein Capacity	1,000 (1:N)
Fingerprint Capacity	1,000 (1:N)
Card Capacity(Optional)	2,000 (EM/Mifare)
Record Capacity	100,000
Display	2.8 inch capacitive screen
Communication	RS232/485, TCP/IP,USB -Host
Standard Functions	Access control interface for electric lock, door sensor, exit button, alarm, doorbell.
Wiegand Signal	Input and Output
Auxiliary Interface	1ea input for linkage function
Power Supply	DC12V 3A
Operating Temp.	-10 °C- 45 °C
Operating Humidity	20%-80%
Dimension	232mm×91mm×117mm
SDK	Pull SDK

#### Part Numbers

FV350-ID: with RFID card reader

FV350-M: with Mifare card reader



## MultiBio 800

### Multi-biometric Access Control and Time Attendance Terminal

MultiBio 800 with Face, Fingerprint recognition and optional with RFID mode is applicable to high level access control application.



	MultiBio 800	MultiBio 800-H
Face Capacity	400 (1:N)	1500 (1:N)/4000(1:1)
Fingerprint Capacity	1000 (1:N)	4000 (1:N)
Card Capacity (Optional)	1,000	10,000
Record Capacity	100,000	
Display	2.8 inch TFT screen	
Communication	RS485, TCP/IP, USB -Host	
Standard Functions	Access control interface for electric lock, door sensor, exit button, alarm, doorbell.	
Wiegand Signal	Input and Output	
Auxiliary terminal:	1 ea input for linkage function	
Power Supply	DC12V 3A	
Operating Temp.	0 °C- 45 °C	
Operating Humidity	20%-80%	
Dimension	187.87mm×87.7mm×62.51mm	
SDK	Standalone SDK	

## »» PA10

### Palm and Fingerprint Access Control & Time Attendance terminal

- **Display:** 2.4-inch TFT LCD Color Screen
- **Palm Capacity:** 800
- **Fingerprint Capacity:** 3,000
- **Card Capacity (Optional):** 3,000 (ID/MF/HID Proximity card)
- **Logs Capacity:** 150,000
- **Sensor:** BioID Sensor
- **Optional Functions:** Printer, ADMS, PoE
- **Power Supply:** 12V 3A
- **Operating Environment:** -10 °C- 50 °C; 20%-80%
- **Dimensions:** 246.5 x93.0 x 51.1mm (L\*W\*T)
- **Communication:** RS485, TCP/IP, USB-host, Wi-fi (Optional)
- **Access Control Interface:** 3rd Party Electric Lock, Door Sensor, Exit Button, Alarm, Doorbell
- **Standard Functions:** DST, Automatic Status Switch, Anti-passback, Scheduled-Bell, External FP Reader




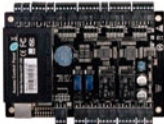
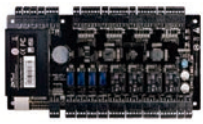
PA10 is a time attendance and access control terminal with Palm & Fingerprint Hybrid Biometrics. The Palm verification includes Palm Print & Palm Vein, so it not only is touchless, but also supports antispoof function.

The BioID sensor possesses outstandingly high identification rate towards dry, wet and rough fingers. TCP/IP, RS485, PoE (optional) and Wi-fi (optional) are also available which enable PA10 to be applied in different networks and various situations.

## Access Control Panels

Centralized administration and web-based infrastructures reduce a company's IT costs and allows an easy management of all access points from one single location. For this purpose, ZKTeco offers a whole range of access control panels, that can manage from 1 to 4 doors using either or both proximity and fingerprint identification.

## RFID Access Controllers

	C3-100	C3-200	C3-400
			
Card Capacity:	30.000	30.000	30.000
Event Capacity:	100.000	100.000	100.000
Communication:	TCP/IP, RS485	TCP/IP, RS485	TCP/IP, RS485
Wiegand Input:	2ea	4ea	4ea
Aux.output:	1ea	2ea	4ea
Aux.input:	none	2ea	4ea

## RFID & Fingerprint Access Controllers

	inBIO160	inBIO260	inBIO460
			
Card Capacity:	30.000	30.000	30.000
Fingerprint Capacity:	3.000 (optional 20.000)	3.000 (optional 20.000)	3.000 (optional 20.000)
Event Capacity:	100.000	100.000	100.000
Communication:	TCP/IP, RS485	TCP/IP, RS485	TCP/IP, RS485
Wiegand Input:	2ea	4ea	4ea
Aux.output:	1ea	2ea	4ea
Aux.input:	1ea	2ea	4ea
Aux:	RS485 for Fingerprint Reader	RS485 for Fingerprint Reader	RS485 for Fingerprint Reader

**NEW**

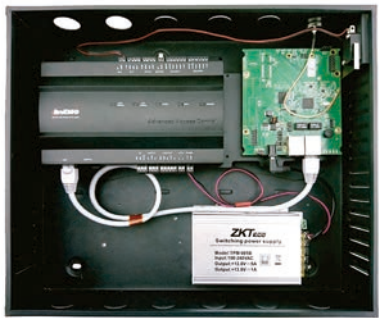
# InBio & C3 Wifi Bundle

Newest Wifi Biometric Access Control Panel  
Perfect Choice for Old Building Renovation



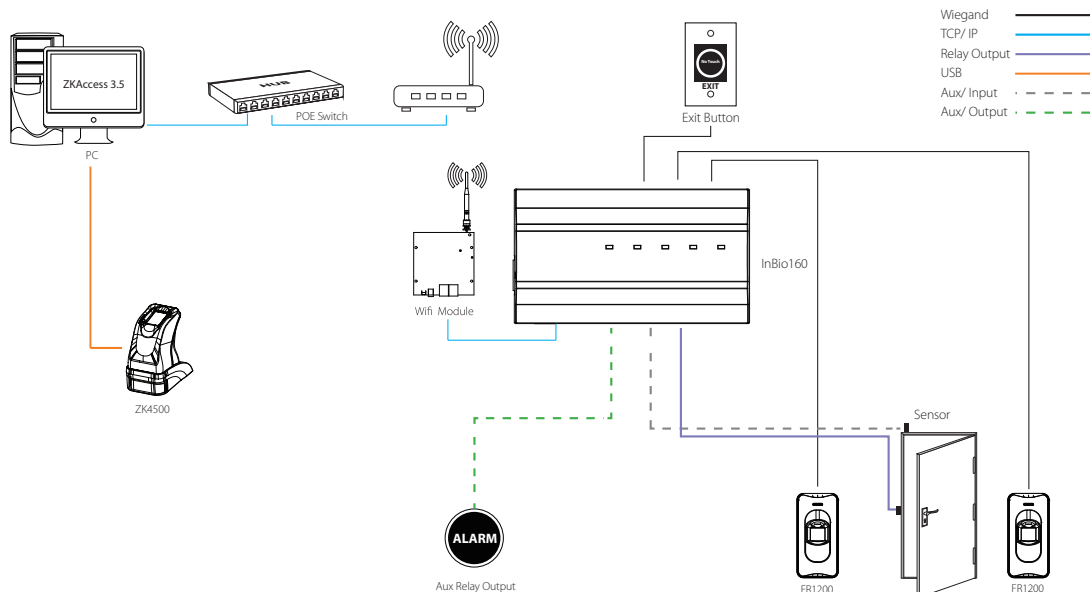
C3 Wifi Bundle Specification

	C3-100-WF	C3-200-WF	C3-400-WF
Number of Doors Controlled	1 Door	2 Door	4 Door
Number of Readers Supported	2	4	4
Wifi Module	Y	Y	Y
Types of Readers Supported	26-bit Wiegand, other upon request	26-bit Wiegand, other upon request	26-bit Wiegand, other upon request
Number of Inputs	2 (Exit Device and Door Status)	6 (2 Exit Device and 2 Door Status, 2 AUX))	12 (4 Exit Device and 4 Door Status, 4 AUX))
Number of Outputs	2 (1-Form C Relay for Lock and 1-Form C Relay for Aux Output)	4 (2-Form C Relay for Lock and 2-Form C Relay for Aux Output)	8 (4-Form C Relay for Lock and 4-Form C Relay for Aux Output)
Card Holders Capacity	30,000	30,000	30,000
Log Events Capacity	100,000	100,000	100,000
Communication	TCP/IP and RS-485	TCP/IP and RS-485	TCP/IP and RS-485



InBio Wifi Bundle Specification

	InBio-160-WF	InBio-260-WF	InBio-460-WF
Number of Doors Controlled	1 Door	2 Door	4 Door
Number of Readers Supported	4 (2 RS-485 Reader, 2 26-bit wiegand reader)	8 (4 RS-485 Reader, 4 26-bit wiegand reader)	12 (8 RS-485 Reader, 4 26-bit wiegand reader)
Wifi Module	Y	Y	Y
Types of Readers Supported	26-bit Wiegand and RS485 FR Series Reader	26-bit Wiegand and RS485 FR Series Reader	26-bit Wiegand and RS485 FR Series Reader
Number of Inputs	3 (Exit Device and Door Status, 1 AUX))	6 (2 Exit Device and 2 Door Status, 2 AUX))	12 (4 Exit Device and 4 Door Status, 4 AUX))
Number of Outputs	2 (1-From C Relay for Lock and 1-Form C Relay for Aux Output)	4 (2-From C Relay for Lock and 2-Form C Relay for Aux Output)	8 (4-From C Relay for Lock and 4-Form C Relay for Aux Output)
Card Holders Capacity	30,000	30,000	30,000
Fingerprint Capacity	3,000 (optional 20,000)	3,000 (optional 20,000)	3,000 (optional 20,000)
Log Events Capacity	100,000	100,000	100,000
Communication	TCP/IP and RS-485	TCP/IP and RS-485	TCP/IP and RS-485



**NEW**

# InBio & C3 POE Bundle

Newest POE Biometric Access Control Panel Effectively Cutting Cable Installation Cost



### C3-100-POE Specification

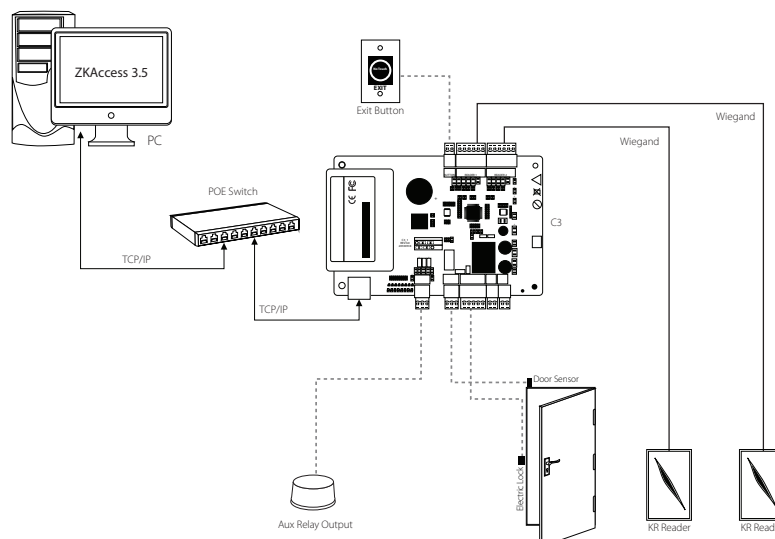
Number of Doors Controlled	1 Door
Number of Readers Supported	2
Aux. Output	1
Types of Readers Supported	26-bit Wiegand, other upon request
Number of Inputs	2 (Exit Device and Door Status)
Number of Outputs	2 (1-Form C Relay for Lock and 1-Form C Relay for Aux Output)
Weight	3.35kg
Dimensions (Bundle Only)	305.2mm x 298.4mm x 89mm
Dimensions (Board Only)	160mm x 106mm
User	30,000
Event Buffer	100,000 transactions
Communication	RS485, Ethernet
Nominal Voltage of C3-100	12v
Standby Current of C3-100	40mA
Operating Temp	0 °C - 45 °C
Operating Humidity	20% - 80%



### InBio-160-POE Specification

Number of Doors Controlled	1 Door
Number of Readers Supported	2
Aux. input	1
Aux. Output	1
Types of Readers Supported	26-bit Wiegand, other upon request
Number of Inputs	2 (Exit Device and Door Status)
Number of Outputs	2 (1-Form C Relay for Lock and 1-Form C Relay for Aux Output)
Weight	3.35kg
Dimensions (Bundle Only)	305.2mm x 298.4mm x 89mm
Dimensions (Board Only)	183mm x 106mm
User	30,000
Fingerprint	3,000
Event Buffer	100,000 transactions
Communication	RS485, Ethernet
Nominal Voltage of Inbio 160	12v
Standby Current of Inbio 160	50mA
Operating Temp	0 °C - 45 °C
Operating Humidity	20% - 80%

Wiegand ———  
 TCP/IP ———  
 Relay Output ———  
 Aux / Input - - -  
 Aux / Output - - -



## External Readers

ZKTeco's wide range of external readers include waterproof IP65 rated fingerprint, proximity and password ID models, which allow you to connect indoor terminals and controllers with an outdoor access feature, connecting these directly by Wiegand or RS485.

### Fingerprint Readers



#### FR1500

Embeddable Access Control reader

Case	Metal case. Waterproof Fingerprint cover (FR1500-WP)
Identification	Fingerprint
RF Card	125kHz Proximity card (Optional 13.56MHz Mifare)
Communication	RS485

#### FR1200

Waterproof Access Control reader

Case	IP65 Waterproof
Identification	Fingerprint
RF Card	125kHz Proximity card (Optional 13.56MHz Mifare)
Communication	RS485

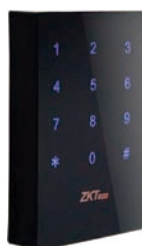


# RFID Readers

## KR610 Series



	KR610				KR611				KR612			
	E	E-RS	D	D-RS	E	E-RS	D	D-RS	E	E-RS	D	D-RS
<b>Proximity</b>	125 KHz		Mifare 13.56 MHz		EM 125 KHz		Mifare 13.56 MHz		EM 125 KHz		Mifare 13.56 MHz	
<b>Supported cards</b>	EM		Classic, DESFire, Plus, Ultralight, NFC. (only UID)	DESFire (UID and Encrypted Application Data)	EM		Classic, DESFire, Plus, Ultralight, NFC. (only UID)	DESFire (UID and Encrypted Application Data)	EM		Classic, DESFire, Plus, Ultralight, NFC. (only UID)	DESFire (UID and Encrypted Application Data)
<b>Read Range</b>	Up to 10 cm		Up to 5 cm		Up to 10 cm		Up to 5 cm		Up to 8 cm		Up to 4.5 cm	
<b>Reading Time</b>	≤300ms											
<b>Input Port</b>	External LED Control / External Buzzer Control											
<b>Material</b>	ABS+PC with texture											
<b>Output Format</b>	26/34 bits	26 bits	34/66 bits	Up to 66 bits	26/34 bits	26 bits	34/66 bits	Up to 66 bits	26/34 bits	26 bits	34/66 bits	Up to 66 bits
<b>Power/Current</b>	DC 6-14V / Max.70mA											
<b>LED</b>	Red and Green LEDs											
<b>Operating Temperature</b>	-20°C to 65°C(-10° to +70°C)											
<b>Operating Humidity</b>	10% to 90% relative humidity non-condensing											
<b>Beeper</b>	Yes											
<b>Index of Protection</b>	IP65								IP64			
<b>Dimensions</b>	75x116x16 mm				86x86x16 mm				86x86x20 mm			
<b>Cable length</b>	Standard 35 cm (Optional 150 cm)											



»» KR702E/M

- **Model:** KR702E/KR702M
- **Wiegand Signal:** Wiegand 26; Wiegand 34
- **Power Supply:** 12V DC, <90mA
- **Effective Distance:** 0~8cm (depending on working conditions and cards)
- **Read Time:** <80ms
- **Ingress Protection Rate:** IP65
- **Operating Frequency:** 125KHz/13.56MHz
- **Operating Temperature:** 0 °C- 70 °C
- **Operating Humidity:** 20%-80%
- **Dimension (LxWxH):** 113x75x16mm

## UHF Long Distance



### UHF Slave Readers

Ultra-long Reading distance reader

Model	UHF 1-5	UHF 2-5	UHF 1-10	UHF 2-10
Dimensions	260 X 260 X 65mm		445 x 445 x 70mm	
Reading distance	Up to 6 m (adjustable)		Up to 12 m (adjustable)	
Communication interface	Wiegand 26 (Default) / Wiegand 34, USB			
Frequency	902MHz-928MHz , 865MHz-868MHz			
Shell material	Die-casting aluminum shell, Antenna panel with engineering plastics			
Interface protocol	EPC global UHF Class 1Gen 2/ISO 18000-6c			
Multiple tags identification	>50			
Working mode	Always read (Default) / Trigger read			

### U1000/U2000

Ultra-long Reading distance Standalone terminals



U1000



U2000

- **Card Capacity:** 5,000 cards
- **Transactions:** 30,000
- **Hardware Platform:** ZMM220
- **Working Frequency:** F Series: 902Mhz-928MHz; E Series: 865MHz-868MHz
- **Reading Distance:** 0-6m (Stable is 0-5m)/ 0-12m (Stable is 0-10m)
- **Communication:** TCP/IP (connect access software) , USB (connect demo)
- **Access Control Interface:** 3rd Party Electric Lock, Door Sensor, Exit Button, Alarm, Wiegand In/Out

- **Access Control Functions:** Standard access functions, anti-passback
- **Antenna Gain:** 8dBi/12dBi
- **Output Power:** 18dBm-26dBm
- **Support Software:** ZKAccess3.5, ZKBioSecurity3.0
- **Power Supply:** DC12V, 3A
- **Working Temperature:** -20°C-+60°C
- **Working Humidity:** <95% (25°C )
- **Dimension:** 250mm\*250mm\*70mm(±5)/ 445mm\*445mm\*70mm (±5)



## Accessories-Cards and Tags



»» ID Card(thin)

- 125kHz Proximity Card
- Read only



»» ID Card (long range)

- 125kHz Proximity Card
- Read only
- Suitable for KR1000 for 60cm reading range



»» ID Card(thick)

- 125kHz Proximity Card
- Read only



»» Mifare Card(S50)

- 13.56Mhz Mifare One Card
- Standard MF1 S50(1 Kbyte) EEPROM



»» Mifare Card(S70)

- 13.56Mhz Mifare One Card
- Standard MF1 S70(4 Kbyte) EEPROM



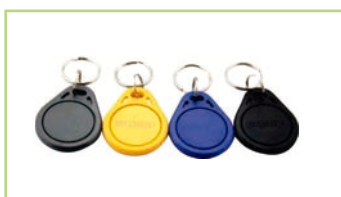
»» HID Card(thin)

- 125KHz HID proximity card



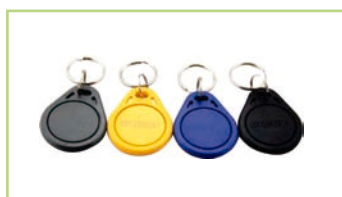
HID Card(thick)

- 125KHz HID proximity card



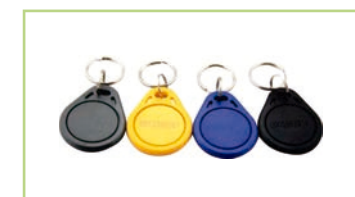
»» TAG-03(ID)(S50)

- 125KHz Proximity TAG



»» TAG-03(Mifare S50)

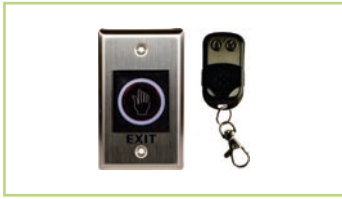
- 13.56MHz Proximity TAG



TAG-03(Mifare S70)

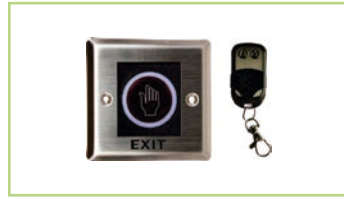
- 13.56MHz Proximity TAG

## Accessories-Exit Buttons



»» K2

- Non-touch Exit Sensor with Remote Key(Diffused Detection)
- NO NC COM relay output
- Size: 115Lx70W(mm)



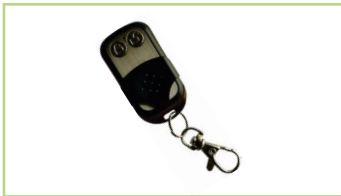
»» K2S

- Non-touch Exit Sensor with Remote Key(Diffused Detection)
- NO NC COM relay output
- Size: 86Lx86W(mm)



»» K1-1D

- Non-touch/Touch free Exit Sensor (Diffused Detection)
- NO NC COM relay output
- Size: 86Lx86W(mm)



»» Remote Key

- Remote control for K2/K2S



»» EX-800A

- Size: 800A: 86Lx50Wx20T(mm)



»» EX-800B

- Size: 800A: 86Lx86Wx20T(mm)



»» K1-1

- Non-touch/Touch free Exit Sensor (Diffused Detection)
- NO NC COM relay output
- Size: 115Lx70W(mm)



»» EX-802

- Size: 802: 86Lx86Wx20T(mm)



»» EX-801A

- Size: 801A: 91Lx28Wx20T(mm)



»» EX-801B

- Size: 800A: 86Lx86Wx20T(mm)

## Accessories-Box and Cover



### »» Metal Box

- Metal Box for C3 Series control panel, including key, cables, iron plate etc



### »» Metal Box

- Metal Box for inBIO Series control panel, including LED indicator, key, cables, iron plate etc.



### »» WP01

- Protective Cover for TF1700/TF1600

## Accessories-Power Supply



### »» PS901

- Power Supply without Battery Leads
- Input: 220V AC, 50Hz (110V optional)
- Output: 12V DC, 3A



### »» PS901B

- Power Supply with Battery Leads
- Input: 220V AC, 50Hz (110V optional)
- Output: 12V DC, 3A
- 12V 7Ah battery not included



### »» PS902

- Power Supply with Battery Leads
- Input: 220V AC, 50Hz (110V optional)
- Output: 12V DC, 3A



### »» PS902B

- Power Supply with Battery Leads
- Input: 220V AC, 50Hz (110V optional)
- Output: 12V DC, 3A
- 12V 7Ah battery not included



### »» Power Supply

- Plug to device: 90°,  $\phi$ 2.1mm
- Cable Length: 1.8m
- Output: 12V DC, 3A



### »» TPM005B

- Power Supply with Battery Leads
- Input: 220V AC, 50Hz (110V optional)
- Output: 12V DC, 3A



### »» TPM003B

- Spare parts for inBIO160 Package B
- Power supply for Controller with uninterrupted battery function
- Input: 110-240V AC, 50/60z
- Output: 13.8V/3A+1A



### »» ZKPSM030B

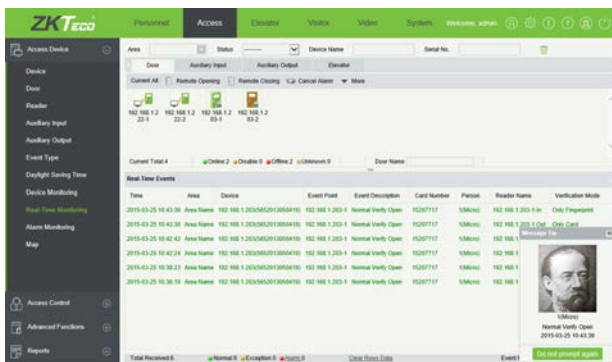
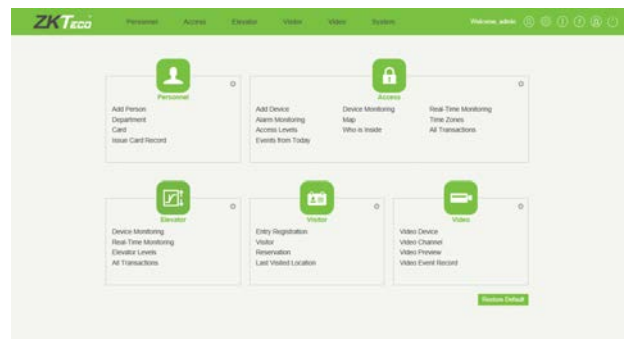
- Spare parts for C3-100/200/400 Package B
- Power supply for Controller with uninterrupted battery function
- Input: 110-240V AC, 50/60z
- Output: 13.7V/3.5A+1A

# Software Management

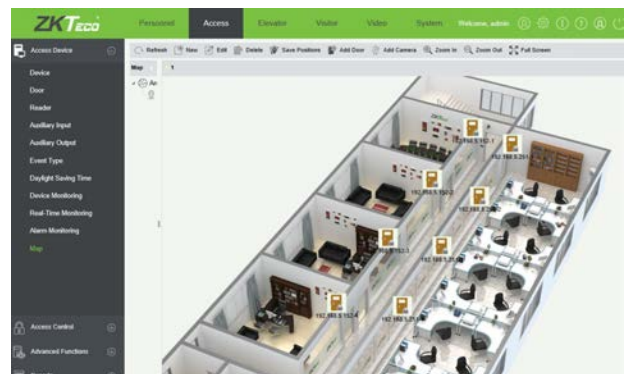
## New ZKAccess3.5 Software

Our ZKAccess 3.5 is an Access Control software application that offers complete flexibility in programming to achieve any access control performance your solution may require.

The ZKAccess system goes a step beyond conventional access control systems, by combining unique RFID and biometric identification. With its intuitive easy-to-use GUI and wizard type settings, ZKAccess provides comprehensive access control security for small-to-medium sized businesses and enterprise-level systems.



ZKAccess includes a time and attendance feature to allow administrator to define timetables, shifts, schedules, and holiday settings. It provides compact and easy-to-use report and In/Out board features.



The system controls up to 400 doors and allows integration with various database systems, event monitoring, interlock, linkage, passage mode, first-card opening, multi-card opening, visual map, T&A management and reporting features.

## Third Party software integration

ZKTeco can provide a free SDK with open libraries to be used with third party access control systems. In this way, the needs for software developers to merge different Access Control solutions in one complete and integrated solution are solved.

# Features and Applications



## Embedded Internal Biometric Identification:

The FR Series readers transmit fingerprint templates to inBIO via RS485 that matches fingerprints with templates stored in the database. Wiegand inputs are also provided for traditional RFID readers.



## Complete Access Control:

Apart from standard access control features for controlling door locks, easily programmable auxiliary relays can be used for additional control and interface to lights, alarms, intrusion detection panels, or even extra locking devices or gate controllers.



## Communication:

The access controllers can be easily integrated into your network and support both TCP/IP and RS-485 communication. The auto-discovery tool can manage the setting and modification of network parameters in a fast and efficient manner.



## Options:

Three different sizes of controllers can suit various project needs and reduce the cost of required floorspace. 1-way and 2-way models can be mixed and matched in optimized system architecture.



## Capacity:

The system supports up to 3000 fingerprint templates, 30,000 badge users and stores up to 100,000 events and transactions. Data is preserved if there is power outage. Controller can continue operating if network connection is interrupted.



## Built-in Advanced

### Access Control Functions:

Anti-passback, First-Card opening, Multi-Card opening, Duress Password Entry, and Auxiliary input/output linkages are built into controller firmware.



## Cost Efficient Management:

New controller features allows you to remotely upgrade firmware of systems out in the field, ensuring that you can manage and expand your investment value without any complex third party tools.



## For Software Developers:

Free SDK is available for integrators and OEMs (optional Push SDK for Real-Time environments) to integrate the controller with their own or existing security or personnel management applications. Upon demand, ZKTeco can customize firmware to meet any customer requirements.

## Applications



Building Entrance



Time & Attendance



Visitor Management



Sports and leisure facilities



Arena Entrance Events



Vehicle Access

# Entrance Control

Entrance control is the management of people. General management methods include access control system, parking management system and visitor management system using intelligent turnstiles. In different environments, different types of entrance control devices are required. For example, the tripod turnstiles and full height turnstiles are installed in public venues, and the flap barrier turnstiles are often installed in the private enterprises. ZKTeco commits to integrating biometrics into entrance control to provide more intelligent management solutions.





## ∨ Flap Barrier



### ProEntrance FB 01 RF/FP

- Power Requirements: AC 100~120V/200~240V, 50/60Hz
- Working Temperature: -28°C~60°C
- Working Humidity: 5%~80%
- Working Environment: Indoor/Outdoor (if sheltered)
- Throughput: 30 persons/min
- Lane Width(mm): 600
- Footprint(mm\*mm): 1150\*1200
- Dimension(mm): 1150\*570\*1000 (L\*W\*H)
- Cabinet Material: SUS304 Stainless Steel
- Barrier Material: Acrylic
- Barrier Movement: Retracting
- Emergency Mode: Y
- Security Level: Medium
- MCBF: 2 million
- Options/Accessories: Counter, Card Receiver Box, SUS316 Cabinet, Remote Control



### ProEntrance FB 02 RF/FP

- Power Requirements: AC 100~120V/200~240V, 50/60Hz
- Working Temperature: -28°C~60°C
- Working Humidity: 5%~80%
- Working Environment: Indoor/Outdoor (if sheltered)
- Throughput: 30 persons/min
- Lane Width(mm): 600
- Footprint(mm\*mm): 1150\*1200
- Dimension(mm): 1150\*570\*1000 (L\*W\*H)
- Cabinet Material: SUS304 Stainless Steel
- Barrier Material: Acrylic
- Barrier Movement: Retracting
- Emergency Mode: Y
- Security Level: Medium
- MCBF: 2 million
- Options/Accessories: Counter, Card Receiver Box, SUS316 Cabinet, Remote Control



## ↘ Swing Barrier



### ProEntrance SB 01 RF/FP

- Power Requirements: AC 100~120V/200~240V, 50/60Hz
- Working Temperature: -28°C~60°C
- Working Humidity: 5%~80%
- Working Environment: Indoor/Outdoor (if sheltered)
- Throughput: 30 persons/min
- Lane Width(mm): 1045
- Footprint(mm\*mm): 1530\*1560
- Dimension(mm): 1530\*753\*1000 (L\*W\*H)
- Cabinet Material: SUS304 Stainless Steel
- Barrier Material: SUS304 Stainless Steel
- Barrier Movement: Swing
- Emergency Mode: Y
- Security Level: Medium
- MCBF: 2 million
- Options/Accessories: Counter, Card Receiver Box, SUS316 Cabinet, Remote Control



### ProEntrance SB 02 RF/FP

- Power Requirements: AC 100~120V/200~240V, 50/60Hz
- Working Temperature: -28°C~60°C
- Working Humidity: 5%~80%
- Working Environment: Indoor/Outdoor (if sheltered)
- Throughput: 30 persons/min
- Lane Width(mm): 1045
- Footprint(mm\*mm): 1530\*1245
- Dimension(mm): 1150\*1245\*1000 (L\*W\*H)
- Cabinet Material: SUS304 Stainless Steel
- Barrier Material: SUS304 Stainless Steel
- Barrier Movement: Swing
- Emergency Mode: Y
- Security Level: Medium
- MCBF: 2 million
- Options/Accessories: Counter, Card Receiver Box, SUS316 Cabinet, Remote Control

## ↳ Tripod Turnstile

### ProEntrance TS 01 RF/FP



Model	TS01 RF	TS01 FP
Power Requirements	AC 100~120V/200~240V, 50/60Hz	
Working Temperature	-28°C~60°C	
Working Humidity	5%~80%	
Working Environment	Indoor/Outdoor (if sheltered)	
Throughput	30 persons/min	
Lane Width(mm)	500	
Footprint(mm*mm)	1200*760	
Dimension(mm)	1150*760*1000 (L*W*H)	
Dimension with Packing(mm)	1200*280*1100 (L*W*H)	
Cabinet Material	SUS304 Stainless Steel	
Barrier Material	SUS304 Stainless Steel	
Barrier Movement	Rotating	
Emergency Mode	Y	
Security Level	Medium	
MCBF	2 million	
Options/Accessories	Counter, Card Receiver Box, SUS316 Cabinet, Remote Control	

## TS1000/TS1011/TS1022



Model	TS1000	TS1011	TS1022
Power Supply	AC 220V/110V, 50/60Hz		
Operating Temperature	-28°C~60°C		
Operating Humidity	5%~80%		
Working Environment	Indoor/Outdoor (if sheltered)		
Rated Power	60W		
Flow Rate	25- 48 passage/minute		
Casework Material	SUS304		
Pictogram Indication	Yes		
Control System	Input controlled by dry contact		
Emergency Button Input	Yes		
Dimension	52×98×28(CM) + arm length 50CM		
Package Dimension	60×108×38(CM)		
Net Weight	34KG		
Gross Weight with Package	40KG		
Optional Function	Alternative material or shape, third-party access control integration, ticket system integration, passage counter		

## TS1200



- Power Requirements: AC 220V/110V, 50/60Hz
- Working Temperature: -28°C~60°C
- Working Humidity: 5%~85%
- Working Environment: Indoor/ Outdoor (if sheltered)
- Rated Power: 60W
- Flow Rate: 25- 48 passage/minute
- Casework Material: SUS304
- Pictogram Indication: Yes
- Control System: Input controlled by dry contact
- Emergency Button Input: Yes
- Dimension: 60×98×33(CM) + arm length 50CM
- Package Dimension: 73×108×45(CM) Net Weight: 55KG
- Gross Weight with Package: 63KG
- Options/Accessories: Alternative material or shape, third-party access control integration, ticket system integration, passage counter

## TS1211



- Power Requirements: AC 220V/110V, 50/60Hz
- Working Temperature: -28°C~60°C
- Working Humidity: 5%~85%
- Working Environment: Indoor/ Outdoor (if sheltered)
- Rated Power: 60W
- Flow Rate: 25- 48 passage/minute
- Casework Material: SUS304
- Pictogram Indication: Yes
- Control System: Input controlled by dry contact
- Emergency Button Input: Yes
- Dimension: 60×98×33(CM) + arm length 50CM
- Package Dimension: 73×108×45(CM) Net Weight: 55KG
- Gross Weight with Package: 63KG
- Options/Accessories: Alternative material or shape, third-party access control integration, ticket system integration, passage counter

## TS1222



- Power Requirements: AC 220V/110V, 50/60Hz
- Working Temperature: -28°C~60°C
- Working Humidity: 5%~85%
- Working Environment: Indoor/ Outdoor (if sheltered)
- Rated Power: 60W
- Flow Rate: 25- 48 passage/minute
- Casework Material: SUS304
- Pictogram Indication: Yes
- Control System: Input controlled by dry contact
- Emergency Button Input: Yes
- Dimension: 60×98×33(CM) + arm length 50CM
- Package Dimension: 73×108×45(CM) Net Weight: 55KG
- Gross Weight with Package: 63KG
- Options/Accessories: Alternative material or shape, third-party access control integration, ticket system integration, passage counter

## TS2000

- Power Requirements: AC 220V/110V, 50/60Hz
- Working Temperature: -28°C~60°C
- Working Humidity: 5%~85%
- Working Environment: Indoor/ Outdoor (if sheltered)
- Rated Power: 60W
- Flow Rate: 25- 48 passage/minute
- Casework Material: SUS304
- Pictogram Indication: Yes
- Control System: Input controlled by dry contact
- Emergency Button Input: Yes
- Dimension: 111×98×26(CM) + arm length 50CM
- Package Dimension: 120×108×38(CM)
- Net Weight: 46KG
- Gross Weight with Package: 54KG
- Options/Accessories: Alternative material or shape, third-party access control integration, ticket system integration, passage counter



## TS2011

- Power Requirements: AC 220V/110V, 50/60Hz
- Working Temperature: -28°C~60°C
- Working Humidity: 5%~85%
- Working Environment: Indoor/ Outdoor (if sheltered)
- Rated Power: 60W
- Flow Rate: 25- 48 passage/minute
- Casework Material: SUS304
- Pictogram Indication: Yes
- Control System: Input controlled by dry contact
- Emergency Button Input: Yes
- Dimension: 111×98×26(CM) + arm length 50CM
- Package Dimension: 120×108×38(CM)
- Net Weight: 46KG
- Gross Weight with Package: 54KG
- Options/Accessories: Alternative material or shape, third-party access control integration, ticket system integration, passage counter



## TS2022

- Power Requirements: AC 220V/110V, 50/60Hz
- Working Temperature: -28°C~60°C
- Working Humidity: 5%~85%
- Working Environment: Indoor/ Outdoor (if sheltered)
- Rated Power: 60W
- Flow Rate: 25- 48 passage/minute
- Casework Material: SUS304
- Pictogram Indication: Yes
- Control System: Input controlled by dry contact
- Emergency Button Input: Yes
- Dimension: 111×98×26(CM) + arm length 50CM
- Package Dimension: 120×108×38(CM)
- Net Weight: 46KG
- Gross Weight with Package: 54KG
- Options/Accessories: Alternative material or shape, third-party access control integration, ticket system integration, passage counter



## TS2033

- Power Requirements: AC 220V/110V, 50/60Hz
- Working Temperature: -28°C~60°C
- Working Humidity: 5%~85%
- Working Environment: Indoor/ Outdoor (if sheltered)
- Rated Power: 60W
- Flow Rate: 25- 48 passage/minute
- Casework Material: SUS304
- Pictogram Indication: Yes
- Control System: Input controlled by dry contact
- Emergency Button Input: Yes
- Dimension: 111×98×26(CM) + arm length 50CM
- Package Dimension: 120×108×38(CM)
- Net Weight: 46KG
- Gross Weight with Package: 54KG
- Options/Accessories: Alternative material or shape, third-party access control integration, ticket system integration, passage counter



## TS2100

- Power Requirements: AC 220V/110V, 50/60Hz
- Working Temperature: -28°C~60°C
- Working Humidity: 5%~85%
- Working Environment: Indoor/ Outdoor (if sheltered)
- Rated Power: 60W
- Flow Rate: 25- 48 passage/minute
- Casework Material: SUS304
- Pictogram Indication: Yes
- Control System: Input controlled by dry contact
- Emergency Button Input: Yes
- Dimension: 111×98×18(CM) + arm length 50CM
- Package Dimension: 120×108×28(CM)
- Net Weight: 45KG
- Gross Weight with Package: 53KG
- Options/Accessories: Alternative material or shape, third-party access control integration, ticket system integration, passage counter



## TS2111

- Power Requirements: AC 220V/110V, 50/60Hz
- Working Temperature: -28°C~60°C
- Working Humidity: 5%~85%
- Working Environment: Indoor/ Outdoor (if sheltered)
- Rated Power: 60W
- Flow Rate: 25- 48 passage/minute
- Casework Material: SUS304
- Pictogram Indication: Yes
- Control System: Input controlled by dry contact
- Emergency Button Input: Yes
- Dimension: 111×98×18(CM) + arm length 50CM
- Package Dimension: 120×108×28(CM)
- Net Weight: 45KG
- Gross Weight with Package: 53KG
- Options/Accessories: Alternative material or shape, third-party access control integration, ticket system integration, passage counter



## TS2122

- Power Requirements: AC 220V/110V, 50/60Hz
- Working Temperature: -28°C~60°C
- Working Humidity: 5%~85%
- Working Environment: Indoor/ Outdoor (if sheltered)
- Rated Power: 60W
- Flow Rate: 25- 48 passage/minute
- Casework Material: SUS304
- Pictogram Indication: Yes
- Control System: Input controlled by dry contact
- Emergency Button Input: Yes
- Dimension: 111×98×18(CM) + arm length 50CM
- Package Dimension: 120×108×28(CM)
- Net Weight: 45KG
- Gross Weight with Package: 53KG
- Options/Accessories: Alternative material or shape, third-party access control integration, ticket system integration, passage counter



## TS2133

- Power Requirements: AC 220V/110V, 50/60Hz
- Working Temperature: -28°C~60°C
- Working Humidity: 5%~85%
- Working Environment: Indoor/ Outdoor (if sheltered)
- Rated Power: 60W
- Flow Rate: 25- 48 passage/minute
- Casework Material: SUS304
- Pictogram Indication: Yes
- Control System: Input controlled by dry contact
- Emergency Button Input: Yes
- Dimension: 111×98×18(CM) + arm length 50CM
- Package Dimension: 120×108×28(CM)
- Net Weight: 45KG
- Gross Weight with Package: 53KG
- Options/Accessories: Alternative material or shape, third-party access control integration, ticket system integration, passage counter



## TS2200/TS2211/TS2222



Model	TS2200	TS2211	TS2222
Power Supply	AC 220V/110V, 50/60Hz		
Operating Temperature	-28°C~60°C		
Operating Humidity	5%~85%		
Working Environment	Indoor/Outdoor (if sheltered)		
Rated Power	120W		
Flow Rate	25- 48 passage/minute		
Casework Material	SUS304		
Pictogram Indication	Yes		
Control System	Input controlled by dry contact		
Emergency Button Input	Yes		
Dimension	111×98×32(CM) + arm length 50CM		
Package Dimension	120×108×44(CM)		
Net Weight	65KG		
Gross Weight with Package	75KG		
Optional Function	Alternative material or shape, third-party access control integration, ticket system integration, passage counter		



## TS5000A/TS5011A/TS5022A



Model	TS5000A	TS5011A	TS5022A
Power Requirements	AC 100 ~ 120V/200 ~ 240V, 50/60Hz		
Working Temperature	-28°C~60°C		
Working Humidity	5%~85%		
Working Environment	Indoor/Outdoor (if sheltered)		
Lane Width(mm)	500		
Footprint(mm*mm)	1200*750		
Dimension(mm)	1200*300*1010 (L*W*H)		
Dimension with Packing(mm)	1310*420*1100 (L*W*H)		
Net Weight(kg)	60		
Weight with Packing(kg)	90		
Cabinet Material	SUS304 Stainless Steel		
Lid Material	Tempered Glass		
Barrier Material	SUS304 Stainless Steel		
Barrier Movement	Rotating		
Emergency Mode	Y		
Security Level	Medium		
MCBF	2 million		
Options/Accessories	Counter, Card Receiver Box, SUS316 Cabinet and Lid, Remote Control		

## Swing Barrier Turnstile



### SBT1000S

- Power Requirements: AC 220V/110V, 50/60Hz
- Power Consumption(Starting): 82W
- Power Consumption(Standby): 29W
- Power Consumption(Unlock): 76W
- Working Temperature: -28°C~60°C
- Working Humidity: 5%~80%
- Working Environment: Indoor/ Outdoor (if sheltered)
- Lane Width(mm): 900
- Footprint(mm\*mm): 1030\*210
- Dimension(mm): 1030\*210\*1100(L\*W\*H)
- Dimension with Packing(mm): 280\*280\*1160(L\*W\*H)
- Net Weight(kg): 31
- Weight with Packing(kg): 38
- LED Indicator: Y
- Cabinet Material: SUS304 Stainless Steel
- Lid Material: SUS304 Stainless Steel
- Barrier Material: Tempered glass (stainless speed bar optional)
- Barrier Movement: Swing
- Emergency Mode: Y
- Security Level: Medium
- MCBF: 2 million

### SBT1011S

- Power Requirements: AC 220V/110V, 50/60Hz
- Power Consumption(Starting): 82W
- Power Consumption(Standby): 29W
- Power Consumption(Unlock): 76W
- Working Temperature: -28°C~60°C
- Working Humidity: 5%~80%
- Working Environment: Indoor/ Outdoor (if sheltered)
- Lane Width(mm): 900
- Footprint(mm\*mm): 1030\*210
- Dimension(mm): 1030\*210\*1100(L\*W\*H)
- Dimension with Packing(mm): 280\*280\*1160(L\*W\*H)
- Net Weight(kg): 31
- Weight with Packing(kg): 38
- LED Indicator: Y
- Cabinet Material: SUS304 Stainless Steel
- Lid Material: SUS304 Stainless Steel
- Barrier Material: Tempered glass (stainless speed bar optional)
- Barrier Movement: Swing
- Emergency Mode: Y
- Security Level: Medium
- MCBF: 2 million

### SBT1022S

- Power Requirements: AC 220V/110V, 50/60Hz
- Power Consumption(Starting): 82W
- Power Consumption(Standby): 29W
- Power Consumption(Unlock): 76W
- Working Temperature: -28°C~60°C
- Working Humidity: 5%~80%
- Working Environment: Indoor/ Outdoor (if sheltered)
- Lane Width(mm): 900
- Footprint(mm\*mm): 1030\*210
- Dimension(mm):1030\*210\* 1100(L\*W\*H)
- Dimension with Packing(mm): 280\*280\*1160(L\*W\*H)
- Net Weight(kg): 31
- Weight with Packing(kg): 38
- LED Indicator: Y
- Cabinet Material: SUS304 Stainless Steel
- Lid Material: SUS304 Stainless Steel
- Barrier Material: Tempered glass (stainless speed bar optional)
- Barrier Movement: Swing
- Emergency Mode: Y
- Security Level: Medium
- MCBF: 2 million



**SBTL2000/SBTL2011**



**SBTL2022**

**SBTL2000**

Power Requirements	AC110V/220V, 50/60HZ	Weight with Packing(kg)	160
Working Temperature	-28 °C~60 °C	LED Indicator	Y
Working Humidity	5%~80%	Cabinet Material	SUS304 Stainless Steel
Working Environment	Indoor/Outdoor	Lid Material	SUS304 Stainless Steel
Lane Width(mm)	1,050	Barrier Material	SUS304 Stainless Steel
Footprint(mm*mm)	1610*1200	Barrier Movement	Swing
Dimensions(mm)	L=1200, W=280, H=1000	Emergency Mode	Y
Dimension with Packing(mm)	L=1310, W=800, H=1100	Security Level	Medium
Net Weight(kg)	118	MCBF	2 million

**SBTL2011**

Power Requirements	AC110V/220V, 50/60HZ	Weight with Packing(kg)	160
Working Temperature	-28 °C~60 °C	LED Indicator	Y
Working Humidity	5%~80%	Cabinet Material	SUS304 Stainless Steel
Working Environment	Indoor/Outdoor	Lid Material	SUS304 Stainless Steel
Lane Width(mm)	1,050	Barrier Material	SUS304 Stainless Steel
Footprint(mm*mm)	1610*1200	Barrier Movement	Swing
Dimensions(mm)	L=1200, W=280, H=1000	Emergency Mode	Y
Dimension with Packing(mm)	L=1310, W=800, H=1100	Security Level	Medium
Net Weight(kg)	118	MCBF	2 million

**SBTL2000**

Power Requirements	AC110V/220V, 50/60HZ	Weight with Packing(kg)	160
Working Temperature	-28 °C~60 °C	LED Indicator	Y
Working Humidity	5%~80%	Cabinet Material	SUS304 Stainless Steel
Working Environment	Indoor/Outdoor	Lid Material	SUS304 Stainless Steel
Lane Width(mm)	1,050	Barrier Material	SUS304 Stainless Steel
Footprint(mm*mm)	1610*1200	Barrier Movement	Swing
Dimensions(mm)	L=1200, W=280, H=1000	Emergency Mode	Y
Dimension with Packing(mm)	L=1310, W=800, H=1100	Security Level	Medium
Net Weight(kg)	118	MCBF	2 million



## SBTL2200

- Power Requirements: AC 100~120V, 50/60Hz
- Working Temperature: -28°C~60°C
- Working Humidity: 5%~80%
- Working Environment: Indoor/Outdoor
- Lane Width(mm): 1050
- Footprint(mm\*mm): 1270\*1200
- Dimension(mm): 1200\*280\*1000 (L\*W\*H)
- Dimension with Packing(mm): 1310\*420\*1100 (L\*W\*H)
- Net Weight(kg): 68
- Weight with Packing(kg): 96
- LED Indicator: Y
- Cabinet Material: SUS304 Stainless Steel
- Lid Material: SUS304 Stainless Steel
- Barrier Material: SUS304 Stainless Steel
- Barrier Movement: Swing
- Emergency Mode: Y
- Security Level: Medium
- MCBF: 2 million



## SBTL2211

- Power Requirements: AC 100~120V, 50/60Hz
- Working Temperature: -28°C~60°C
- Working Humidity: 5%~80%
- Working Environment: Indoor/Outdoor
- Lane Width(mm): 1050
- Footprint(mm\*mm): 1270\*1200
- Dimension(mm): 1200\*280\*1000 (L\*W\*H)
- Dimension with Packing(mm): 1310\*420\*1100 (L\*W\*H)
- Net Weight(kg): 68
- Weight with Packing(kg): 96
- LED Indicator: Y
- Cabinet Material: SUS304 Stainless Steel
- Lid Material: SUS304 Stainless Steel
- Barrier Material: SUS304 Stainless Steel
- Barrier Movement: Swing
- Emergency Mode: Y
- Security Level: Medium
- MCBF: 2 million

## SBTL2222

- Power Requirements: AC 100~120V, 50/60Hz
- Working Temperature: -28°C~60°C
- Working Humidity: 5%~80%
- Working Environment: Indoor/Outdoor
- Lane Width(mm): 1050
- Footprint(mm\*mm): 1270\*1200
- Dimension(mm): 1200\*280\*1000 (L\*W\*H)
- Dimension with Packing(mm): 1310\*420\*1100 (L\*W\*H)
- Net Weight(kg): 68
- Weight with Packing(kg): 96
- LED Indicator: Y
- Cabinet Material: SUS304 Stainless Steel
- Lid Material: SUS304 Stainless Steel
- Barrier Material: SUS304 Stainless Steel
- Barrier Movement: Swing
- Emergency Mode: Y
- Security Level: Medium
- MCBF: 2 million





## SBTL3000

- Power Requirements: AC 100~120V, 50/60Hz
- Working Temperature: -28°C~60°C
- Working Humidity: 5%~80%
- Working Environment: Indoor/Outdoor
- Lane Width(mm): 1050
- Footprint(mm\*mm): 1570\*1500
- Dimension(mm): 1500\*260\*1000 (L\*W\*H)
- Dimension with Packing(mm): 1640\*760\*1100 (L\*W\*H)
- Net Weight(kg): 114
- Weight with Packing(kg): 161
- LED Indicator: Y
- Cabinet Material: SUS304 Stainless Steel
- Lid Material: SUS304 Stainless Steel
- Barrier Material: SUS304 Stainless Steel
- Barrier Movement: Swing
- Emergency Mode: Y
- Security Level: Medium
- MCBF: 2 million



## SBTL3011

- Power Requirements: AC 100~120V, 50/60Hz
- Working Temperature: -28°C~60°C
- Working Humidity: 5%~80%
- Working Environment: Indoor/Outdoor
- Lane Width(mm): 1050
- Footprint(mm\*mm): 1570\*1500
- Dimension(mm): 1500\*260\*1000 (L\*W\*H)
- Dimension with Packing(mm): 1640\*760\*1100 (L\*W\*H)
- Net Weight(kg): 114
- Weight with Packing(kg): 161
- LED Indicator: Y
- Cabinet Material: SUS304 Stainless Steel
- Lid Material: SUS304 Stainless Steel
- Barrier Material: SUS304 Stainless Steel
- Barrier Movement: Swing
- Emergency Mode: Y
- Security Level: Medium
- MCBF: 2 million

## SBTL3022



- Power Requirements: AC 100~120V, 50/60Hz
- Working Temperature: -28°C~60°C
- Working Humidity: 5%~80%
- Working Environment: Indoor/Outdoor
- Lane Width(mm): 1050
- Footprint(mm\*mm): 1570\*1500
- Dimension(mm): 1500\*260\*1000 (L\*W\*H)
- Dimension with Packing(mm): 1640\*760\*1100 (L\*W\*H)
- Net Weight(kg): 114
- Weight with Packing(kg): 161
- LED Indicator: Y
- Cabinet Material: SUS304 Stainless Steel
- Lid Material: SUS304 Stainless Steel
- Barrier Material: SUS304 Stainless Steel
- Barrier Movement: Swing
- Emergency Mode: Y
- Security Level: Medium
- MCBF: 2 million



## SBTL3200

- Power Requirements: AC 100~120V, 50/60Hz
- Working Temperature: -28°C~60°C
- Working Humidity: 5%~80%
- Working Environment: Indoor/Outdoor
- Lane Width(mm): 1050
- Footprint(mm\*mm): 1250\*1500
- Dimension(mm): 1500\*260\*1000 (L\*W\*H)
- Dimension with Packing(mm): 1640\*400\*1100 (L\*W\*H)
- Net Weight(kg): 66
- Weight with Packing(kg): 98
- LED Indicator: Y
- Cabinet Material: SUS304 Stainless Steel
- Lid Material: SUS304 Stainless Steel
- Barrier Material: SUS304 Stainless Steel
- Barrier Movement: Swing
- Emergency Mode: Y
- Security Level: Medium
- MCBF: 2 million



## SBTL3211

- Power Requirements: AC 100~120V, 50/60Hz
- Working Temperature: -28°C~60°C
- Working Humidity: 5%~80%
- Working Environment: Indoor/Outdoor
- Lane Width(mm): 1050
- Footprint(mm\*mm): 1250\*1500
- Dimension(mm): 1500\*260\*1000 (L\*W\*H)
- Dimension with Packing(mm): 1640\*400\*1100 (L\*W\*H)
- Net Weight(kg): 66
- Weight with Packing(kg): 98
- LED Indicator: Y
- Cabinet Material: SUS304 Stainless Steel
- Lid Material: SUS304 Stainless Steel
- Barrier Material: SUS304 Stainless Steel
- Barrier Movement: Swing
- Emergency Mode: Y
- Security Level: Medium
- MCBF: 2 million

## SBTL3222

- Power Requirements: AC 100~120V, 50/60Hz
- Working Temperature: -28°C~60°C
- Working Humidity: 5%~80%
- Working Environment: Indoor/Outdoor
- Lane Width(mm): 1050
- Footprint(mm\*mm): 1250\*1500
- Dimension(mm): 1500\*260\*1000 (L\*W\*H)
- Dimension with Packing(mm): 1640\*400\*1100 (L\*W\*H)
- Net Weight(kg): 66
- Weight with Packing(kg): 98
- LED Indicator: Y
- Cabinet Material: SUS304 Stainless Steel
- Lid Material: SUS304 Stainless Steel
- Barrier Material: SUS304 Stainless Steel
- Barrier Movement: Swing
- Emergency Mode: Y
- Security Level: Medium
- MCBF: 2 million



## Flap Barrier Turnstile



**FBL1000/FBL1011**



**FBL1022**

### FBL1000

power Requirement	AC 100~120V/200~240V, 50/60Hz	Weight with Packing(kg)	153
Working Temperature	-28 °C~60 °C	LED Indicator	Y
Working Humidity	5%~80%	Cabinet Material	SUS304 Stainless Steel
Working Environment	Indoor/Outdoor	Lid Material	SUS304 Stainless Steel
Lan Width(mm)	600	Barrier Material	SUS304 Stainless Steel
Footprint(mm*mm)	1200*870	Barrier Movement	Retracting
Dimension(mm)	L=870, W=300, H=1000	Emergency Mode	Y
Dimension with Packing(mm)	L=1000, W=840, H=1090	Security Level	Medium
Net Weight(kg)	97	MCBF	2 million

### FBL1011

power Requirement	AC 100~120V/200~240V, 50/60Hz	Weight with Packing(kg)	153
Working Temperature	-28 °C~60 °C	LED Indicator	Y
Working Humidity	5%~80%	Cabinet Material	SUS304 Stainless Steel
Working Environment	Indoor/Outdoor	Lid Material	SUS304 Stainless Steel
Lan Width(mm)	600	Barrier Material	SUS304 Stainless Steel
Footprint(mm*mm)	1200*870	Barrier Movement	Retracting
Dimension(mm)	L=870, W=300, H=1000	Emergency Mode	Y
Dimension with Packing(mm)	L=1000, W=840, H=1090	Security Level	Medium
Net Weight(kg)	97	MCBF	2 million

### FBL1022

power Requirement	AC 100~120V/200~240V, 50/60Hz	Weight with Packing(kg)	153
Working Temperature	-28 °C~60 °C	LED Indicator	Y
Working Humidity	5%~80%	Cabinet Material	SUS304 Stainless Steel
Working Environment	Indoor/Outdoor	Lid Material	SUS304 Stainless Steel
Lan Width(mm)	600	Barrier Material	SUS304 Stainless Steel
Footprint(mm*mm)	1200*870	Barrier Movement	Retracting
Dimension(mm)	L=870, W=300, H=1000	Emergency Mode	Y
Dimension with Packing(mm)	L=1000, W=840, H=1090	Security Level	Medium
Net Weight(kg)	97	MCBF	2 million

## FBL1200



- Power Requirements:  
AC 100~120V/200~240V, 50/60Hz
- Working Temperature: -28°C~60°C
- Working Humidity: 5%~85%
- Working Environment:  
Indoor/Outdoor
- Lane Width(mm): 600
- Footprint(mm\*mm): 840\*870
- Dimensions(mm):  
870\*300\*1000(L\*W\*H)
- Dimension with Packing(mm):  
1000\*430\*1100(L\*W\*H)
- Net Weight(kg): 58
- Weight with Packing(kg): 81
- LED Indicator: Y
- Cabinet Material:  
SUS304 Stainless Steel
- Lid Material: SUS304 Stainless Steel
- Barrier Material: Acrylic
- Barrier Movement: Retracting
- Emergency Mode: Y
- Security Level: Medium
- MCBF: 2 million

## FBL1211



- Power Requirements:  
AC 100~120V/200~240V, 50/60Hz
- Working Temperature: -28°C~60°C
- Working Humidity: 5%~85%
- Working Environment:  
Indoor/Outdoor
- Lane Width(mm): 600
- Footprint(mm\*mm): 840\*870
- Dimensions(mm):  
870\*300\*1000(L\*W\*H)
- Dimension with Packing(mm):  
1000\*430\*1100(L\*W\*H)
- Net Weight(kg): 58
- Weight with Packing(kg): 81
- LED Indicator: Y
- Cabinet Material:  
SUS304 Stainless Steel
- Lid Material: SUS304 Stainless Steel
- Barrier Material: Acrylic
- Barrier Movement: Retracting
- Emergency Mode: Y
- Security Level: Medium
- MCBF: 2 million

## FBL1222



- Power Requirements:  
AC 100~120V/200~240V, 50/60Hz
- Working Temperature: -28°C~60°C
- Working Humidity: 5%~85%
- Working Environment:  
Indoor/Outdoor
- Lane Width(mm): 600
- Footprint(mm\*mm): 840\*870
- Dimensions(mm):  
870\*300\*1000(L\*W\*H)
- Dimension with Packing(mm):  
1000\*430\*1100(L\*W\*H)
- Net Weight(kg): 58
- Weight with Packing(kg): 81
- LED Indicator: Y
- Cabinet Material:  
SUS304 Stainless Steel
- Lid Material: SUS304 Stainless Steel
- Barrier Material: Acrylic
- Barrier Movement: Retracting
- Emergency Mode: Y
- Security Level: Medium
- MCBF: 2 million



## FBL2000

- Power Requirements:  
AC 100~120V/200~240V, 50/60Hz
- Working Temperature: -28°C~60°C
- Working Humidity: 5%~85%
- Working Environment:  
Indoor/Outdoor
- Lane Width(mm): 600
- Footprint(mm\*mm): 1200\*1150
- Dimensions(mm):  
1150\*300\*1000(L\*W\*H)
- Dimension with Packing(mm):  
1480\*420\*1100(L\*W\*H)
- Net Weight(kg): 119
- Weight with Packing(kg): 157
- LED Indicator: Y
- Cabinet Material:  
SUS304 Stainless Steel
- Lid Material: SUS304 Stainless Steel
- Barrier Material: Acrylic
- Barrier Movement: Retracting
- Emergency Mode: Y
- Security Level: Medium
- MCBF: 2 million



## FBL2011

- Power Requirements:  
AC 100~120V/200~240V, 50/60Hz
- Working Temperature: -28°C~60°C
- Working Humidity: 5%~85%
- Working Environment:  
Indoor/Outdoor
- Lane Width(mm): 600
- Footprint(mm\*mm): 1200\*1150
- Dimensions(mm):  
1150\*300\*1000(L\*W\*H)
- Dimension with Packing(mm):  
1480\*420\*1100(L\*W\*H)
- Net Weight(kg): 119
- Weight with Packing(kg): 157
- LED Indicator: Y
- Cabinet Material:  
SUS304 Stainless Steel
- Lid Material: SUS304 Stainless Steel
- Barrier Material: Acrylic
- Barrier Movement: Retracting
- Emergency Mode: Y
- Security Level: Medium
- MCBF: 2 million



## FBL2022

- Power Requirements:  
AC 100~120V/200~240V, 50/60Hz
- Working Temperature: -28°C~60°C
- Working Humidity: 5%~85%
- Working Environment:  
Indoor/Outdoor
- Lane Width(mm): 600
- Footprint(mm\*mm): 1200\*1150
- Dimensions(mm):  
1150\*300\*1000(L\*W\*H)
- Dimension with Packing(mm):  
1480\*420\*1100(L\*W\*H)
- Net Weight(kg): 119
- Weight with Packing(kg): 157
- LED Indicator: Y
- Cabinet Material:  
SUS304 Stainless Steel
- Lid Material: SUS304 Stainless Steel
- Barrier Material: Acrylic
- Barrier Movement: Retracting
- Emergency Mode: Y
- Security Level: Medium
- MCBF: 2 million



## FBL2200



- Power Requirements:  
AC 100~120V/200~240V, 50/60Hz
- Working Temperature: -28°C~60°C
- Working Humidity: 5%~85%
- Working Environment:  
Indoor/Outdoor
- Lane Width(mm): 600
- Footprint(mm\*mm): 840\*1150
- Dimensions(mm):  
1150\*300\*1000(L\*W\*H)
- Dimension with Packing(mm):  
1480\*410\*1100(L\*W\*H)
- Net Weight(kg): 69
- Weight with Packing(kg): 98
- LED Indicator: Y
- Cabinet Material:  
SUS304 Stainless Steel
- Lid Material: SUS304 Stainless Steel
- Barrier Material: Acrylic
- Barrier Movement: Retracting
- Emergency Mode: Y
- Security Level: Medium
- MCBF: 2 million

## FBL2211



- Power Requirements:  
AC 100~120V/200~240V, 50/60Hz
- Working Temperature: -28°C~60°C
- Working Humidity: 5%~85%
- Working Environment:  
Indoor/Outdoor
- Lane Width(mm): 600
- Footprint(mm\*mm): 840\*1150
- Dimensions(mm):  
1150\*300\*1000(L\*W\*H)
- Dimension with Packing(mm):  
1480\*410\*1100(L\*W\*H)
- Net Weight(kg): 69
- Weight with Packing(kg): 98
- LED Indicator: Y
- Cabinet Material:  
SUS304 Stainless Steel
- Lid Material: SUS304 Stainless Steel
- Barrier Material: Acrylic
- Barrier Movement: Retracting
- Emergency Mode: Y
- Security Level: Medium
- MCBF: 2 million

## FBL2222



- Power Requirements:  
AC 100~120V/200~240V, 50/60Hz
- Working Temperature: -28°C~60°C
- Working Humidity: 5%~85%
- Working Environment:  
Indoor/Outdoor
- Lane Width(mm): 600
- Footprint(mm\*mm): 840\*1150
- Dimensions(mm):  
1150\*300\*1000(L\*W\*H)
- Dimension with Packing(mm):  
1480\*410\*1100(L\*W\*H)
- Net Weight(kg): 69
- Weight with Packing(kg): 98
- LED Indicator: Y
- Cabinet Material:  
SUS304 Stainless Steel
- Lid Material: SUS304 Stainless Steel
- Barrier Material: Acrylic
- Barrier Movement: Retracting
- Emergency Mode: Y
- Security Level: Medium
- MCBF: 2 million



## FBL4000

- Power Requirements: AC 100~120V, 50/60Hz
- Working Temperature: -28°C~60°C
- Working Humidity: 5%~80%
- Working Environment: Indoor/Outdoor
- Lane Width(mm): 600
- Footprint(mm\*mm): 1350\*1200
- Dimension(mm): 1350\*300\*1010 (L\*W\*H)
- Dimension with Packing(mm): 1500\*840\*1010 (L\*W\*H)
- Net Weight(kg): 142
- Weight with Packing(kg): 211
- LED Indicator: Y
- Cabinet Material: SUS304 Stainless Steel
- Lid Material: SUS304 Stainless Steel
- Barrier Material: Acrylic
- Barrier Movement: Retracting
- Emergency Mode: Y
- Security Level: Medium
- MCBF: 2 million



## FBL4011

- Power Requirements: AC 100~120V, 50/60Hz
- Working Temperature: -28°C~60°C
- Working Humidity: 5%~80%
- Working Environment: Indoor/Outdoor
- Lane Width(mm): 600
- Footprint(mm\*mm): 1350\*1200
- Dimension(mm): 1350\*300\*1010 (L\*W\*H)
- Dimension with Packing(mm): 1500\*840\*1010 (L\*W\*H)
- Net Weight(kg): 142
- Weight with Packing(kg): 211
- LED Indicator: Y
- Cabinet Material: SUS304 Stainless Steel
- Lid Material: SUS304 Stainless Steel
- Barrier Material: Acrylic
- Barrier Movement: Retracting
- Emergency Mode: Y
- Security Level: Medium
- MCBF: 2 million

## FBL4022

- Power Requirements: AC 100~120V, 50/60Hz
- Working Temperature: -28°C~60°C
- Working Humidity: 5%~80%
- Working Environment: Indoor/Outdoor
- Lane Width(mm): 600
- Footprint(mm\*mm): 1350\*1200
- Dimension(mm): 1350\*300\*1010 (L\*W\*H)
- Dimension with Packing(mm): 1500\*840\*1010 (L\*W\*H)
- Net Weight(kg): 142
- Weight with Packing(kg): 211
- LED Indicator: Y
- Cabinet Material: SUS304 Stainless Steel
- Lid Material: SUS304 Stainless Steel
- Barrier Material: Acrylic
- Barrier Movement: Retracting
- Emergency Mode: Y
- Security Level: Medium
- MCBF: 2 million





## FBL4200

- Power Requirements: AC 100~120V, 50/60Hz
- Working Temperature: -28°C~60°C
- Working Humidity: 5%~80%
- Working Environment: Indoor/Outdoor
- Lane Width(mm): 600
- Footprint(mm\*mm): 1350\*840
- Dimension(mm): 1350\*300\*1010 (L\*W\*H)
- Dimension with Packing(mm): 1500\*400\*1010 (L\*W\*H)
- Net Weight(kg): 84
- Weight with Packing(kg): 119
- LED Indicator: Y
- Cabinet Material: SUS304 Stainless Steel
- Lid Material: SUS304 Stainless Steel
- Barrier Material: Acrylic
- Barrier Movement: Retracting
- Emergency Mode: Y
- Security Level: Medium
- MCBF: 2 million



## FBL4211

- Power Requirements: AC 100~120V, 50/60Hz
- Working Temperature: -28°C~60°C
- Working Humidity: 5%~80%
- Working Environment: Indoor/Outdoor
- Lane Width(mm): 600
- Footprint(mm\*mm): 1350\*840
- Dimension(mm): 1350\*300\*1010 (L\*W\*H)
- Dimension with Packing(mm): 1500\*400\*1010 (L\*W\*H)
- Net Weight(kg): 84
- Weight with Packing(kg): 119
- LED Indicator: Y
- Cabinet Material: SUS304 Stainless Steel
- Lid Material: SUS304 Stainless Steel
- Barrier Material: Acrylic
- Barrier Movement: Retracting
- Emergency Mode: Y
- Security Level: Medium
- MCBF: 2 million

## FBL4222

- Power Requirements: AC 100~120V, 50/60Hz
- Working Temperature: -28°C~60°C
- Working Humidity: 5%~80%
- Working Environment: Indoor/Outdoor
- Lane Width(mm): 600
- Footprint(mm\*mm): 1350\*840
- Dimension(mm): 1350\*300\*1010 (L\*W\*H)
- Dimension with Packing(mm): 1500\*400\*1010 (L\*W\*H)
- Net Weight(kg): 84
- Weight with Packing(kg): 119
- LED Indicator: Y
- Cabinet Material: SUS304 Stainless Steel
- Lid Material: SUS304 Stainless Steel
- Barrier Material: Acrylic
- Barrier Movement: Retracting
- Emergency Mode: Y
- Security Level: Medium
- MCBF: 2 million





**FBL5000**



**FBL5011**



**FBL5022**

**FBL5000**

power Requirement	AC 100~120V/200~240V, 50/60Hz	Weight with Packing(kg)	196
Working Temperature	-28 °C~60 °C	LED Indicator	Y
Working Humidity	5%~80%	Cabinet Material	SUS304 Stainless Steel
Working Environment	Indoor/Outdoor	Lid Material	SUS304 Stainless Steel
Lan Width(mm)	600	Barrier Material	Acrylic
Footprint(mm*mm)	1200*1200	Barrier Movement	Retracting
Dimension(mm)	L=1200, W=300, H=1010	Emergency Mode	Y
Dimension with Packing(mm)	L=1400, W=840, H=1010	Security Level	Medium
Net Weight(kg)	126	MCBF	2 million

**FBL5011**

power Requirement	AC 100~120V/200~240V, 50/60Hz	Weight with Packing(kg)	196
Working Temperature	-28 °C~60 °C	LED Indicator	Y
Working Humidity	5%~80%	Cabinet Material	SUS304 Stainless Steel
Working Environment	Indoor/Outdoor	Lid Material	SUS304 Stainless Steel
Lan Width(mm)	600	Barrier Material	Acrylic
Footprint(mm*mm)	1200*1200	Barrier Movement	Retracting
Dimension(mm)	L=1200, W=300, H=1010	Emergency Mode	Y
Dimension with Packing(mm)	L=1400, W=840, H=1010	Security Level	Medium
Net Weight(kg)	126	MCBF	2 million

**FBL5022**

power Requirement	AC 100~120V/200~240V, 50/60Hz	Weight with Packing(kg)	196
Working Temperature	-28 °C~60 °C	LED Indicator	Y
Working Humidity	5%~80%	Cabinet Material	SUS304 Stainless Steel
Working Environment	Indoor/Outdoor	Lid Material	SUS304 Stainless Steel
Lan Width(mm)	600	Barrier Material	Acrylic
Footprint(mm*mm)	1200*1200	Barrier Movement	Retracting
Dimension(mm)	L=1200, W=300, H=1010	Emergency Mode	Y
Dimension with Packing(mm)	L=1400, W=840, H=1010	Security Level	Medium
Net Weight(kg)	126	MCBF	2 million



**FBL5200/FBL5211**



**FBL5222**

**FBL5200**

power Requirement	AC 100~120V/200~240V, 50/60Hz	Weight with Packing(kg)	116
Working Temperature	-28 °C~60 °C	LED Indicator	Y
Working Humidity	5%~80%	Cabinet Material	SUS304 Stainless Steel
Working Environment	Indoor/Outdoor	Lid Material	SUS304 Stainless Steel
Lan Width(mm)	600	Barrier Material	Acrylic
Footprint(mm*mm)	1200*840	Barrier Movement	Retracting
Dimension(mm)	L=1200, W=300, H=1010	Emergency Mode	Y
Dimension with Packing(mm)	L=1400, W=400, H=1010	Security Level	Medium
Net Weight(kg)	81	MCBF	2 million

**FBL5211**

power Requirement	AC 100~120V/200~240V, 50/60Hz	Weight with Packing(kg)	116
Working Temperature	-28 °C~60 °C	LED Indicator	Y
Working Humidity	5%~80%	Cabinet Material	SUS304 Stainless Steel
Working Environment	Indoor/Outdoor	Lid Material	SUS304 Stainless Steel
Lan Width(mm)	600	Barrier Material	Acrylic
Footprint(mm*mm)	1200*840	Barrier Movement	Retracting
Dimension(mm)	L=1200, W=300, H=1010	Emergency Mode	Y
Dimension with Packing(mm)	L=1400, W=400, H=1010	Security Level	Medium
Net Weight(kg)	81	MCBF	2 million

**FBL5222**

power Requirement	AC 100~120V/200~240V, 50/60Hz	Weight with Packing(kg)	116
Working Temperature	-28 °C~60 °C	LED Indicator	Y
Working Humidity	5%~80%	Cabinet Material	SUS304 Stainless Steel
Working Environment	Indoor/Outdoor	Lid Material	SUS304 Stainless Steel
Lan Width(mm)	600	Barrier Material	Acrylic
Footprint(mm*mm)	1200*840	Barrier Movement	Retracting
Dimension(mm)	L=1200, W=300, H=1010	Emergency Mode	Y
Dimension with Packing(mm)	L=1400, W=400, H=1010	Security Level	Medium
Net Weight(kg)	81	MCBF	2 million

## Full Height Turnstile

### FHT 2300

Power Requirements	AC110V/220V, 50/60Hz
Working Temperature	-28 °C~60 °C
Working Humidity	0%~95%
Working Environment	Indoor/Outdoor
Lane Width(mm)	580
Footprint(mm*mm)	1400*1395
Dimensions(mm)	L=1400, W=1395, H=2220
Dimension with Packing(mm)	1975x1085x935; 2100x1435x735
LED Indicator	Y
Cabinet Material	SUS304 Stainless Steel
Barrier Material	SUS304 Stainless Steel
Barrier Movement	Rotating
Emergency Mode	Y
Security Level	High
MCBF	2 million
Ingress Protection	IP54



### FHT 2311

Power Requirements	AC110V/220V, 50/60Hz
Working Temperature	-28 °C~60 °C
Working Humidity	0%~95%
Working Environment	Indoor/Outdoor
Lane Width(mm)	580
Footprint(mm*mm)	1400*1395
Dimensions(mm)	L=1400, W=1395, H=2220
Dimension with Packing(mm)	1975x1085x935; 2100x1435x735
LED Indicator	Y
Cabinet Material	SUS304 Stainless Steel
Barrier Material	SUS304 Stainless Steel
Barrier Movement	Rotating
Emergency Mode	Y
Security Level	High
MCBF	2 million
Ingress Protection	IP54



## FHT 2322

Power Requirements	AC110V/220V, 50/60Hz
Working Temperature	-28 °C~60 °C
Working Humidity	0%~95%
Working Environment	Indoor/Outdoor
Lane Width(mm)	580
Footprint(mm*mm)	1400*1395
Dimensions(mm)	L=1400, W=1395, H=2220
Dimension with Packing(mm)	1975x1085x935; 2100x1435x735
LED Indicator	Y
Cabinet Material	SUS304 Stainless Steel
Barrier Material	SUS304 Stainless Steel
Barrier Movement	Rotating
Emergency Mode	Y
Security Level	High
MCBF	2 million
Ingress Protection	IP54



## FHT 2400

Power Requirements	AC110V/220V, 50/60Hz
Working Temperature	-28 °C~60 °C
Working Humidity	0%~95%
Working Environment	Indoor/Outdoor
Lane Width(mm)	580
Footprint(mm*mm)	1400*1320
Dimensions(mm)	L=1400, W=1320, H=2220
Dimension with Packing(mm)	1975x925x895; 2100x1435x470
LED Indicator	Y
Cabinet Material	SUS304 Stainless Steel
Barrier Material	SUS304 Stainless Steel
Barrier Movement	Rotating
Emergency Mode	Y
Security Level	High
MCBF	2 million
Ingress Protection	IP54





## FHT 2411

Power Requirements	AC110V/220V, 50/60Hz
Working Temperature	-28 °C~60 °C
Working Humidity	0%~95%
Working Environment	Indoor/Outdoor
Lane Width(mm)	580
Footprint(mm*mm)	1400*1320
Dimensions(mm)	L=1400, W=1320, H=2220
Dimension with Packing(mm)	1975x925x895; 2100x1435x470
LED Indicator	Y
Cabinet Material	SUS304 Stainless Steel
Barrier Material	SUS304 Stainless Steel
Barrier Movement	Rotating
Emergency Mode	Y
Security Level	High
MCBF	2 million
Ingress Protection	IP54



## FHT 2422

Power Requirements	AC110V/220V, 50/60Hz
Working Temperature	-28 °C~60 °C
Working Humidity	0%~95%
Working Environment	Indoor/Outdoor
Lane Width(mm)	580
Footprint(mm*mm)	1400*1320
Dimensions(mm)	L=1400, W=1320, H=2220
Dimension with Packing(mm)	1975x925x895; 2100x1435x470
LED Indicator	Y
Cabinet Material	SUS304 Stainless Steel
Barrier Material	SUS304 Stainless Steel
Barrier Movement	Rotating
Emergency Mode	Y
Security Level	High
MCBF	2 million
Ingress Protection	IP54



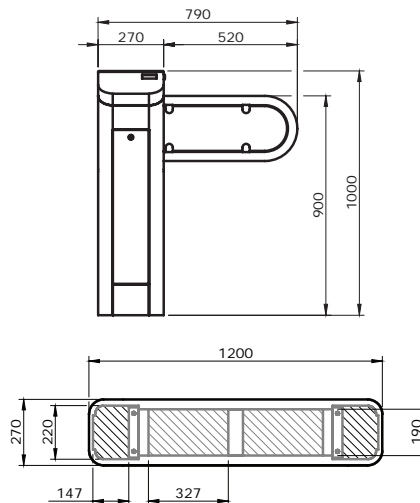
# Automatic Access Gate

## ZK110 Series

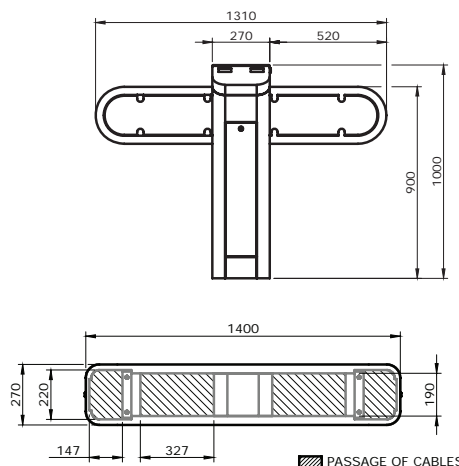
Access gate is based on the obstacle free passage system and its functions are controlled by infrared beam cells. It can be installed in any area of supervised access.

The system consists of a unit, out of the side of which extends a tu-bular barrier that closes off access and operates in the following way:

The barrier is always up, closing off access. It retracts by dropping downwards and concealing itself inside the unit on reception of an authorisation signal from a reader or push button. It allows one person to pass through, controlled by a photocell, and closes again once this has taken place. In the case that two people try to pass through at the same time, the system creates an audible alarm signal that an intrusion has been detected. As a security measure, the unit is equipped with a photocell system that stops the panel from rising up and hitting users while they are still in the passageway.



## ZK110S

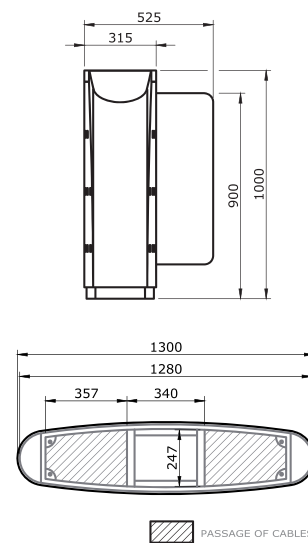


## ZK110S-D

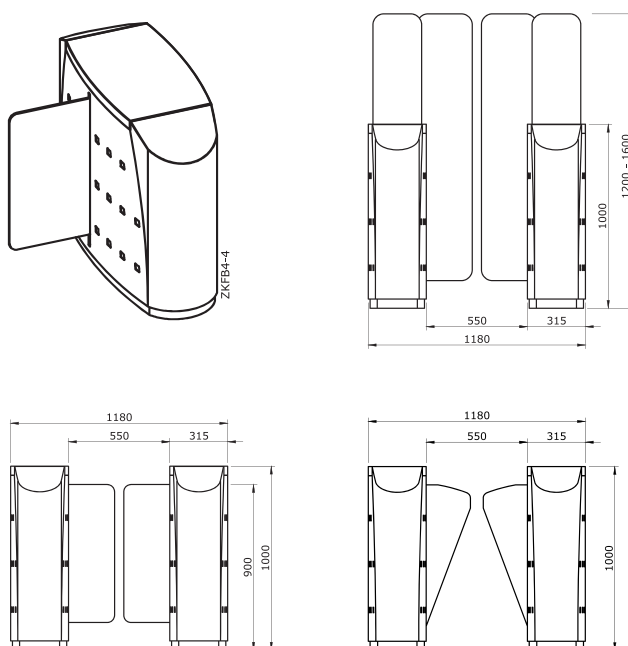
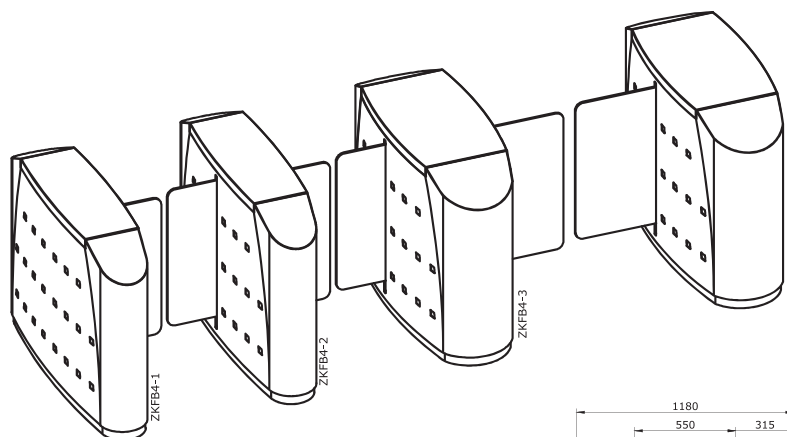
# Motorized Access Gate

## ZKFB4 Series

This is a high transit control passage, with dimensions suitable for any surroundings or location. Its structure is built in stainless steel, offering high wear and tear resistance and its brushed satin finish makes it easy to combine with any predominant colour in the area where it is going to be installed. All this unites with excellent functionality and low maintenance, make it especially suitable for controlling enclosures where there are large numbers of people present.



### Composition and options





# Security Inspection

ZKTeco's security inspection products offer a dependable and flexible intelligence security solution. We build a comprehensive security system to protect your entrance security, including People Inspection, Freight Inspection and Vehicle Inspection.



## Walk Through Metal Detector



### »» ZK-D1010S

- Supply Voltage: AC100V-240V
- Temperature Range: -20 °C~ + 50 °C
- Frequency: 4KHZ- 8KHZ
- Standard External Size(mm): 2200\*800\*475
- Standard Internal Size(mm): 2000\*710\*475
- Package size for Door Panels(mm): 2270\*560\*250\*1ctn
- Package size for Control Unit(mm): 750\*300\*240\*1ctn
- Gross Weight: 55KG
- Display: LED
- Zone Quantity: 1
- Each zone Sensitivity Level: 100



### »» ZK-D1065S

- Detection Zones: 6
- Sensitivity Levels: 100
- Display: LED
- Standard Functions: Detecting metal, Counting alarm and people.
- Optional Functions: 2000mAH Backup Battery
- Power Supply: AC100 V-240 V
- Working Temperature: -20°C~+50°C
- Working Frequency: 4KHz—8KHz
- Standard External Size: 2200mm(H)X800mm(W) X580mm(D)
- Standard Internal Size: 2010mm(H)X700mm(W) X500mm(D)
- Package Size for Door Panels: 2260\*650\*260mm \*1ctn
- Package Size for Control Unit: 780\*390\*250 mm\*1ctn
- Gross Weight:70kg

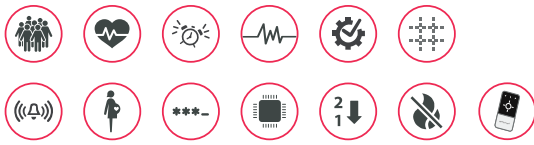


### »» ZK-D2180S

- Detection Zones: 18
- Sensitivity Levels: 256
- Display: 3.7" LCD display
- Standard Functions: Detecting metal, Counting alarm and people.
- Optional Functions: 2000mAH Backup Battery
- Power Supply: AC100 V-240 V
- Working Temperature: -20°C~+50°C
- Working Frequency: 4KHz—8KHz
- Standard External Size: 2200mm(H)X800mm(W) X580mm(D)
- Standard Internal Size: 2010mm(H)X700mm(W) X500mm(D)
- Package Size for Door Panels: 2260\*650\*260mm \*1ctn
- Package Size for Control Unit: 780\*390\*250 mm\*1ctn
- Gross weight: 70kg



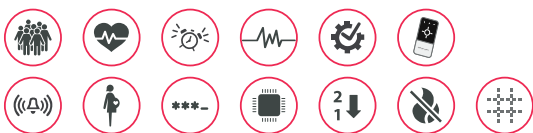
## »» ZK-D3180S



- Detection Zones: 18
- Sensitivity Levels: 256
- Display: 5.7" LCD display
- Standard Functions: Detecting metal, Counting alarm and people.
- Optional Functions: Remote control, 2000mAH Backup Battery
- Power Supply: AC100 V-240 V
- Working Temperature: -20°C~+50°C
- Working Frequency: 4KHz—8KHz
- Standard External Size: 2200mm(H)X800mm(W) X580mm(D)
- Standard Internal Size: 2010mm(H)X700mm(W) X500mm(D)
- Package Size for Door Panels: 2260\*650\*260mm \*1ctn
- Package Size for Control Unit: 780\*390\*250 mm\*1ctn
- Gross Weight: 70kg



## »» ZK-D4330



- Supply Voltage: AC100V- 240V
- Temperature Range: - 20 °C~+ 50 °C
- Frequency: 4KHZ- 8KHZ
- Standard External Size(mm): 2200\*930\*760
- Standard Internal Size(mm): 2010\*760\*760
- Package Size for Door Panels(mm): 2300\*335\*800\*1ctn
- Gross Weight: 70KG
- Display: 7 inch LCD
- Zone Quantity: 33
- Each zone Sensitivity Level: 300



## Handheld Metal Detector



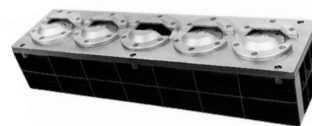
Model	ZK-D100S	Model	ZK-D180
Standard Functions	Detecting metal	Unit Dimensions(mm)	345*69*25
Optional Functions	Li battery, USB charge cable (for option)	Power Voltage	Standard 9V battery
Dimension	410(L) X 85(W) X 45(H) mm	Operating Voltage	7V-12V
Power Voltage	Standard 9V battery	Operating Current	<5mA
Operating Voltage	7V-9V	Alarm Terms	Sound(vibration) & light
Operating Curren	<50mA	Alarm Sound	75dB(A)
Alarm Terms	Sound (vibration) and light alarm simultaneously	Frequency	22KHz
Waterproof	IP31		/
Alarm Sound	≥75dB(A)		
Operation Frequency	25KHz		

## Vehicle Product-Vehicle Inspection



### »» ZK-VSCN100

- Camera: Intelligent color progressive line rapid scan CCD imaging
- Vertical Resolution of the Image: 5000\*2048 pixels
- Speed of vehicle: 1-60km/h (Recommended speed: ≤30km/h)
- Effective Field of View (FOV): less than 170°
- Auxiliary light: 160W
- Weight Capacity: ≤30T
- Water-proof Grade: IP68
- Device weight: 52KG
- Device Size: 670mm\*550mm\*750mm
- Operating Voltage: AC220V/110V, 50-60HZ
- Surveillance Camera: 2MP HD camera



### »» ZK-VSCN200

- Camera: Intelligent color progressive line rapid scan CCD imaging
- Vertical Resolution of the Image: 5000\*5340 pixels
- Speed of Vehicle: 1-60km/h (Recommended speed: ≤30km/h)
- Effective Field of View (FOV): less than 170°
- Auxiliary light: 320W
- Weight Capacity: ≤50T
- Water-proof Grade: IP68
- Scanning Device Weight: 105KG
- Scanning Device Volume: 1100mm×280mm×205mm
- Operating Voltage: AC110-240V, 50-60HZ
- Scanning Mode: linear scan, triggered by loop detector
- Surveillance Camera: 2MP HD camera



## ↘ Parking lot Product-Boom Barrier



### PB3000

- Standard Functions: Access control, Automatically lowered & raised, LED light tape
- Optional Functions: Heater system, Cooling system, Boom illuminator system, Bumping bounce back system, Wooden Package, Controller(C3-100 or inBIO160)



Model	PB3010L/R	PB3030L/R	PB3060L/R
Lane Width	3M, up to 3.8M with telescopic boom	4M, up to 4.8M with telescopic boom	5M, up to 5.8M with telescopic boom
Opening / Closing Time	1.8S	3S	6S
Supply Voltage	110V AC or 220V AC		
Power Consumption Max	200W		
Frequency	50-60Hz		
Cabinet Material	SUS304 Stainless steel		
Boom Material	Aluminum Alloy		
Base Frame	Cast Iron		
Temperature Range	-20°C~+60°C		
Humidity Range	90%		
Ingress Protection	IP54		
Housing Dimensions (W x D x H)	300 x 280 x 980mm		
Net Weight (Without Boom)	56KG		

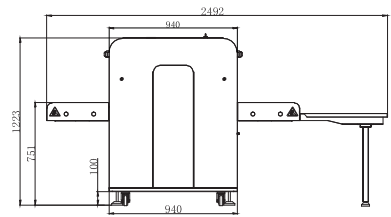
## ➤ X-Ray

Our X-ray inspection systems increases the operator's ability to identify potential threats; the device is designed to scan briefcases, carry-on baggage, small cargo parcels.

ZKTeco X-ray Series can use reliable high quality single or double energy X-ray generator. With the superb image algorithm, X-ray system could offer clear scanning image, which allows operators to identify potential threat items visually.

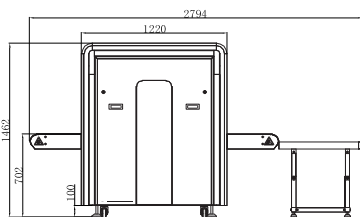
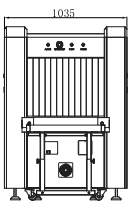
With ergonomic modern design, X-ray Series could help operators to identify suspicious items fast and accurately.

### ZKX5030 Series Single/Double Energy X-ray Inspection System



\* Note: ZKX5030A equipped with a computer keyboard

### ZKX6550 Series Double Energy X-ray Inspection System



	ZKX5030A	ZKX5030C	ZKX6550
<b>Specifications</b>			
Tunnel Size (mm)	507 (Width) x 305 (Height)		30.000
Speed	0.20 m/s		
Height of Transmission Belt	710 mm		
Maximum Load	≥150kg (Adequate distribution)		≥200kg (Adequate distribution)
Wire Resolution	≥34 AWG (0.16mm metal wire)	≥38 AWG (0.1mm metal wire)	≥40A WG (0.0787mm metal wire)
Space Definition	Horizontal Φ1.0mm \ Vertical Φ2.0mm		
Penetration Definition	≥32 AWG		≥34 AWG
Penetration	≥8mm Steel board	≥32mm Steel board	≥40mm Steel board
Monitor	17inch LED		
System Function	High density alarm, TIP, Luggage counter, System running timer, X-ray emitting timer, System maintainance, Training	High density alarm, Explosive/Drug auxiliary detect, TIP, Luggage counter, System running timer, X-ray emitting timer, System maintainance, Training	
Optional Function	Video surveillance system, Bidirection scan, Electrical weighing system, Energy saving mode, Ultra-sonic rat repellent		
Film Safety	ASA/ISO1600 standard of film safety		

### X-ray System

	Single	Dual	
Energy			
Tube Voltage	80Kv	140Kv	150Kv
Cooling	Seal oil cooling / 100%		
Single Inspection Dosage Rate	≤1.0μ Gy		
Radiation Leak Dosage	0.1μ Gy/h(5cm from the surface)		

### Installation Specification

Package Size (mm)	1970 × 1020 × 1420 (LxWxH)	2235 × 1160 × 1700 (LxWxH)
Console Desk Size (mm)	N/A	830 × 800 × 1330 (LxWxH)
Weight	400 Kg	530 Kg
Power Consumption	0.6kVA	
Noise	53.8dB(A)	





# GL Series

**Green Label is a project-oriented high-end product line, loaded with stunning and innovative features.**

The Green Label concept also includes a new market strategy by strictly controlling and regulating policies such as pricing and after-sale service.

# GL Series

## What is Green Label?

Green Label is a project-oriented high-end product line, loaded with stunning and innovative features such as the revolutionary Silk ID fingerprint sensor with 3D NFPV technology, capable to provide an exceptional performance toward dry, wet and rough fingerprints and the new hardware platform: equipped with an optimized a fast 1.2GHz processor which dramatically increase the verification speed.

This advanced product line is made with a modern hardware and a fireware design and is the perfect match for ZKTeco's latest web-based software platform to provide a full featured biometric time management and security solutions.

The Green Label consists of two product lines: Time & Attendance and Access Control.

### Innovative and Modern Product Design

1. United product image, family design of molds, UI and packaging.
2. Unique PUSH HTTPS Protocol, for a fast, stable and secure communication.
3. Covers all safety standards of verifications methods.
4. Compatible with ZKTeco's latest web-based time management and security solutions, software and products.



### Customer Centric After Sale Service

1. 36-month warranty.
2. Provides full documentation including multi-language brochures, user manuals, FAQ database, solutions and case studies.
3. All Green Label faulty devices have the priority right to be repaired.



# Time & Attendance Devices



**G1**  
Fingerprint



**G2**  
Fingerprint



**G3**  
Fingerprint + Face

## G3 Plus

### Anti-Glare Face & Fingerprint Time Attendance & Access Control Terminal

Card Capacity	10,000
Fingerprint Capacity	5,000
Face Capacity	3,000
User / Event Photos	N/A
Communication	TCP/IP, USB-Host, Wiegand Out, Optional Wi-Fi
Access Control functions	Lock, Alarm, Exit button, Door sensor, doorbell
Special features	Precise facial recognition under strong sunlight (up to 60,000 Lux)

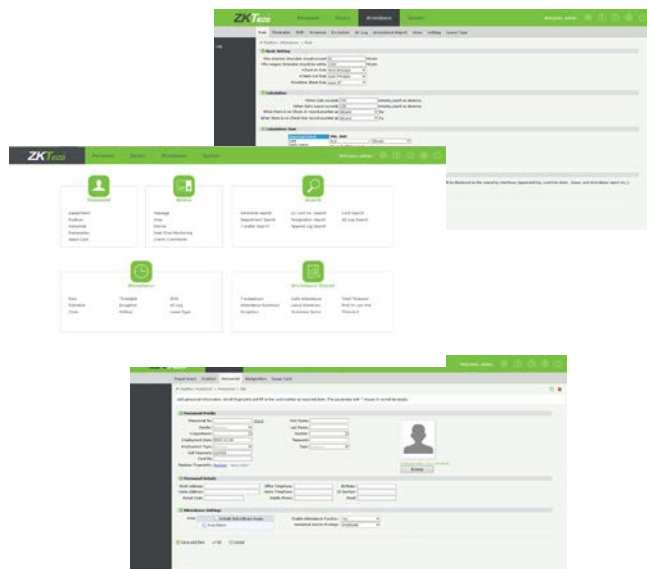


# Time & Attendance Software



## ZKTime Web 2.0

- Web-based Time Attendance Software
- Easy Inter-Regional Attendance Management
- Automatic Attendance Management
- Flexible Shift Scheduling
- Real-time Data Transmission
- Attendance Calculation & Reports
- Brand New User Interface
- Employee Self-Service Query System



# Access Control Devices



**ProRF-T**  
RFID



**ProCapture-T**  
RFID + Fingerprint

	ProRF-T	ProCapture-T
Card Capacity	50.000	10.000
Fingerprint Capacity	N/A	6.000
Transactions	100.000	
User / Event Photos	3.000 / 7.000	
Communication	TCP/IP, RS485, USB-Host, Wiegand IO	
Access Control functions	Lock, Alarm, Aux. In, Exit button, Door sensor, doorbell	

	inPulse	inPulse+
Card Capacity	2.000	
Fingerprint Capacity	N/A	1.500
Vein Capacity	1.500	
Transactions	100.000	
User / Event Photos	N/A	
Communication	TCP/IP, RS485, USB-Host, Wiegand IO	
Access Control functions	Lock, Alarm, Aux. In, Exit button, Door sensor, doorbell	



**inPulse**  
RFID + Vein



**inPulse+**  
RFID + Vein + Fingerprint



**ProFAC**  
RFID + Face



**ProBio**  
RFID + Face+ Fingerprint

	ProFAC	ProBio
Card Capacity	10.000	
Fingerprint Capacity	N/A	4.000
Face Capacity	2.000 (1:N) / 4.000 (1:1)	
Transactions	100.000	
User / Event Photos	4.000 / 2.000	
Communication	TCP/IP, RS485, USB-Host, Wiegand IO	
Access Control functions	Lock, Alarm, Aux. In, Exit button, Door sensor, doorbell	



## ProCapture-X

### POE Fingerprint Access Control Terminal

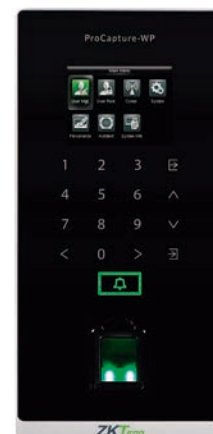


	ProCapture-X
Card Capacity	50.000
Fingerprint Capacity	20.000
Transactions	500.000
User / Event Photos	N/A
Communication	TCP/IP, RS485, USB-Host, Wiegand IO, Optional Wi-Fi
Access Control functions	Lock, Alarm, Aux. In, Exit button, Door sensor, doorbell
Special features	POE(Standard IEEE 802.3at)

## ProCapture-WP

### Water-Proof Fingerprint Access Control Terminal

	ProCapture-WP
Card Capacity	10.000
Fingerprint Capacity	20.000
Transactions	100.000
User / Event Photos	N/A
Communication	TCP/IP, RS485, Wiegand IO, Security Relay Box
Access Control functions	Lock, Alarm, Aux. In, Exit button, Door sensor, doorbell
Special features	WaterProof IP65 Rated



## External Readers

We also provide fingerprint reader FR1500-WP and card reader ProID Series to work ZK controllers. It is also optional to embed EM, Mifare or Desfire card reader inside, providing the most secure and cost-effective access control solution for your needs.



FR1500-WP



ProID10



ProID20



ProID30



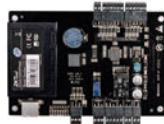
ProID40

# Access Control Panels

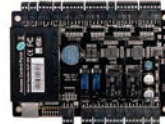
InBio Pro is an access control panel applying Push firmware with auto-sync functionality. It supports web based software ZKBioSecurity3.0, which offers an all-in-one solution for not only access control, but also video linkage, elevator control and visitor management. Made of environmentally friendly and safe materials, InBioPro is your most reliable choice with no doubt. Only proximity version also available through C3 Pro Series.

## RFID Access Controllers

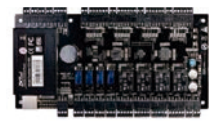
C3-100 PRO



C3-200 PRO



C3-400 PRO



Card Capacity:	30.000		
Event Capacity:	100.000		
Communication:	TCP/IP, RS485		
SDK:	Push SDK		
Wiegand Input:	2ea	4ea	4ea
Aux.output:	1ea	2ea	4ea
Aux.input:	none	2ea	4ea

## RFID & Fingerprint Access Controllers

inBIO160 PRO



inBIO260 PRO



inBIO460 PRO



Card Capacity:	30.000		
Fingerprint Capacity:	3.000 (optional 20.000)		
Event Capacity:	100.000		
Communication:	TCP/IP, RS485		
SDK:	Push SDK		
Wiegand Input:	2ea	4ea	4ea
Aux.output:	1ea	2ea	4ea
Aux.input:	1ea	2ea	4ea
Aux:	RS485 for Fingerprint Reader		

# Elevator Panels

The EC10 controller offers the user better security, scalability and versatility in an elevator control system. The access to each floor can be controlled according to different methods of verification, by fingerprint, proximity or pin. Furthermore one can program access control time-tables, thereby creating different access levels.

All of these functionalities are particularly recommended for a company's visitor management.

## EC10

Elevator control and more

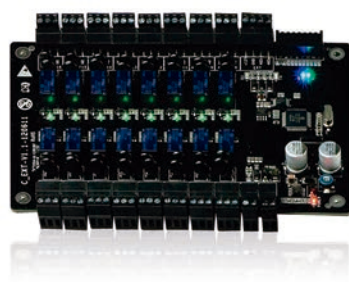


Number of Floors	10 Floors
Number of Supported EX16	3
Communication to EX16	RS485
Number of Reaser Supported	1 Reader
Type of Readers Supported	Wiegand readers or RS485 readers
Fingerprint Capacity	3.000
RFID Card Capacity	30.000
Event Capacity	100.000
Communication to PC	TCP/IP or RS485
CUP	32 bit 400MHz
RAM/Flash Memory	32M/128M
Power Supply	12V DC
Operating Temp.	0 - 45 °C
Dimension & Weight	242mmx95mmx60mm 0.8Kg

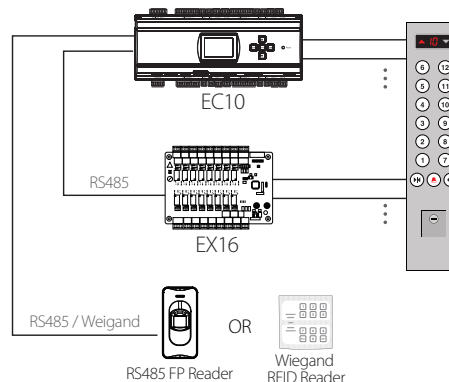
## EX16

EC10 offers a solution in buildings that manages up to 10 floors, although this can be expanded with up to 3 extension panels EX16, which cover 16 further floors each. This means our solution can manage up to 58 floors with the installation of one single control system.

Extension Board to Control 16 floors



Elevator Control System



# Access Control Software



All in One Biometric Security Advanced Solutions



## Features:



Web Based Platform



All-In-One Solution



Many Doors Management Capacity



Simple User Friendly UI



Email Notifications



Data Auto-Backup Function



Support 3rd Party Video Device



Global Anti-Passback and Linkage



LPR Camera for Parking



Flexible Card Format



Online Guard Patrol Feature



Time Attendance



Flexible Verification Mode



Activate or Deactivate the Door



Time Zone Settings for Exit button and Auxiliary Input



Hotel Module



Offline Elevator Control



Mobile APP

## ZKBioSecurity 3.1.0.0

### Professional Web-Based Access Control Software

ZKBioSecurity is the ultimate “All in One” web based security platform developed by ZKTeco. It contains multiple integrated modules: access control, time attendance, elevator control(online/offline), hotel module, visitor management, parking, guard patrol and video linkage. With an optimized system architecture designed for high level biometric identification and a modern-user friendly UI, ZKBioSecurity provides the most advanced solution for a whole new user experience.



## What's new in v3.1.0.0

- Newly added Time Attendance module can be used simultaneously with Access Control/Parking module.
- Newly added Parking module can effectively manage the vehicle's entry and exit using the LPR Camera or UHF or BT readers.
- Newly designed dashboard supports custom settings for different modules and also supports checking event statistics either weekly, monthly or yearly.
- Added newer advanced Access Control features such as Global Anti-Passback support setting by person, exporting report of who is inside and person availability feature and so on.
- Supports Import/Export with custom attributes and Import/Export of Personnel/Department is now more flexible.
- Module menus can also be shown in icon style. It can be customized in the setting.
- Supports automatic report functions in Time Attendance module.
- Supports OCR and ID Reader in Hotel management module.
- Updated OCR Features now supports more Countries.

## Video Surveillance

ZKTeco Surveillance Department, which is established in 2010, focuses on providing economic, competitive and well-featured security cameras in order to universally popularize security cameras. For the entry-level users, Analog HD camera and NVR are the perfect choices: up to 3 megapixel along with 4 in 1 compatible format (AHD/ CVI/ TVI/ CVBS). In 2016, ZKTeco officially launched the cutting edge long distance and wide dynamic facial recognition cameras, along with AI technology, completed with a well-developed software backend and a mobile App, which greatly enhanced the security market into another level.



ZKTeco



## ↘ HD Analog Camera-Eyeball Camera



### ES-34F12H



- Image Sensor: 1/3" 4MP CMOS
- Effective Pixels: 2560\*1440
- Video Frame System: 4MP@25fps (PAL); 4MP@30fps (NTSC)
- IR Distance: 10 ~ 20m
- Video Output: AHD/TVI/CVI/CVBS
- Lens: 3.6mm
- Video Setting: Contrast/Sharpness/Color Gain/Format/True WDR/DNR
- Horizontal FOV: 75°
- S/N Ratio: ≥50dB
- OSD: UTC support based on DVR
- AGC: Support
- White Balance: Auto/Manual
- Day & Night: Auto/Manual
- Working Environment: -30°C ~ 60°C; 10%~90% RH
- Dimension(color box): Φ102\*93.2mm



### ES-32D11H



- Lens: 2.8mm
- Horizontal FOV: 120°

### ES-32D12H

- Lens: 3.6mm
- Horizontal FOV: 85°

### ES-32D13H

- Lens: 6mm
- Horizontal FOV: 54°

- Image Sensor: 1/2.7" 2MP CMOS
- Effective Pixels: 1920\*1080
- Video Frame System: 1080P@25fps (PAL); 1080P@30fps (NTSC)
- IR Distance: 10 ~ 20m
- Video Output: AHD/TVI/CVI/CVBS
- S/N Ratio: ≥41dB
- OSD: UTC support based on DVR
- Working Environment: -30°C ~ 60°C; 10%~90% RH
- Dimension(color box): Φ102\*93.2mm



### ES-32E11H

- Lens: 2.8mm
- Horizontal FOV: 114°

### ES-32E12H

- Lens: 3.6mm
- Horizontal FOV: 78°

### ES-32E13H

- Lens: 6mm
- Horizontal FOV: 51°

- Image Sensor: 1/2.9" 2MP CMOS
- Effective Pixels: 1920\*1080
- Video Frame System: 1080P@25fps (PAL); 1080P@30fps (NTSC)
- IR Distance: 10 ~ 20m
- Video Output: AHD/TVI/CVI/CVBS
- S/N Ratio: ≥41dB
- OSD: UTC support based on DVR
- Working Environment: -30°C ~ 60°C; 10%~90% RH
- Dimension(color box): Φ102\*93.2mm





## EL-34F28I



- Image Sensor: 1/3" 4MP CMOS
- Effective Pixels: 2560\*1440
- Video Frame System: 1080P@25fps (PAL); 1080P@30fps (NTSC)
- IR Distance: 20 ~ 30m
- Video Output: AHD/TVI/CVI/CVBS
- Lens: Motorized 2.8-12mm
- Video Setting: Contrast/Sharpness/Color Gain/Format/True WDR/DNR



- Horizontal FOV: 25°-91°
- S/N Ratio: ≥50dB
- OSD: UTC support based on DVR
- AGC: Support
- White Balance: Auto/Manual
- Day & Night: Auto/Manual
- Working Environment: -30°C ~ 60°C; 10%~90% RH
- Dimension(color box): Φ111.6\*105mm



## ES-34F11H



- Lens: 2.8mm
- Horizontal FOV: 106°

- Image Sensor: 1/3" 4MP CMOS
- Effective Pixels: 2560\*1440
- Video Frame System : 4MP@25fps (PAL); 4MP@30fps (NTSC)
- IR Distance: 10 ~ 20m
- Video Output : AHD/TVI/CVI/CVBS

## ES-34F13H

- Lens: 3.6mm
- Horizontal FOV: 48°

- S/N Ratio : ≥50dB
- OSD : UTC support based on DVR
- Working Environment: -30°C ~ 60°C; 10%~90% RH
- Dimension(color box): Φ102\*93.2mm



## HD Analog Camera-Bullet Camera



### BS-34F12K



- Image Sensor: 1/3" 4MP CMOS
- Effective Pixels: 2560\*1440
- Video Frame System: 4MP@25fps (PAL); 4MP@30fps (NTSC)
- IR Distance: 10 ~ 20m
- Video Output: AHD/TVI/CVI/CVBS
- Lens: 3.6mm
- Video Setting: Contrast/Sharpness/Color Gain/Format/True WDR/DNR
- Horizontal FOV: 75°
- S/N Ratio: ≥50dB
- OSD : UTC support based on DVR
- AGC: Support
- White Balance: Auto/Manual
- Day & Night: Auto/Manual
- Working Environment: -30°C ~ 60°C; 10%~90% RH
- Dimension(color box): 160.3(L)\*63.4(W)\*64.5(H)mm



### BS-32D11K



- Lens: 2.8mm
- Horizontal FOV: 120°

### BS-32D12K

- Lens: 3.6mm
- Horizontal FOV: 85°

- Image Sensor: 1/2.7" 2MP CMOS
- Effective Pixels: 1920\*1080
- Video Frame System: 1080P@25fps (PAL); 1080P@30fps (NTSC)
- IR Distance: 10 ~ 20m
- Video Output: AHD/TVI/CVI/CVBS
- S/N Ratio: ≥41dB
- OSD: UTC support based on DVR
- Working Environment: -30°C ~ 60°C; 10%~90% RH
- Dimension(color box): 160.3 (L)\*63.4 (W)\*64.5 (H)mm



### ES-32E11K

- Lens: 2.8mm
- Horizontal FOV: 114°

### ES-32E12K

- Lens: 3.6mm
- Horizontal FOV: 78°

### ES-32E13K



- Image Sensor: 1/2.9" 2MP CMOS
- Effective Pixels: 1920\*1080
- Video Frame System: 1080P@25fps (PAL); 1080P@30fps (NTSC)
- IR Distance: 10 ~ 20m
- Video Output: AHD/TVI/CVI/CVBS
- S/N Ratio: ≥41dB
- OSD: UTC support based on DVR
- Working Environment: -30°C ~ 60°C; 10%~90% RH
- Dimension(color box): Φ102\*93.2mm

## BL-34F28L



- Image Sensor: 1/3" 4MP CMOS
- Effective Pixels: 2560\*1440
- Video Frame System: 1080P@25fps (PAL); 1080P@30fps (NTSC)
- IR Distance: 20 ~ 30m
- Video Output: AHD/TVI/CVI/CVBS
- Lens: Motorized 2.8-12mm
- Video Setting: Contrast/Sharpness/Color Gain/Format/True WDR/DNR
- Horizontal FOV: 25°-91°



- S/N Ratio: ≥50dB
- OSD: UTC support based on DVR
- AGC: Support
- White Balance: Auto/Manual
- Day & Night: Auto/Manual
- Working Environment: -30°C ~ 60°C; 10%~90% RH
- Dimension(color box): 186.5(L)\*71.7(W)\*84(H)mm



## BS-34F11K



- Lens: 2.8mm
- Horizontal FOV: 106°

- Image Sensor: 1/3" 4MP CMOS
- Effective Pixels: 2560\*1440
- Video Frame System: 4MP@25fps (PAL); 4MP@30fps (NTSC)
- IR Distance: 10 ~ 20m
- Video Output: AHD/TVI/CVI/CVBS

## BS-34F13K

- Lens: 3.6mm
- Horizontal FOV: 48°

- S/N Ratio: ≥50dB
- OSD: UTC support based on DVR
- Working Environment: -30°C ~ 60°C; 10%~90% RH
- Dimension(color box): 160.3 (L)\*63.4 (W)\*64.5 (H)mm

## HD Analog Camera-Dome Camera

### DL-34F12B



- Image Sensor: 1/3" 4MP Progressive Scan CMOS
- Effective Pixels: 2560\*1440
- Video Frame System:  
1080P@25fps (PAL);1080P@30fps (NTSC)
- IR Distance: 10 ~ 20m
- Video Output: AHD/TVI/CVI/CVBS
- Lens: 3.6mm
- Horizontal FOV: 75°
- S/N Ratio: ≥50dB
- OSD: UTC support based on DVR
- AGC: Support
- White Balance: Auto/Manual
- Day & Night: Auto/Manual
- Video Setting: Contrast/Sharpness/Color Gain/  
Format/True WDR/DNR
- Working Environment:  
-30°C~ 60°C; 10%~90% RH
- Dimensions: Φ133.1\*104mm

### DL-34F26B

- Image Sensor: 1/3" 4MP Progressive Scan CMOS
- Effective Pixels: 2560\*1440
- Video Frame System:  
1080P@25fps (PAL);1080P@30fps (NTSC)
- IR Distance: 20 ~ 30m
- Video Output: AHD/TVI/CVI/CVBS
- Lens: 2.8-12mm Varifocal
- Horizontal FOV: 25°-91°
- S/N Ratio: ≥50dB
- OSD: UTC support based on DVR
- AGC: Support
- White Balance: Auto/Manual
- Day & Night: Auto/Manual
- Video Setting: Contrast/Sharpness/Color Gain/  
Format/True WDR/DNR
- Working Environment:  
-30°C~ 60°C; 10%~90% RH
- Dimensions: Φ133.1\*104mm





**DL-32D26B**

• IR Distance: 20-30m

**DL-32D36B**

• IR Distance: 30-50m

- Image Sensor: 1/2.7" 2MP CMOS
- Effective Pixels: 1920\*1080
- Video Frame System: 1080P@25fps (PAL); 1080P@30fps (NTSC)
- Video Output: AHD/TVI/CVI/CVBS
- Lens: 2.8-12mm Varifocal
- Horizontal FOV: 30°-99°
- S/N Ratio: ≥41dB
- OSD: UTC support based on DVR
- Working Environment: -30°C ~ 60°C; 10%~90% RH
- Dimension(color box): Φ133.1x104.0mm



**DL-32E26B**

• IR Distance: 20-30m

**DL-32E36B**

• IR Distance: 30-50m

- Image Sensor: 1/2.9" 2MP CMOS
- Effective Pixels: 1920\*1080
- Video Frame System: 1080P@25fps (PAL); 1080P@30fps (NTSC)
- Video Output: AHD/TVI/CVI/CVBS
- Lens: 2.8-12mm Varifocal
- Horizontal FOV: 29°-104°
- S/N Ratio: ≥41dB
- OSD: UTC support based on DVR
- Working Environment: -30°C ~ 60°C; 10%~90% RH
- Dimension(color box): Φ133.1x104.0mm



**DL-34F26B**

• IR Distance: 20-30m

**DL-34F36B**

• IR Distance: 30-50m

- Image Sensor: 1/3" 4MP CMOS
- Effective Pixels: 2560\*1440
- Video Frame System: 4MP@25fps (PAL); 14MP@30fps (NTSC)
- Video Output: AHD/TVI/CVI/CVBS
- Lens: 2.8-12mm Varifocal
- Horizontal FOV: 25°-91°
- S/N Ratio: ≥50dB
- OSD: UTC support based on DVR
- Working Environment: -30°C ~ 60°C; 10%~90% RH
- Dimension(color box): Φ133.1x104.0mm

## HD Analog Camera-PTZ Camera



**PS-32A10B**

- IR Distance: 120m
- Lens: 4.7-94mm
- Zoom: 10x optical zoom
- Working Environment: -40°C ~ 60°C; 0%~95% RH
- Net Weight: 1.5kg



**PS-32B10C**


- IR Distance: 60m
- Lens: 5.1-51mm
- Zoom: 10x optical zoom
- Working Environment: -30°C ~ 60°C; 0%~95% RH
- Net Weight: 2kg



**PS-32C20D**

- IR Distance: 120m
- Lens: 4.7-94mm
- Zoom: 20x optical zoom
- Working Environment: -30°C ~ 60°C; 0%~95% RH
- Net Weight: 4.5kg

- Image Sensor: 1/2.9" Progressive Scan CMOS
- Effective Pixels: 1920\*1080
- Video Frame System: 1080P@25fps (PAL); 1080P@30fps (NTSC)
- Video Output: TVI/AHD/CVI/CVBS
- Pan: 360° endless
- Tilt: 0~90°

	Model	PL-52C18A	PL-52C30A
	Image Sensor	1/2.9" Low illumination CMOS	
	Effective Pixels	1920*1080	
	Min. illumination	Color: 0.01Lux @ (F1.2, AGC ON); 0 Lux with IR; B/W: 0.05 Lux @ (F1.2, AGC ON); 0 Lux with IR	
	Lens	18X Zoom, f=4.7-84.6mm, F1.6-F2.7	30X Zoom, f=4.3-129mm, F1.6-F5.0 Auto / Manual
	IR Range	120m	
	Video Compression	H.264	H.265/H.264
	Audio	G.711A	
	Main Stream	2MP (1920 * 1080)@25fps	
	Protocols	TCP/IP, HTTP, DHCP, DNS, DDNS, PPPoE, SMTP, NTP, (802.1x, IPv6 optional )	
	Memory Card	On-board storage, Up to 32G	
	Dimensions	208mm*443mm	

## IP Camera-Eyeball Camera

### ES-54N12H



- Image Sensor: 1/3" 4MP Progressive Scan CMOS
- Effective Pixels: 2560\*1440
- Min. illumination:  
Color: 0.01Lux @ (F1.2, AGC ON); 0 Lux with IR;  
B/W: 0.001Lux @ (F1.2, AGC ON); 0 Lux with IR
- Lens: 3.6mm
- IR Range: 10-20m
- Resolution: 4MP (2560\*1440), 3MP (2048\*1520, 2304\*1296), 1080P (1920\*1080), 720P (1280 \* 720P), D1, CIF
- Horizontal FOV: 75°
- Video Compression: H.265/H.264
- Audio: G.711A/G.711Mu/G.726/G.726ASF
- Bite Rate: 32Kbps~8Mbps
- Network Storage: Support 802.1X
- Network Protocols: TCP/IP, UDP, HTTP, IGMP, ICMP, DHCP, RTP/RTSP, DNS, DDNS, FTP, NTP, PPPOE, UPNP, SMTP, SNMP
- Interface Protocol: ONVIF Profile S/API
- ROI: Support 4 fixed region for mainstream and sub stream separately
- Dimensions: Ø102x93.2mm

### EL-54N28I

- Image Sensor: 1/3" 4MP Progressive Scan CMOS
- Effective Pixels: 2560\*1440
- Min. illumination:  
Color: 0.01Lux @ (F1.2, AGC ON); 0 Lux with IR;  
B/W: 0.001Lux @ (F1.2, AGC ON); 0 Lux with IR
- Lens: 2.8-12mm Motorized
- IR Range: 10-20m
- Resolution: 4MP (2560\*1440), 3MP (2048\*1520, 2304\*1296), 1080P (1920\*1080), 720P (1280 \* 720P), D1, CIF
- Horizontal FOV: 25°-91°
- Video Compression: H.265/H.264
- Audio: G.711A/G.711Mu/G.726/G.726ASF
- Bite Rate: 32Kbps~8Mbps
- Network Storage: Support 802.1X
- Network Protocols: TCP/IP, UDP, HTTP, IGMP, ICMP, DHCP, RTP/RTSP, DNS, DDNS, FTP, NTP, PPPOE, UPNP, SMTP, SNMP
- Interface Protocol: ONVIF Profile S/API
- ROI: Support 4 fixed region for mainstream and sub stream separately
- Dimensions: 160.3 (L)\*63.4 (W)\*64.5 (H)mm





### ES-52011H

- Lens: 2.8mm

### ES-52013H

- Lens: 6mm

### ES-52012H

- Lens: 3.6mm



- Image Sensor: 2MP 1/2.9" Progressive Scan CMOS
- Effective Pixels: 1920\*1080
- Min. illumination:
  - Color: 0.01Lux @ (F1.2, AGC ON); 0 Lux with IR
  - B/W: 0.001Lux @ (F1.2, AGC ON); 0 Lux with IR
- VIR Range: 10-20m
- Video Compression: AHD/TVI/CVI/CVBS
- Audio: G.711A/G.711Mu/G.726/G.726ASF
- Bite Rate: 32Kbps~8Mbps
- Interface Protocol: ONVIF Profile S/API
- ROI: Support 4 fixed region for mainstream and sub stream separately
- Dimensions:  $\Phi$ 102x93.2mm



### ES-52T11H

- Lens: 2.8mm

### ES-52T13H

- Lens: 6mm

### ES-52T12H

- Lens: 3.6mm



- Image Sensor: 2MP 1/2.8" Progressive Scan CMOS
- Effective Pixels: 1920\*1080
- Min. illumination:
  - Color: 0.01Lux @ (F1.2, AGC ON); 0 Lux with IR
  - B/W: 0.001Lux @ (F1.2, AGC ON); 0 Lux with IR
- VIR Range: 10-20m
- Video Compression: H.265/H.264
- Audio: G.711A/G.711Mu/G.726/G.726ASF
- Bite Rate: 32Kbps~8Mbps
- Interface Protocol: ONVIF Profile S/API
- ROI: Support 4 fixed region for mainstream and sub stream separately
- Dimensions:  $\Phi$ 102x93.2mm



### ES-54N11H

- Lens: 2.8mm

### ES-54N13H

- Lens: 3.6mm



- Image Sensor: 4MP 1/2.9" Progressive Scan CMOS
- Effective Pixels: 1920\*1080
- Min. illumination:
  - Color: 0.01Lux @ (F1.2, AGC ON); 0 Lux with IR
  - B/W: 0.001Lux @ (F1.2, AGC ON); 0 Lux with IR
- VIR Range: 10-20m
- Video Compression: AHD/TVI/CVI/CVBS
- Audio: G.711A/G.711Mu/G.726/G.726ASF
- Bite Rate: 32Kbps~8Mbps
- Interface Protocol: ONVIF Profile S/API
- ROI: Support 4 fixed region for mainstream and sub stream separately
- Dimensions:  $\Phi$ 102x93.2mm





**EL-52028I**

• IR Range: 20-30m

**EL-52038I**

• IR Range: 30-50m

- Image Sensor: 2MP 1/2.9" Progressive Scan CMOS
- Effective Pixels: 1920\*1080
- Min. illumination:  
Color: 0.01Lux @ (F1.2, AGC ON); 0 Lux with IR  
B/W: 0.001Lux @ (F1.2, AGC ON); 0 Lux with IR
- Lens: 2.8-12mm Motorized
- Video Compression: H.265/H.264
- Audio: G.711A/G.711Mu/G.726/G.726ASF
- Bite Rate: 32Kbps~8Mbps
- Interface Protocol: ONVIF Profile S/API
- ROI: Support 4 fixed region for mainstream and sub stream separately
- Dimensions:  $\Phi$ 111.6\*105mm



**ES-52T28I**

• IR Range: 20-30m

**ES-52T38I**

• IR Range: 30-50m

- Image Sensor: 2MP 1/2.8" Progressive Scan CMOS
- Effective Pixels: 1920\*1080
- Min. illumination:  
Color: 0.01Lux @ (F1.2, AGC ON); 0 Lux with IR  
B/W: 0.001Lux @ (F1.2, AGC ON); 0 Lux with IR
- Lens: 2.8-12mm Motorized
- Video Compression: H.265/H.264
- Audio: G.711A/G.711Mu/G.726/G.726ASF
- Bite Rate: 32Kbps~8Mbps
- Interface Protocol: ONVIF Profile S/API
- ROI: Support 4 fixed region for mainstream and sub stream separately
- Dimensions:  $\Phi$ 111.6\*105mm



**EL-54N36I**

• IR Range: 30-50m

- Image Sensor: 4MP 1/3" Progressive Scan CMOS
- Effective Pixels: 2560\*1440
- Min. illumination:  
Color: 0.01Lux @ (F1.2, AGC ON); 0 Lux with IR  
B/W: 0.001Lux @ (F1.2, AGC ON); 0 Lux with IR
- Lens: 2.8-12mm Motorized
- Video Compression: H.265/H.264
- Audio: G.711A/G.711Mu/G.726/G.726ASF
- Bite Rate: 32Kbps~8Mbps
- Interface Protocol: ONVIF Profile S/API
- ROI: Support 4 fixed region for mainstream and sub stream separately
- Dimensions:  $\Phi$ 111.6\*105mm

## IP Camera-Bullet Camera

### BS-54N12K



- Image Sensor: 4.0 MP 1/3" Progressive Scan CMOS
- Effective Pixels: 2560\*1440
- Min. illumination:  
Color: 0.01Lux @ (F1.2, AGC ON); 0 Lux with IR;  
B/W: 0.001Lux @ (F1.2, AGC ON); 0 Lux with IR
- Lens: 3.6mm
- IR Range: 10-20m
- Resolution: 4MP (2560\*1440), 3MP (2048\*1520, 2304\*1296), 1080P (1920\*1080), 720P (1280 \* 720P), D1, CIF
- Horizontal FOV: 75°
- Video Compression: H.265/H.264
- Audio: G.711A/G.711Mu/G.726/G.726ASF
- Bite Rate: 32Kbps~8Mbps
- Network Storage: Support 802.1X
- Network Protocols: TCP/IP, UDP, HTTP, IGMP, ICMP, DHCP, RTP/RTSP, DNS, DDNS, FTP, NTP, PPPOE, UPNP, SMTP, SNMP
- Interface Protocol: ONVIF Profile S/API
- ROI: Support 4 fixed region for mainstream and sub stream separately
- Dimensions: 160.3 (L)\*63.4 (W)\*64.5 (H)mm

### BL-54N28L

- Image Sensor: 4.0 MP 1/3" Progressive Scan CMOS
- Effective Pixels: 2560\*1440
- Min. illumination:  
Color: 0.01Lux @ (F1.2, AGC ON); 0 Lux with IR;  
B/W: 0.001Lux @ (F1.2, AGC ON); 0 Lux with IR
- Lens: 2.8-12mm Motorized
- IR Range: 20-30m
- Resolution: 4MP (2560\*1440), 3MP (2048\*1520, 2304\*1296), 1080P (1920\*1080), 720P (1280 \* 720P), D1, CIF
- Horizontal FOV: 25°-91°
- Video Compression: H.265/H.264
- Audio: G.711A/G.711Mu/G.726/G.726ASF
- Bite Rate: 32Kbps~8Mbps
- Network Storage: Support 802.1X
- Network Protocols: TCP/IP, UDP, HTTP, IGMP, ICMP, DHCP, RTP/RTSP, DNS, DDNS, FTP, NTP, PPPOE, UPNP, SMTP, SNMP
- Interface Protocol: ONVIF Profile S/API
- ROI: Support 4 fixed region for mainstream and sub stream separately
- Dimensions: 160.3 (L)\*63.4 (W)\*64.5 (H)mm



## BS-52011K

## BS-52012K

## BS-52013K



- Lens: 2.8mm      • Lens: 3.6mm      • Lens: 6mm
- Image Sensor: 2.0 MP 1/2.9" Progressive Scan CMOS
- Effective Pixels: 1920\*1080
- Min. illumination: Color: 0.01Lux @ (F1.2, AGC ON); 0 Lux with IR; B/W: 0.001Lux @ (F1.2,AGC ON); 0 Lux with IR
- IR Distance: 10 ~ 20m
- Video Compression: H.265/H.264
- Audio: G.711A/G.711Mu/G.726/G.726ASF
- Bite Rate: 32Kbps~8Mbps
- Interface Protocol: ONVIF Profile S/API
- ROI: Support 4 fixed region for mainstream and sub stream separately
- Dimension: 160.3 (L)\*63.4 (W)\*64.5 (H)mm

## BS-52T11K

## BS-52T12K

## BS-52T13K



- Lens: 2.8mm      • Lens: 3.6mm      • Lens: 6mm
- Image Sensor: 2.0 MP 1/2.9" Progressive Scan CMOS
- Effective Pixels: 1920\*1080
- Min. illumination: Color: 0.01Lux @ (F1.2, AGC ON); 0 Lux with IR; B/W: 0.001Lux @ (F1.2,AGC ON); 0 Lux with IR
- IR Distance: 10 ~ 20m
- Video Compression: H.265/H.264
- Audio: G.711A/G.711Mu/G.726/G.726ASF
- Bite Rate: 32Kbps~8Mbps
- Interface Protocol: ONVIF Profile S/API
- ROI: Support 4 fixed region for mainstream and sub stream separately
- Dimension: 160.3 (L)\*63.4 (W)\*64.5 (H)mm

## BS-54N11K

## BS-54N13K



- Lens: 2.8mm      • Lens: 3.6mm
- Image Sensor: 4.0 MP 1/2.9" Progressive Scan CMOS
- Effective Pixels: 2560\*1440
- Min. illumination: Color: 0.01Lux @ (F1.2, AGC ON); 0 Lux with IR; B/W: 0.001Lux @ (F1.2, AGC ON); 0 Lux with IR
- IR Distance: 10 ~ 20m
- Video Compression: H.265/H.264
- Audio: G.711A/G.711Mu/G.726/G.726ASF
- Bite Rate: 32Kbps~8Mbps
- Interface Protocol: ONVIF Profile S/API
- ROI: Support 4 fixed region for mainstream and sub stream separately
- Dimension: 160.3 (L)\*63.4 (W)\*64.5 (H)mm



### BL-52028L

- IR Range: 20-30m
- Image Sensor: 2.0 MP 1/2.9" Progressive Scan CMOS
- Effective Pixels: 1920\*1080
- Min. illumination: Color: 0.01Lux @ (F1.2, AGC ON); 0 Lux with IR; B/W: 0.001Lux @ (F1.2,AGC ON); 0 Lux with IR
- Lens: 2.8-12mm Motorized
- Video Compression: H.265/H.264
- Audio: G.711A/G.711Mu/G.726/G.726ASF
- Bite Rate: 32Kbps~8Mbps
- Interface Protocol: ONVIF Profile S/API
- ROI: Support 4 fixed region for mainstream and sub stream separately
- Dimension: 186.5 (L)\*71.7 (W)\*84 (H)mm

### BL-52038L

- IR Range: 30-50m



### BL-52T28L

- IR Range: 20-30m
- Image Sensor: 2.0 MP 1/2.8" Progressive Scan CMOS
- Effective Pixels: 1920\*1080
- Min. illumination: Color: 0.01Lux @ (F1.2, AGC ON); 0 Lux with IR; B/W: 0.001Lux @ (F1.2,AGC ON); 0 Lux with IR
- Lens: 2.8-12mm Motorized
- Video Compression: H.265/H.264
- Audio: G.711A/G.711Mu/G.726/G.726ASF
- Bite Rate: 32Kbps~8Mbps
- Interface Protocol: ONVIF Profile S/API
- ROI: Support 4 fixed region for mainstream and sub stream separately
- Dimension: 186.5 (L)\*71.7(W)\*84 (H)mm

### BL-52T38L

- IR Range: 30-50m



### BS-54N38L

- IR Range: 30-50m
- Image Sensor: 4.0 MP 1/2.9" Progressive Scan CMOS
- Effective Pixels: 2560\*1440
- Min. illumination: Color: 0.01Lux @ (F1.2, AGC ON); 0 Lux with IR; B/W: 0.001Lux @ (F1.2, AGC ON); 0 Lux with IR
- Lens: 2.8-12mm Motorized
- Video Compression: H.265/H.264
- Audio: G.711A/G.711Mu/G.726/G.726ASF
- Bite Rate: 32Kbps~8Mbps
- Interface Protocol: ONVIF Profile S/API
- ROI: Support 4 fixed region for mainstream and sub stream separately
- Dimension: 186.5 (L)\*71.7 (W)\*84 (H)mm

## IP Camera-Dome Camera

### DL-54N12B



- Image Sensor: 4.0 MP 1/3" Progressive Scan CMOS
- Effective Pixels: 2560\*1440
- Min. illumination:  
Color: 0.01Lux @ (F1.2, AGC ON); 0 Lux with IR;  
B/W: 0.001Lux @ (F1.2, AGC ON); 0 Lux with IR
- Lens: 3.6mm
- IR Range: 10-20m
- Resolution: 4MP (2560\*1440), 3MP (2048\*1520, 2304\*1296), 1080P (1920\*1080), 720P (1280 \* 720P), D1, CIF
- Horizontal FOV: 75°
- Video Compression: H.265/H.264
- Audio: G.711A/G.711Mu/G.726/G.726ASF
- Bite Rate: 32Kbps~8Mbps
- Network Storage: Support 802.1X
- Network Protocols: TCP/IP, UDP, HTTP, IGMP, ICMP, DHCP, RTP/RTSP, DNS, DDNS, FTP, NTP, PPPOE, UPNP, SMTP, SNMP
- Interface Protocol: ONVIF Profile S/API
- ROI: Support 4 fixed region for mainstream and sub stream separately
- Dimensions:  $\Phi$ 133.1\*104mm

### DL-54N26B

- Image Sensor: 4.0 MP 1/3" Progressive Scan CMOS
- Effective Pixels: 2560\*1440
- Min. illumination:  
Color: 0.01Lux @ (F1.2, AGC ON); 0 Lux with IR;  
B/W: 0.001Lux @ (F1.2, AGC ON); 0 Lux with IR
- Lens: 2.8-12mm Varifocal
- IR Range: 20-30m
- Resolution: 4MP (2560\*1440), 3MP (2048\*1520, 2304\*1296), 1080P (1920\*1080), 720P (1280 \* 720P), D1, CIF
- Horizontal FOV: 25°-91°
- Video Compression: H.265/H.264
- Audio: G.711A/G.711Mu/G.726/G.726ASF
- Bite Rate: 32Kbps~8Mbps
- Network Storage: Support 802.1X
- Network Protocols: TCP/IP, UDP, HTTP, IGMP, ICMP, DHCP, RTP/RTSP, DNS, DDNS, FTP, NTP, PPPOE, UPNP, SMTP, SNMP
- Interface Protocol: ONVIF Profile S/API
- ROI: Support 4 fixed region for mainstream and sub stream separately
- Dimensions:  $\Phi$ 133.1\*104mm





### DL-52O11B

• Lens: 2.8mm

### DL-52O12B

• Lens: 3.6mm

### DL-52O13B

• Lens: 6mm



- Image Sensor: 2.0 MP 1/2.9" Progressive Scan CMOS
- Effective Pixels: 1920\*1080
- Min. illumination: Color: 0.01Lux @ (F1.2, AGC ON); 0 Lux with IR; B/W: 0.001Lux @ (F1.2, AGC ON); 0 Lux with IR
- IR Range: 10-20m
- Video Compression: 4H.265/H.264
- Audio: G.711A/G.711Mu/G.726/G.726ASF
- Bite Rate: 32Kbps~8Mbps
- Interface Protocol: ONVIF Profile S/API
- ROI: Support 4 fixed region for mainstream and sub stream separately
- Dimensions: Φ133.1\*104mm

### DL-52T11B

• Lens: 2.8mm

### DL-52T12B

• Lens: 3.6mm

### DL-52T13B

• Lens: 6mm



- Image Sensor: 2.0 MP 1/2.8" Progressive Scan CMOS
- Effective Pixels: 1920\*1080
- Min. illumination: Color: 0.01Lux @ (F1.2, AGC ON); 0 Lux with IR; B/W: 0.001Lux @ (F1.2, AGC ON); 0 Lux with IR
- IR Range: 10-20m
- Video Compression: 4H.265/H.264
- Audio: G.711A/G.711Mu/G.726/G.726ASF
- Bite Rate: 32Kbps~8Mbps
- Interface Protocol: ONVIF Profile S/API
- ROI: Support 4 fixed region for mainstream and sub stream separately
- Dimensions: Φ133.1\*104mm

### DL-52O26B

• IR Range: 20-30m

### DL-52O36B

• IR Range: 30-50m



- Image Sensor: 2.0 MP 1/2.9" Progressive Scan CMOS
- Effective Pixels: 1920\*1080
- Min. illumination: Color: 0.01Lux @ (F1.2, AGC ON); 0 Lux with IR; B/W: 0.001Lux @ (F1.2, AGC ON); 0 Lux with IR
- Lens: 2.8-12mm Varifocal
- Video Compression: 4H.265/H.264
- Audio: G.711A/G.711Mu/G.726/G.726ASF
- Bite Rate: 32Kbps~8Mbps
- Interface Protocol: ONVIF Profile S/API
- ROI: Support 4 fixed region for mainstream and sub stream separately
- Dimensions: Φ133.1\*104mm

### DL-52O28B

• IR Range: 20-30m

### DL-52O38B

• IR Range: 30-50m



- Image Sensor: 2.0 MP 1/2.8" Progressive Scan CMOS
- Effective Pixels: 1920\*1080
- Min. illumination: Color: 0.01Lux @ (F1.2, AGC ON); 0 Lux with IR; B/W: 0.001Lux @ (F1.2, AGC ON); 0 Lux with IR
- Lens: 2.8-12mm Motorized
- Video Compression: 4H.265/H.264
- Audio: G.711A/G.711Mu/G.726/G.726ASF
- Bite Rate: 32Kbps~8Mbps
- Interface Protocol: ONVIF Profile S/API
- ROI: Support 4 fixed region for mainstream and sub stream separately
- Dimensions: Φ133.1\*104mm



## DL-52T26B

- IR Range: 20-30m



- Image Sensor: 2.0 MP 1/2.8" Progressive Scan CMOS
- Effective Pixels: 1920\*1080
- Min. illumination: Color: 0.01Lux @ (F1.2, AGC ON); 0 Lux with IR; B/W: 0.001Lux @ (F1.2, AGC ON); 0 Lux with IR
- Lens: 2.8-12mm Varifocal
- Video Compression: 4H.265/H.264

## DL-52T36B

- IR Range: 30-50m

- Audio: G.711A/G.711Mu/G.726/G.726ASF
- Bite Rate: 32Kbps~8Mbps
- Interface Protocol: ONVIF Profile S/API
- ROI: Support 4 fixed region for mainstream and sub stream separately
- Dimensions: Φ133.1\*104mm

## DL-52T28B

- IR Range: 20-30m



- Image Sensor: 2.0 MP 1/2.8" Progressive Scan CMOS
- Effective Pixels: 1920\*1080
- Min. illumination: Color: 0.01Lux @ (F1.2, AGC ON); 0 Lux with IR; B/W: 0.001Lux @ (F1.2, AGC ON); 0 Lux with IR
- Lens: 2.8-12mm Motorized
- Video Compression: 4H.265/H.264

## DL-52T38B

- IR Range: 30-50m

- Audio: G.711A/G.711Mu/G.726/G.726ASF
- Bite Rate: 32Kbps~8Mbps
- Interface Protocol: ONVIF Profile S/API
- ROI: Support 4 fixed region for mainstream and sub stream separately
- Dimensions: Φ133.1\*104mm

## DL-54N11B

- Lens: 2.8mm



- Image Sensor: 4.0 MP 1/2.9" Progressive Scan CMOS
- Effective Pixels: 2560\*1440
- Min. illumination: Color: 0.01Lux @ (F1.2, AGC ON); 0 Lux with IR; B/W: 0.001Lux @ (F1.2, AGC ON); 0 Lux with IR
- IR Range: 10 ~ 20m
- Video Compression: 4H.265/H.264

## DL-54N13B

- Lens: 3.6mm

- Audio: G.711A/G.711Mu/G.726/G.726ASF
- Bite Rate: 32Kbps~8Mbps
- Interface Protocol: ONVIF Profile S/API
- ROI: Support 4 fixed region for mainstream and sub stream separately
- Dimensions: Φ133.1\*104mm

## DL-52O28B

- IR Range: 20-30m
- Lens: 2.8-12mm Varifocal



- Image Sensor: 2.0 MP 1/2.8" Progressive Scan CMOS
- Effective Pixels: 1920\*1080
- Min. illumination: Color: 0.01Lux @ (F1.2, AGC ON); 0 Lux with IR; B/W: 0.001Lux @ (F1.2, AGC ON); 0 Lux with IR
- Lens: 2.8-12mm Motorized
- Video Compression: 4H.265/H.264

## DL-52O38B

- IR Range: 30-50m
- Lens: 2.8-12mm Motorized

- Audio: G.711A/G.711Mu/G.726/G.726ASF
- Bite Rate: 32Kbps~8Mbps
- Interface Protocol: ONVIF Profile S/API
- ROI: Support 4 fixed region for mainstream and sub stream separately
- Dimensions: Φ133.1\*104mm

## ↘ DVR-All-in-One DVR



### Z304XE-P

- Live View: 4CH
- Record: HD Analog: 4CH\*5MP@11fps(AHD); 4CH\*4MP@15fps (AHD); 4CH\*3MP@18fps(AHD); 4CH\*1080P@25fps (AHD/TVI)
- Video Output: 1CH VGA, 1\*HDMI 2K

- Compression: H.264+
- Audio Input: 4/1 I/O
- Two-way Talk: Yes
- Search Mode : Time/Calendar/Event/Channel
- Playback: 4CH
- HDD: 1 SATA, up to 8TB
- Network Interface: RJ45 1\*10/100Mbps Ethernet port
- USB Interface: 2\*USB 2.0
- Protocol: TCP/IP,DHCP, FTP, DNS, DDNS, NTP, UPNP
- Power Supply: 12V/2A
- Weight: 1KG
- Dimensions: 255mm(L)\* 236mm(W)\* 44mm(H)

### Z308XE-P

- Live View: 8CH
- Record: HD Analog: 8CH\*5MP@11fps(AHD); 8CH\*4MP@15fps (AHD); 8CH\*3MP@18fps(AHD); 8CH\*1080P@25fps (AHD/TVI)
- Video Output: 1CH VGA, 1\*HDMI 4K



### Z308XF-P

- Record: HD Analog: 8CH\*5MP@11fps(AHD); 8CH\*4MP@15fps (AHD); 8CH\*3MP@18fps(AHD); 8CH\*1080P@25fps (AHD/TVI)
- Video Output: 8/1 I/O
- USB Interface: 3\*USB 2.0
- Live View: 8CH
- Playback: 4CH

- Compression: H.264+
- Video Output: 1CH VGA, 1\*HDMI 4K
- Two-way Talk: Yes
- Search Mode : Time/Calendar/Event/Channel
- HDD: 2 SATA, up to 8TB
- Network Interface: RJ45 1\*10/100Mbps Ethernet port
- Protocol: TCP/IP,DHCP, FTP, DNS, DDNS, NTP, UPNP
- Power Supply: 12V/2A
- Weight: 1.8KG
- Dimensions: 350mm(L)\* 296mm(W)\* 44mm(H)

### Z316XF-P

- Record: HD Analog: 16CH\*5MP@11fps(AHD); 16CH\*4MP@15fps (AHD); 16CH\*3MP@18fps(AHD); 16CH\*1080P@25fps (AHD/TVI)
- Video Output: 4/1 I/O
- USB Interface: 2\*USB 2.0
- Live View: 16CH
- Playback: 8CH



### Z316XH-P

- Record: HD Analog: 16CH\*5MP@11fps(AHD); 16CH\*4MP@15fps (AHD); 16CH\*3MP@18fps(AHD); 16CH\*1080P@25fps (AHD/TVI)
- Video Output: 16/1 I/O
- USB Interface: 2\*USB 2.0
- Weight: 1.8KG
- Live View: 16CH
- Playback: 8CH
- Compression: H.264+

- Video Output: 1CH VGA, 1\*HDMI 4K
- Two-way Talk: Yes
- Search Mode: Time/Calendar/Event/Channel
- HDD: 2 SATA, up to 8TB
- Network Interface: RJ45 1\*10/100Mbps Ethernet port
- Protocol: TCP/IP,DHCP, FTP, DNS, DDNS, NTP, UPNP
- Power Supply: 12V/2A
- Dimensions: 350mm(L)\* 296mm(W)\* 44mm(H)



## Z304XE-CL

- Live View: 4CH
- Record: 4CH\*1080N; 4CH\*720P @12fps; 4CH\*960H
- Audio Input: 4/1
- Playback: 4CH

## Z308XE-CL

- Live View: 8CH
- Record: 8CH\*1080N @12fps
- Audio Input: 4/1
- Playback: 8CH

## Z316XE-CL

- Live View: 16CH
- Record: 16CH\*1080N @12fps
- Audio Input: 2/1
- Playback: 16CH



- Compression: H.264
- Video Output: 1\*VGA, 1\*HDMI 1080P
- Network Interface: RJ45 1\*10/100Mbps Ethernet port

- Two-way Talk: Yes
- HDD: 1SATA, up to 8TB
- Power Supply : 12V/2A
- Dimensions: 255mm(L)\* 236mm(W)\* 44mm(H)

## Z304XE-C

- Live View: 4CH
- Record: 4CH\*1080P @12fp
- Audio Input: 4/1
- Playback: 4CH

## Z308XE-C

- Live View: 8CH
- Record: 8CH\*1080P@12fps; 8CH\*1080N
- Audio Input: 4/1
- Playback: 8CH

## Z316XE-C

- Live View: 16CH
- Record: 16CH\*1080P @12fps; 8CH\*1080P; 16CH\*1080N
- Audio Input: 2/1
- Playback: 16CH



- Compression: H.264
- Video Output: 1\*VGA, 1\*HDMI 1080P
- Network Interface: RJ45 1\*10/100Mbps Ethernet port

- Two-way Talk: Yes
- HDD: 1SATA, up to 8TB
- Power Supply : 12V/2A
- Dimensions: 255mm(L)\* 236mm(W)\* 44mm(H)

## Z332XH-CL

- Playback: 16CH
- HDD: 8 SATA, up to 8TB/ bay
- Power Supply: ATX
- Dimensions: 443mm\* 427mm\* 92mm(L\*W\*H)

## Z332XM-CL

- Playback: 8CH
- HDD: 4 SATA, up to 8TB/ bay
- Power Supply: 12V/6A
- Dimensions: 440mm\* 400mm\* 60mm(L\*W\*H)



- Compression: H.264
- Live View: 32CH
- Record: 32CH\*1080N@12fps
- Video Output: 1\*VGA, 1\*HDMI 1080P

- Audio Input: 16/1
- Two-way Talk: Yes
- Network Interface: RJ45 1\*10/100Mbps Ethernet port

## Z316XF-C

- Compression: H.264
- Live View: 16CH
- Record: 16CH\*1080P@12fps; 8CH\*1080P; 16CH\*1080N
- Video Output: 1\*VGA, 1\*HDMI 1080P
- Power Supply: 12V/4A

- Audio Input: 6/1
- Two-way Talk: Yes
- Playback: 16CH
- HDD: 2SATA, up to 8TB/bay
- Network Interface: RJ45 1\*10/100Mbps Ethernet port
- Dimensions: 350mm\* 296mm\* 44mm(L\*W\*H)





## Z504NER-4P

- Live View: 4CH
- Incoming Bandwidth: 48Mbps
- Playback: 4CH
- PoE: 4CH 10/100 Mbps self-adaptive Ethernet
- PoE Power: ≤45W
- Power Supply: DC 48V1.35A

## Z508NER-4P

- Live View: 8CH
- Incoming Bandwidth: 60Mbps
- Playback: 8CH
- PoE: 8CH 10/100 Mbps self-adaptive Ethernet
- PoE Power: ≤68W
- Power Supply: DC 48V1.875A

- Video Compression: H.265/H.264
- Video Output: 1CH VGA, 1CH 4K/1080P HDMI
- Audio Compression: G.711a
- Intercom: 1CH, two way talk
- HDD: 1\*HDD, up to 8TB
- Network Interface: RJ45 10M/100M adaptive ethernet interface
- USB Port: 1 USB 2.0, 1 USB 3.0
- Weight: 1.7KG
- Dimensions: 215\*235\*45mm



- Video Compression: H.265/H.264
- Video Output: 1CH VGA, 2CH 4K/1080P HDMI
- Incoming Bandwidth: 192Mbps
- Playback: 16CH
- Audio Compression: G.711a
- Intercom: 1CH, two way talk
- HDD: 2\*HDD, up to 8TB/bay
- Network Interface: 1xSATA(Max. 6TB)  
USB port: 1\*RJ45 10M/100M/1000M self-adaptive Ethernet
- PoE: 16CH 10M/100 M/1000M self-adaptive Ethernet
- PoE Power: ≥180W
- Power Supply: 110V~220V±10%
- Weight: 3KG
- Dimensions: 360\*311\*48mm

## Z516NFR-16P

- Live View: 16CH

## Z532NFR-16P

- Live View: 32CH



### Z504NER

- Live View: 4CH
- Incoming Bandwidth: 48Mbps
- Playback: 4CH

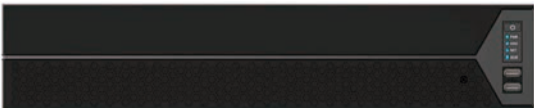
### Z508NER

- Live View: 8CH
- Incoming Bandwidth: 60Mbps
- Playback: 8CH

### Z516NER

- Live View: 16CH
- Incoming Bandwidth: 80Mbps
- Playback: 16CH

- Video Compression: H.265/H.264
- Video Output: 1\*VGA, 2\*HDMI 4K/1080P output
- Audio Compression: G.711a
- Intercom: 1CH, two way talk
- HDD: 1\*HDD, up to 8TB
- USB Port: 1 USB 2.0, 1 USB 3.0
- PoE: N/A
- Dimensions: 215\*235\*45mm



### Z516NHR

- Live View: 4CH
- Incoming Bandwidth: 48Mbps
- Playback: 4CH

### Z532NHR

- Live View: 8CH
- Incoming Bandwidth: 60Mbps
- Playback: 8CH

### Z564NHR

- Live View: 16CH
- Incoming Bandwidth: 80Mbps
- Playback: 16CH

- Video Compression: H.265/H.264
- Video Output: 1\*VGA, 2\*HDMI 4K/1080P output
- Audio Compression: G.711a
- Intercom: 1CH, two way talk
- HDD: 1\*HDD, up to 8TB
- USB Port: 1 USB 2.0, 1 USB 3.0
- PoE: N/A
- Dimensions: 215\*235\*45mm



### Z532NTR

- Live View: 32CH
- Incoming Bandwidth: 200Mbps

### Z564NTR

- Live View: 64CH
- Incoming Bandwidth: 256Mbps

- Video Compression: H.265/H.264
- Video Output: 1\*VGA, 2\*HDMI 4K/1080P output
- Audio Compression: G.711a
- Intercom: 1CH, two way talk
- HDD: 16\*HDD, up to 8TB
- USB Port: 2 USB 2.0, 1 USB 3.0
- Playback: 32CH
- PoE: N/A
- Dimensions: 437\*483\*143mm

## Smart Locks

Smart lock is an electromechanical lock which allows you to open and lock your doors with a virtual key of fingerprint, face, code, RFID card, putting an end to problem of lost keys and enabling an array of intelligent and useful features. In 2006, ZKTeco started to step into the smartlock Industry, with its cutting edge biometric technology to provide security and convenience for home and office.



# ZKBioBT

ZKBioBT is a creative APP for iOS platform and Android platform which allows you to unlock doors and manage users by mobile phones.



## Features

- Doors unlocking
- With ZKBioBT App, your mobile phone is your key
- Lock transaction check
- Flexible open-door duration setting
- User Management
- Delete individual user or all users
- Edit user information including name, ID and privileges



ZKBioBT APP Download  
For iOS Platform



ZKBioBT APP Download  
For Android Platform

## Specifications

Supporting iPhones	iPhone4S/iPhone5/iPhone5S/iPhone5C/ iPhone6/iPhone6 plus/iPhone6S
iOS OS Requirement	7.0 and Above
Android OS Requirement	4.3 and Above
Supporting Device Models	ML10B, PL10B, ML10DB, PL10DB
Bluetooth Requirement	Bluetooth 4.0
Compatibility	Support Terminal Screen Self-Adaption for Smart Phone
Tested Android Phones	Nexus 5.0, Samsung Galaxy S4, Samsung Galaxy Note 3, HTC-ONEX, and Huawei Honor

## Office Lock

### ML10 Series



Black

Champagne Gold

### PL10 Series



Silver



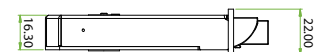
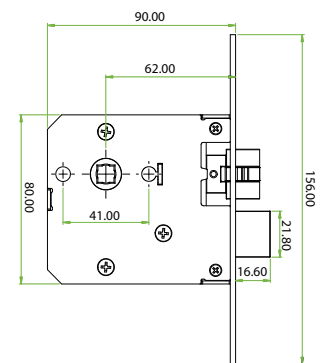
#### Features:

- Support fingerprint/ card/ mobile phone/ key
- 125khz ID card reader is optional
- BLE4.0 bluetooth is optional
- American standard single latch with adjustable backset (ML10/PL10)
- German standard mortise with one latch and one deadbolt (ML10D/PL10D)

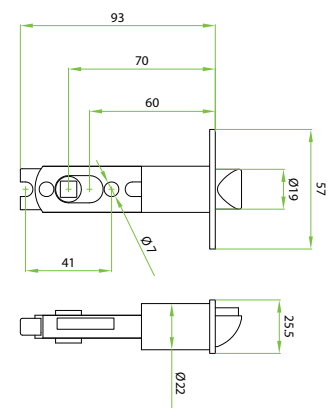
#### Specifications

Material	ML10 Series - Zinc Alloy PL10 Series - Rugged ABS
User Capacity	Admin - 10 Normal User - 60 Temporary User - 20
Operating Temperature	-20°C - 55°C
Batteries	4 x AA Alkaline Battery
Battery Life	Over 6000 Times (Above 1 year)
Door Thickness	30-38 mm (Optional) 39-54 mm (Standard) 55-60 mm (Optional)
Dimensions	Front - 69(W)×155(L)×35(D) mm Back - 69(W)×155(L)×25(D) mm

#### German Standard Mortise



#### American Standard Single Latch



# L7000 Series



Black

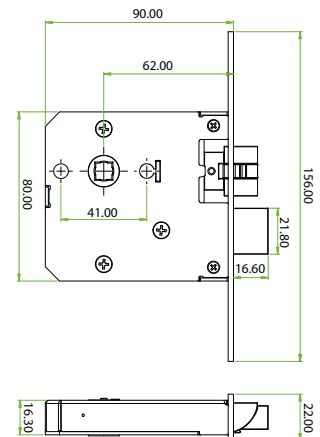
Silver



## Features:

- Support fingerprint/ password/ key
- OLED display screen with visual menu
- DIY design for easy installation and quick operation
- Support query door open logs
- American standard single latch with adjustable backset (L7000)
- German standard mortise with one latch and one deadbolt (L7000S)

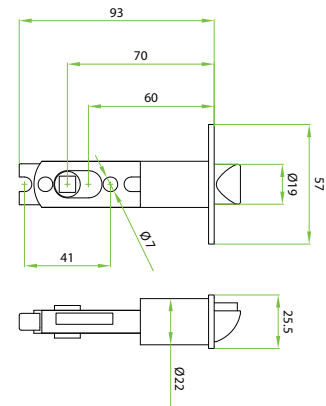
German Standard Mortise



## Specifications

Material	Zinc Alloy
Capacity	Fingerprint - 500/ Password -100
Operating Temperature	-10°C - 55°C
Batteries	4 x AA Alkaline Battery
Battery Life	Over 3000 Times (Approx 1 year)
Door Thickness	35-55 mm (Standard) 55-75 mm (Optional)
Dimensions	Front - 72(W)×185(L)×69(D) mm Back - 72(W)×185(L)×30(D) mm

American Standard Single Latch





## Main Door Lock

### TL200 Series



Antique Copper



Dull Nickel



Champagne Gold

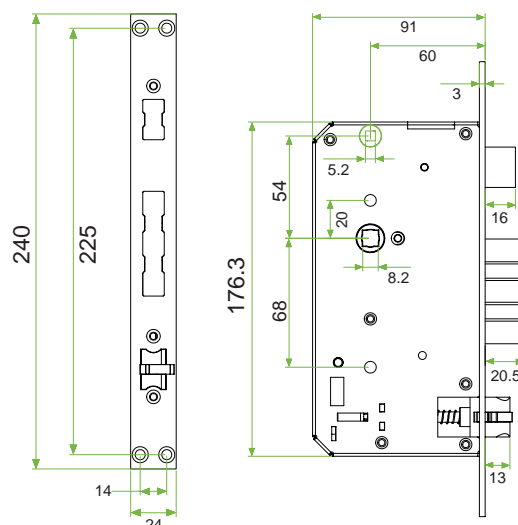


#### Features:

- Support fingerprint/ card/ password/ mobile phone/ key
- With voice guide feature for easy and quick operations
- Reversible design to fit for all door open direction
- 125khz ID card reader is standard
- 13.56mhz Mifare card reader is optional
- Remote open door is optional
- BLE4.0 bluetooth is optional

#### Specifications

Material	Zinc Alloy
Capacity	Fingerprint/Password/Card -100
Operating Temperature	-20°C - 55°C
Batteries	8 x AA Alkaline Battery
Battery Life	Over 8000 Times (Above 1 year)
Door Thickness	35-90 mm
Dimensions	Front - 75(W)×360(L)×36(D) mm Back - 75(W)×360(L)×36(D) mm



## TL100 Series

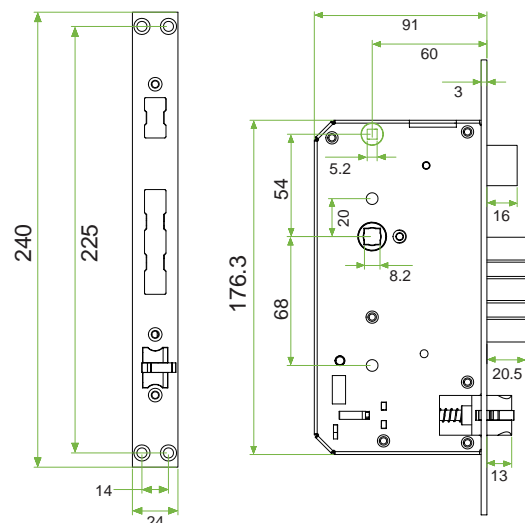


### Features:

- Support Fingerprint/ Card/ Password/ Key
- With Voice-guided Feature for Easy and Quick Operations
- Reversible Design to Fit for all Door Open Direction
- 125khz ID Card Reader is Standard
- Remote open door is optional

### Specifications

Material	Zinc Alloy
Capacity	Fingerprint/Card - 100; Password - 2
Operating Temperature	-20°C - 55°C
Batteries	8 x AA Alkaline Battery
Battery Life	Over 8000 Times (Above 1 year)
Door Thickness	35 - 90 mm
Dimensions	Front - 78(W)×340(L)×31(D) mm Back - 78(W)×340(L)×27(D) mm



## FL1000-Face Door Lock



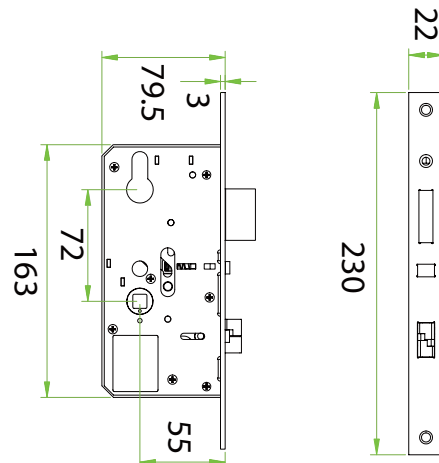
Silver

Gold



### Features:

- Support Face/ Card/ Password/ Key
- Capacitive Touch Screen With Visual Icon Menu
- 125khz ID Card Reader is Optional
- 13.56mhz Mifare Card Reader is Optional
- Remote Open Door is Optional



### Specifications

Material	Zinc Alloy
Capacity	Face/Password/Card -100
Operating Temperature	0°C - 55°C
Batteries	8 x AA Alkaline Battery
Battery Life	Over 5000 Times (Approx 1 year)
Door Thickness	35-50 mm (Standard) 50-80 mm (Optional)
Dimensions	Front - 74(W)x327(L)x58(D) mm Back - 74(W)x327(L)x40(D) mm

## L4000/L5000

L4000

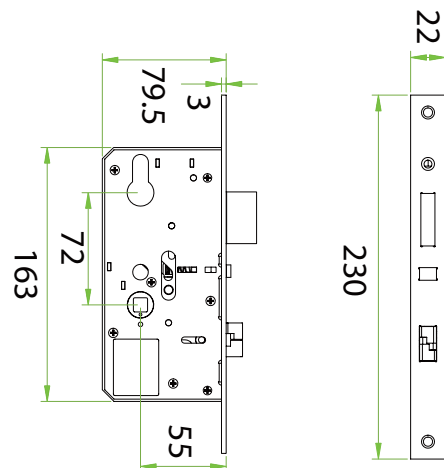


4 Colors Available:  
Black, White, Grey, Blue

L5000



4 Colors Available:  
Black, Blue, Grey, Red



### Features:

- Support Fingerprint/ Password/ Card/ Key
- OLED Display Screen with Visual Menu
- 125khz ID Card Reader is Optional
- 13.56mhz Mifare Card Reader is Optional
- Remote Open Door is Optional

### Specifications

Material	Zinc Alloy
Capacity	Fingerprint/Card - 500; Password -100
Operating Temperature	-20°C - 55°C
Batteries	4 x AA Alkaline Battery
Battery Life	Over 3000 Times (Approx 1 year)
Door Thickness	35-50 mm (Standard) 50-80 mm (Optional)
L4000 Dimensions	Front - 77.5(W)x312.8(L)x38.5(D) mm Back - 77.5(W)x312.8(L)x38.5(D) mm
L5000 Dimensions	Front - 72(W)x310(L)x34(D) mm Back - 72(W)x310(L)x30(D) mm

## Bluetooth Lock



»» AL10B

### Features:

- Various Access For Your Convenience - Card/PIN /Key /Mobile Phone
- BLE 4.0, Works With ZKBioBL APP
- Voice guidance for easy operation
- Reversible Design To Accommodate All Door Open Directions
- External Terminals To Draw Back-up Power From A 9V Battery
- Smart Alarm For Low Battery And Illegal Operation
- American Standard Single Latch With Adjustable Backset (60 or 70mm)

Material	Zinc Alloy
Capacity	Pin/Card -100
Power Supply	4xAA Alkaline battery (NOT supplied)
Battery Life	over 6,000 times (about 1 year)
Color Options	Sliver
Door Thickness	30-54 mm



### Features:

- Various Access For Your Convenience - Card/PIN/Key/Mobile Phone
- BLE 4.0, Works With ZKBioBL APP
- DIY Design To Provide Easy Installation
- Reversible Design To Accommodate All Door Open Directions
- External Terminals To Draw Back-up Power From A 9V Battery
- Smart Alarm For Low Battery And Illegal Operation
- German Standard Mortise With Double Latches

Material	Zinc Alloy
Capacity	PIN/Card -100
Power Supply	4xAA Alkaline battery (NOT supplied)
Battery Life	over 6,000 times (about 1 year)
Color Options	Sliver
Door Thickness	30-54 mm



»» AL10DB



### Features:

- Various Access For Your Convenience - Fingerprint/PIN/Key/Mobile Phone
- BLE 4.0, Works With ZKBioBL APP
- DIY Design To Provide Easy Installation
- Reversible Design To Accommodate All Door Open Directions
- External Terminals To Draw Back-up Power From A 9V Battery
- Smart Alarm For Low Battery And Illegal Operation
- American Standard Single Latch With Adjustable Backset (60 or 70mm)



»» AL20B

Material	Zinc Alloy
Capacity	Fingerprint/Pin -100
Power Supply	4xAA Alkaline battery (NOT supplied)
Battery Life	Above 1 year
Color Options	Sliver
Door Thickness	30-54 mm



### Features:

- Various Access For Your Convenience - Fingerprint/PIN /Key/Mobile Phone
- BLE 4.0, Works With ZKBioBL APP
- Vioce guidance for easy operation
- Reversible Design To Accommodate All Door Open Directions
- External Terminals To Draw Back-up Power From A 9V Battery
- Smart Alarm For Low Battery And illegal Operation
- German Standard mortise with double latch



»» AL20DB

Material	Zinc Alloy
Capacity	Fingerprint/Pin -100
Power Supply	4xAA Alkaline battery (NOT supplied)
Battery Life	Above 1 year
Color Options	Sliver
Door Thickness	30-54 mm



»» DL30B

Features:

- Various Access For Your Convenience - Card/PIN /Key /Mobile Phone
- BLE 4.0, Works With ZKBioBL APP
- Voice guidance for easy operation
- Reversible Design To Accommodate All Door Open Directions
- External Terminals To Draw Back-up Power From A 9V Battery
- Smart Alarm For Low Battery And illegal Operation
- American Standard Single Latch With Adjustable Backset (60 or 70mm)

Material	Zinc Alloy
Capacity	Pin/Card -100
Power Supply	4xAA Alkaline battery (NOT supplied)
Battery Life	Above 1 year
Color Options	Sliver
Door Thickness	30-54 mm



Features:

- Various Access For Your Convenience - Card/PIN/Key/Mobile Phone
- BLE 4.0, Works With ZKBioBL APP
- DIY Design To Provide Easy Installation
- Reversible Design To Accommodate All Door Open Directions
- External Terminals To Draw Back-up Power From A 9V Battery
- Smart Alarm For Low Battery And illegal Operation
- German Standard mortise with double latch

Material	Zinc Alloy
Capacity	PIN/Card -100
Power Supply	4xAA Alkaline battery (NOT supplied)
Battery Life	Above 1 year
Color Options	Sliver
Door Thickness	30-54 mm
Optional Functions	MF card



»» DL30DB



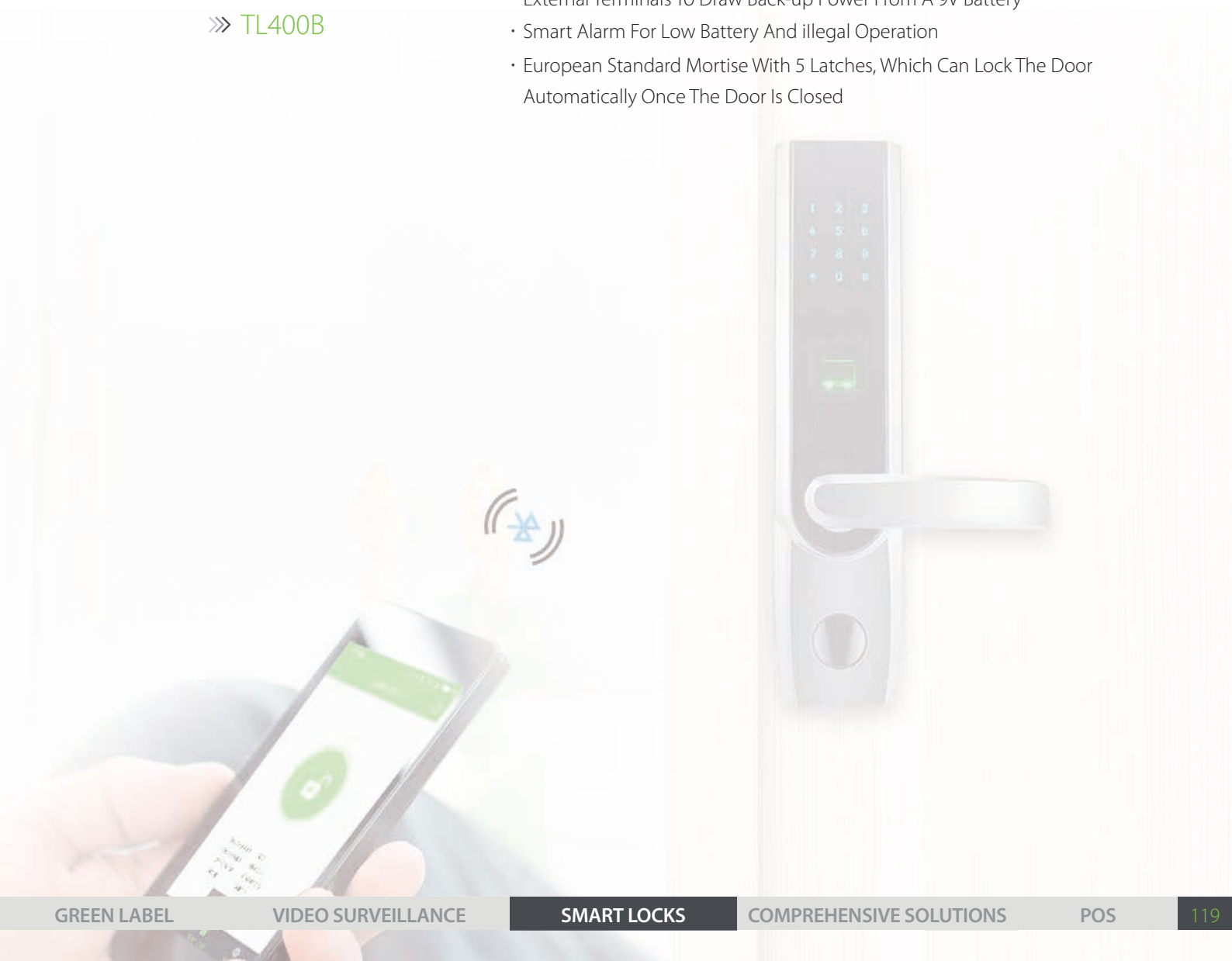
## Features:



»» TL400B

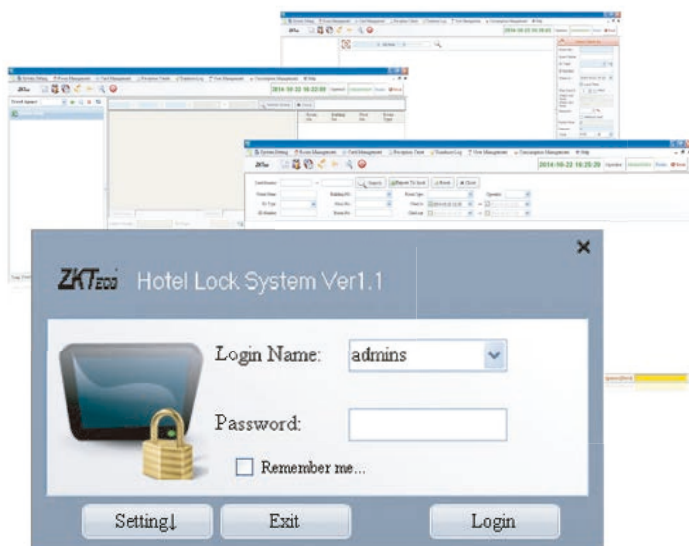
Material	Zinc Alloy
Capacity	Fingerprint/PIN/Card -100
Power Supply	4xAA Alkaline battery (NOT supplied)
Battery Life	Above 1 year
Color Options	Sliver
Door Thickness	35-54 mm
Optional Functions	MF card

- Various Access For Your Convenience - Card/PIN/Key/ Mobile Phone/Fingerprint
- BLE 4.0, Works With ZKBioBL APP
- Voice guidance for easy operation
- External Terminals To Draw Back-up Power From A 9V Battery
- Smart Alarm For Low Battery And illegal Operation
- European Standard Mortise With 5 Latches, Which Can Lock The Door Automatically Once The Door Is Closed



# ZKBiolock Hotel Lock System

ZKBiolock Hotel Lock System is specially designed to meet the needs of small-medium hotels, maximum security, individual style and low operation costs. It allows comprehensive access control and system management, and offers you an easy "one-click Installation."

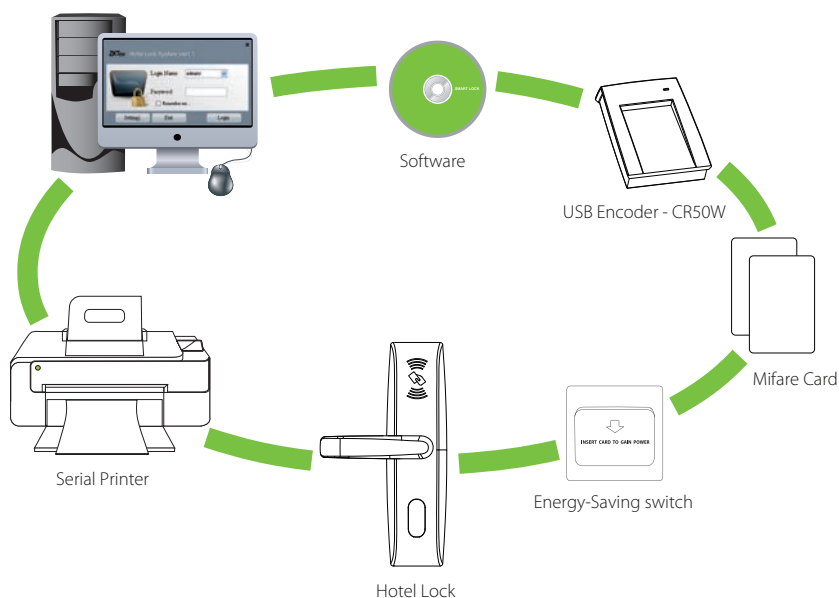


## Features:

- Matrix Design Allows You to See The Room Status
- Check-in, Check-out and Reservation for Hotel Guests
- Create Master, Building, Floor and Other Employee Cards
- Create Lost Cards to Remove Lost/stolen Cards From The System
- Create Record Cards To Get The Unlock logs From The Hotel Locks

## Specifications:

Operating System	Microsoft Windows XP SP3, Windows Vista/7/8/10 (32/64)
Database	Microsoft SQL Server 2005 or more advanced
CPU	Pentium Dual-CoreProcessor or above
PC Memory	1G or above
Encoder	USB encoder - CR50W
Languages	English/ Spanish/ Arabic/ French/ Russian/ Thai/ Chinese





## Hotel Door Lock

Hotel locks are equipped with the advanced 13.56Mhz Mifare-1 card technology, which has the ability of reading and writing to guest and employee cards. The included lock management software offers you an easy “one-click” installation, what you need is to click next.

### Features

- With Advanced 13.56mhz Mifare-1 Card Technology
- American Standard Mortise with 5 Latches
- With Professional Hotel Lock Management Software - Single Click Install
- Require USB Encoder to Program Mifare Cards
- Audit Trail Records the Latest 224 Lock Transactions
- With Warning Beeps in Low Battery Status

### Specifications:

Material	Zinc Alloy - LH1600/LH3600/LH4000/LH5000 Stainless Steel - LH1000/LH2600/LH3000
Card Type	ISO14443 (RFID) Type-A, S70 4KB/ S50 1KB
Card Reader	USB Encoder - CR50W (Sold Separately)
Software	ZKBiolock Hotel Lock System
Operating Temperature	0°C - 45°C
Batteries	4 x AA Alkaline battery
Door Thickness	35-55 mm

LH4000

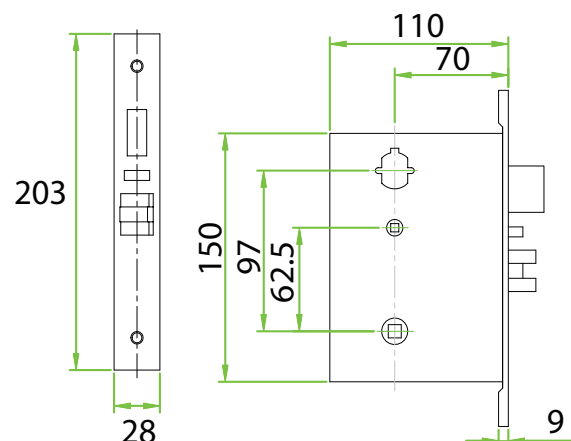


Champagne Gold

LH5000



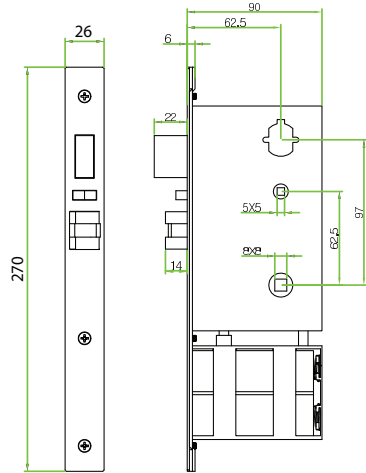
Champagne Gold



### LH3000



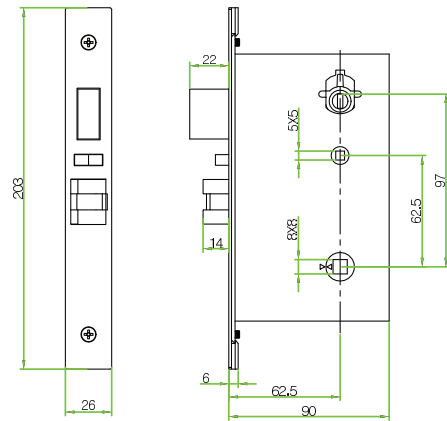
Silver



### LH3600



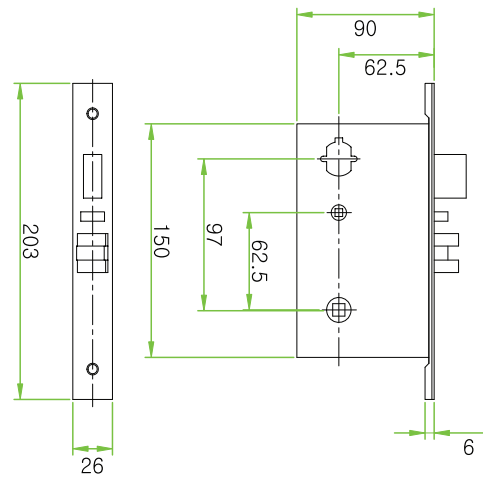
2 Colors Available:  
Silver & Gold



### LH1000



2 Colors Available:  
Silver & Gold



## ↳ Accessory

Features:

- Working Voltage: 110V~220V Vac. Tolerance 10%
- Max. Load Current: 30A
- Static Power Consumption: 1 W
- Delay Time: 12 s
- Card Type: ISO14443 Type-A,S70 4KB/S50 1KB Mifare Cards
- Material: Fireproof PC Material
- Dimensions: 86\*86\*44 mm



»» Energy Saving Switch Mifare

Features:

- Working Voltage: 110V~220V Vac. Tolerance 10%
- Max. Load Current: 30A
- Static Power Consumption: 1 W
- Delay Time: 15 s
- Card Type: Any Type
- Material: Fireproof PC Material
- Dimensions: 86\*86\*44 mm



»» Energy Saving Switch General Type

Features:

- Provide Accurate And Fast Mifare Card Encoding
- Plug and Play

Interface	USB Host 2.0
Working Voltage	USB power of DC 5V
Static Current	65 mA
Working Current	80 mA
Working Temperature	-10 °C ~ 70 °C
Card Type	ISO14443 Type-A,S70 4KB/S50 1KB Mifare Cards
Dimensions	111*81*26.6 mm



»» CR60W

# COMPREHENSIVE SOLUTIONS

At ZKTeco we continually strive on improving technology that does just that, making you feel safer at all times, in offering global security solutions in collaboration with leading companies from different, yet related sectors.





# OPERA SERIES



## OP-200 Fingerprint Reader

Adaptable Biometric Reader for Lenel and Amag customers



### OnGuard Integration:

OP200 firmware communicates directly with OnGuard and Symmetry. Automatically synchronizes needed customer user data. Eliminates needs for middleware. Eliminates needs to manually create users in the biometric readers.



### Biometric Performance:

Advanced SilkID fingerprint recognition technology delivers optimal accuracy, matching speed and powerful fake finger detection.



### Auto Data Synchronization:

Multiple OP200s automatically synchronizes fingerprint templates. Eliminates needs for middleware. Eliminates needs to separately manage templates.



### Communication:

Wiegand-Out to Lenel access control panel Wiegand-In for connecting optional 3rd party card readers TCP/IP and RS232/485 data communication USB for offline data management



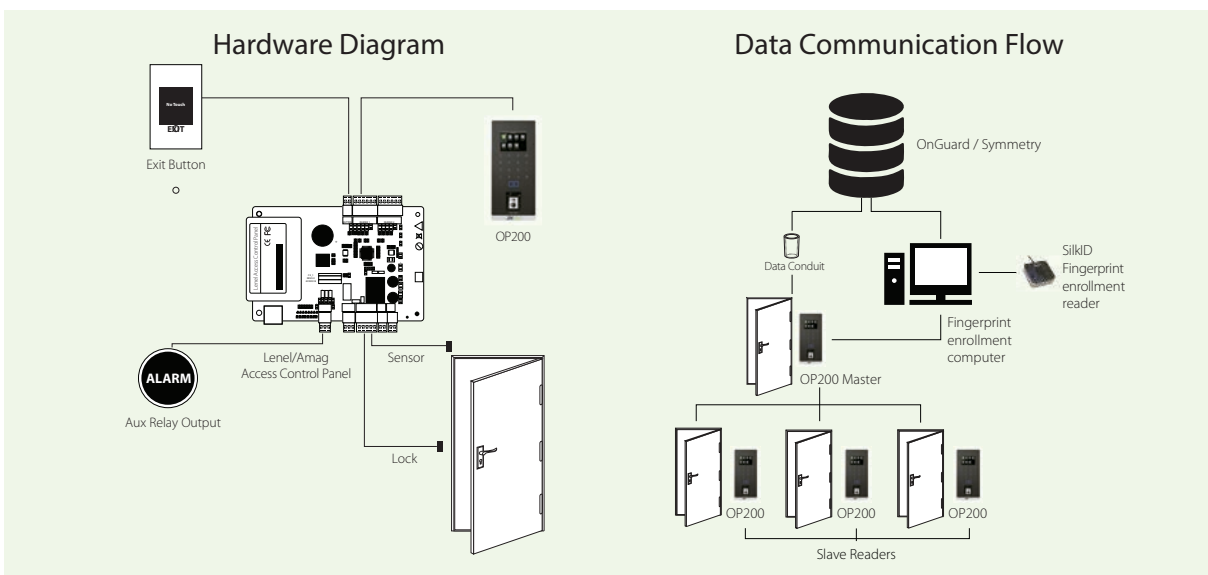
### Authentication Options: (single or multi-factor)

- ✓ Fingerprint
- ✓ RFID (HID, Mifare, Desfire)
- ✓ Password



### Capacity:

- 3,000 Fingerprint templates
- 30,000 cards
- 100,000 transactions



ZKAccess is a member of the Lenel OpenAccess Alliance Program (OAAP) since 2016. Lenel and OnGuard are registered trademarks of United Technologies Corp.

Authentication Options: (Single or Multi-factor) ✓ Fingerprint ✓ RFID (HID, Mifare, Desfire) ✓ Password ✓

## ZKProto SAP

### Human Resources Management Solution

ZKTeco presents its latest HHRR Management Solution based on ZKTeco's Data Collection System integrated with SAP.

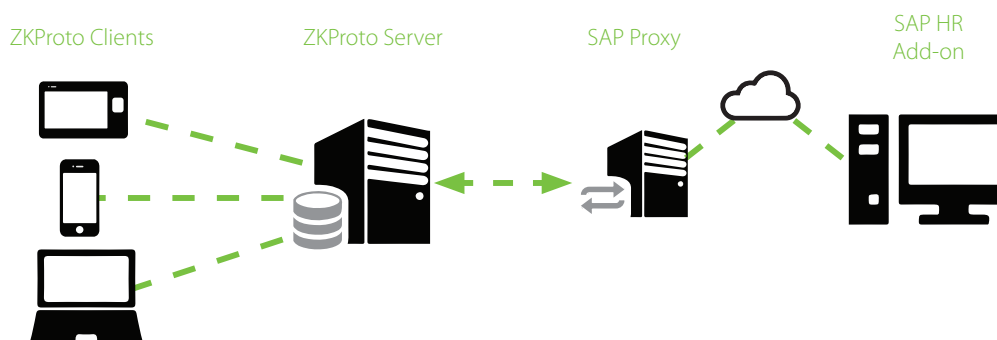
The core of the system is ZKProto, a reliable, fast, modern, secure and flexible communication protocol based on the concepts of middleware and RPC (Remote Procedure Call).



The middleware (in case of ZKProto we use Apache Thrift) takes care of all the raw communication aspects, like sockets and everything related to TCP/IP stack.

The RPC part refers to the ability to call remote procedures/methods/functions like they were local. ZKProto is a centralized protocol as shown in the above diagram, which means the clients never actually connect between themselves but all the communication is done through the server.

The sole and unique purpose of the server is to replicate data (if needed) and resolve any data conflicts that might arise.



### Biopad Android

- Capacitive 7 inch touchscreen
- Android 4.1
- Algorithm version: ZKFinger 10.0
- Fingerprint Capacity: 6.000(1: N)
- Log Capacity: 200.000.
- Internal battery
- RFID Proximity reader.
- Communications: TCP/IP, Wi-Fi/USB Host
- Optional: Wireless LAN, GPRS, 3G,
- Built-in Battery, ID/MF, Relay, SD Card Slot

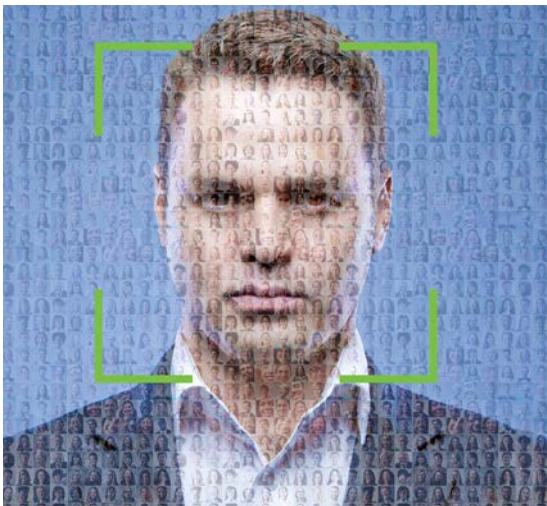


# Faciality

## High Tech Facial Access Control

Today, security is one of the most valued assets in any area of our lives. Every day we surround ourselves with people we do not know. When we find ourselves facing situations that we do not control, feeling protected against any threat is of vital importance.

Thanks to our partnership with Herta Security, ZKTeco has launched Faciality, a system combining Herta's award winning server based facial recognition with our most advanced access control systems, making it the most complete solution for the surveillance, control and protection of public spaces.



The installation and setup of all Faciality systems is very simple.

After the initial configuration on the server, the system will detect and identify individuals automatically and will apply the necessary actions previously defined in the application to each user detected.







We have four facial recognition solutions specially developed for each type of situation, from simple access control to simultaneous identification in crowded environments. All offer high detection accuracy and are compatible with our access control service.

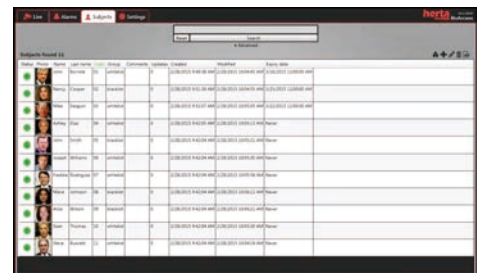


faciality  
**ACCESS**

**Faciality Access** is the perfect solution to limit user access to physical enclosures such as buildings, offices, server rooms and overall security restricted areas.

faciality  
**SHIELD**

**Faciality Shield** is the most advanced solution for access control. Like its most basic version but with an improved algorithm it allows users to limit access to physical premises and security restricted areas.

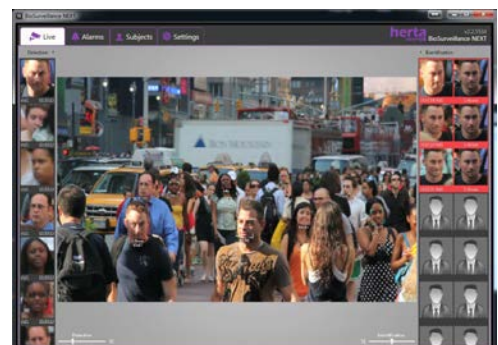


faciality  
**FINDER**

**Faciality Finder** detects multiple faces in real time, facilitates user management at any time and even allows you to register using video capture (on-the-fly).

faciality  
**SCOUT**

**Faciality Scout** is a video surveillance solution for high-performance facial recognition, specially designed for the simultaneous identification of subjects in multitudinous and ever changing facilities, such as airports, metro or train stations, shopping centres, sports stadiums or urban environments.



# License Plate Recognition

## Vehicle Access Management

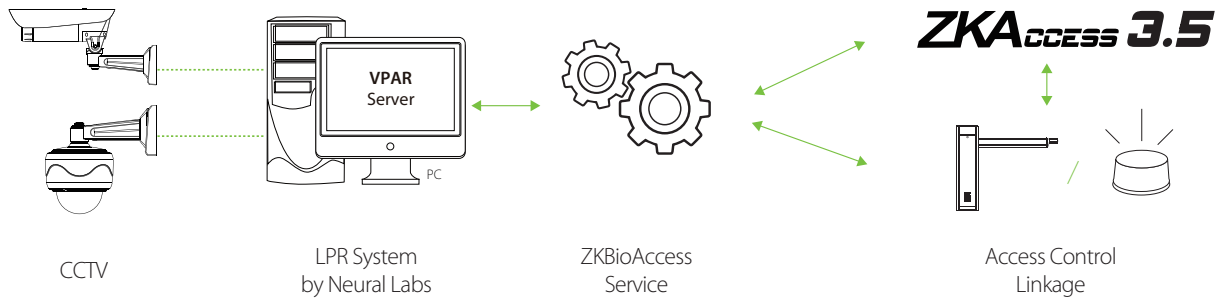


**ZKBioAccess is a set of applications for License plate recognition with Access Control Management to use with ZKTeco Standalone terminals, Access Control Panels and barriers.** It includes a Windows Service with an application interface to use together with VPar Server by Neural Labs.

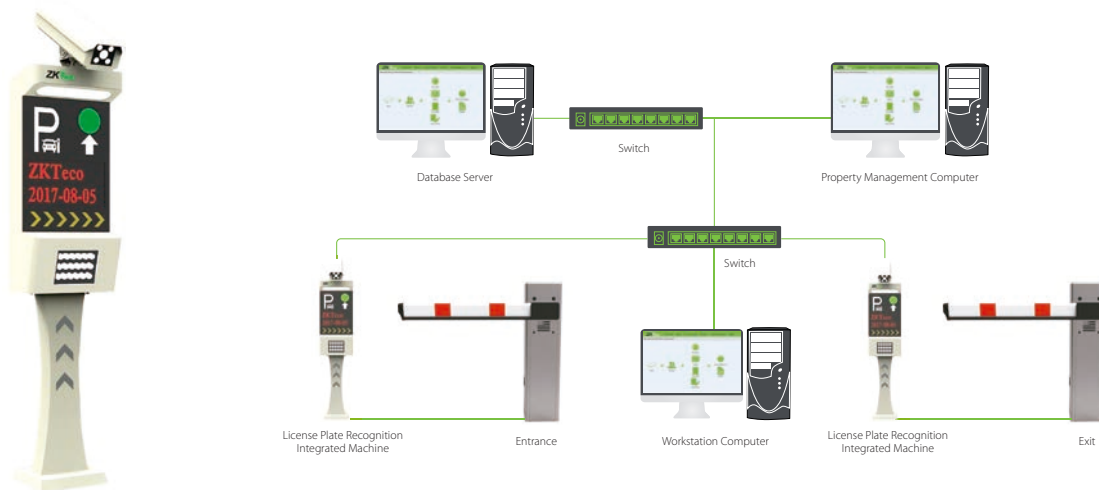
VPar provides a system for detecting and reading License Plates from Cars, Containers and Trains ID or Hazard Plates, with the maximum reading reliability, thus offering an immediate time-to-market .

- 98% or bigger reliability rating on LPR
- Recognition of 2-line vehicle plates
- Possibility of providing up to 8 vehicle plates in one image
- Integration with ZKTeco and 3rd Party IP cameras and NVR's
- Duplicated license plate filtering
- Integrates its own database
- Access Control Linkage with ZKTeco Parking barriers
- LPR from vehicles in movement (Free-Flow) or stopped (Stop & Go).

## System Configuration 1



## System Configuration 2



### »» LPRS1000 License Plate Recognition Integrated Machine

## Supported Countries

ANGOLA	CANADA	ESTONIA	HONG KONG	MEXICO	PORTUGAL	SWITZERLAND
ARGENTINA	CHILE	FILIPPINES	HUNGARY	NETHERLANDS	ROMANIA	TUNISIA
AUSTRIA	COLOMBIA	FINLAND	INDONESIA	NICARAGUA	RUSSIA	TURKEY
BELGIUM	COSTA RICA	FRANCE	IRELAND	NIGERIA	SENEGAL	UNITED KINGDOM
BERMUDA	CYPRUS	GERMANY	ISRAEL	NORWAY	SINGAPORE	URUGUAY
BOLIVIA	DENMARK	GIBRALTAR	ITALY	PANAMA	SLOVENIA	USA
BOSNIA & HERZEGOVINA	DOMINICAN REPUBLIC	GREECE	LIBANO	PARAGUAY	SOUTH AFRICA	VENEZUELA
BRAZIL	ECUADOR	GUATEMALA	MALAYSIA	PERU	SPAIN	VIETNAM
BULGARY	EL SALVADOR	HONDURAS	MAOROCCO	POLAND	SWEDEN	

# POS

With our advantages in own supply chain system and production quality, through the integration of advanced product resources, market resources and technical resources, we are leading the renovation of the traditional cashier industry.



## POS Terminals



### »» ZK1510

- Processor: Intel Celeron® J1900 Quad-Core processor (2.0 GHz)
- System Memory: 2GB Standard, DDR3L 1333MHz (Max.8GB)
- Storage Device: 32GB SSD Standard, 1\*2.5" HDD&2.5" Mini SSD
- OS: Windows 7/8, Windows 10 IoT Enterprise, POS Ready 7, Linux
- Display: 15" Bezel-Free true-flat display with PCAP touch screen
- Customer Display: LED (8C digital tube)
- Optional: MSR, VFD, 15" 2nd LCD Display, fingerprint reader
- Model Name: ZK1510, ZK1530, ZK1550

### »» ZK1515

- Processor: Intel Celeron® J1900 Quad-Core processor (2.0 GHz)
- System Memory: 2GB Standard, DDR3L 1333MHz (Max.8GB)
- Storage Device: 32GB SSD Standard, 1\*2.5" HDD& 2.5" Mini SSD
- OS: Windows 7/8, Windows 10 IoT Enterprise, POS Ready 7, Linux
- Display: 15" Bezel-Free true-flat display with PCAP touch screen
- Customer Display: LED (8C digital tube)
- Optional: MSR, VFD, 12.1" 2nd LCD Display, fingerprint reader



- Processor: Intel Celeron® J1900 Quad-Core processor (2.0 GHz)
- System Memory: 2GB Standard, DDR3L 1333MHz (Max.8GB)
- Storage Device: 32GB Mini SSD Standard, 1\*Mini SATA
- OS: Windows 7/8, Windows 10 IoT Enterprise, POS Ready 7, Linux
- Customer Display: LED (8C digital tube) Display, fingerprint reader

### »» ZK3510

- Display: 15" Bezel-Free true-flat display with PCAP touch screen
- Optional: MSR, VFD, 12.1" 2nd LCD
- Model Name: ZK3510, ZK3530, ZK3550



### »» ZK3510W

- Display: 15.6" Bezel-Free true-flat display with PCAP touch screen
- Optional: MSR, VFD, 11.6" 2nd LCD Display, fingerprint reader
- Model Name: ZK3510W, ZK3530W, ZK3550W

## »» ZK5510

- Processor: Intel Celeron® J1900 Quad-Core processor (2.0 GHz)
- System Memory: One SO-DIMM socket supports DDR3L 1600 up to 8GB
- Storage Device: 2.5" SATAIII HDD × 1
- OS: Windows 7/8, Windows 10 IoT Enterprise, POS Ready 7, Linux

- Processor: Intel Celeron® J1900 Quad-Core processor (2.0 GHz)
- System Memory: One SO-DIMM socket supports DDR3L 1333 up to 8GB
- Storage Device: 2.5" SATAIII HDD × 1
- OS: Windows 7/8, Windows 10 IoT Enterprise, POS Ready 7, Linux
- Optional: MSR, MSR + RFID, MSR + iButton, VFD, 8"/10" 2nd LCD Display, 1D/2D barcode scanner, Wi-Fi & NFC

- Display: 15" Five-Wire Analog Resistive or Projected Capacitive
- Optional: MSR, MSR + RFID, MSR + iButton, VFD, 8"/10" 2nd LCD Display, fingerprint reader, 1D/2D barcode scanner Wi-Fi & NFC
- Model Name: ZK5510, ZK5510-P



## »» ZK7550

- Display: 15" Five-Wire Analog Resistive or Projected Capacitive
- Model Name: ZK7550, ZK7550-P



## »» ZK7550W

- Display: 15.6 Five-Wire Analog Resistive or Projected Capacitive
- Model Name: ZK7550W, ZK7550W-P



## »» ZKAIO2010

### Built in 80mm Thermal Printer

- Processor: Intel Celeron® J1900 Quad-Core processor (2.0 GHz) (Optional i3 & i5)
- System Memory: 2GB Standard, DDR3L 1333MHz (Max.8GB)
- Storage Device: 32GB SSD Standard, 1\*2.5" HDD&2.5" Mini SSD
- Model Name: ZKAIO2030, ZKAIO2050

- OS: Windows 7/8, Windows 10 IoT Enterprise, POS Ready 7, Linux
- Display: 15" Bezel-Free true-flat display with PCAP touch screen
- Customer Display: LED (8C digital tube)
- Optional: MSR, VFD, 15" 2nd LCD Display, fingerprint reader



## ▾ Peripherals



## »» ZKP8001

- Auto Cutter Direct Thermal Line Printing
- 300mm/sec
- Support different languages
- Support different systems
- Compatible with ESC / POS



## »» ZKP8002

- Auto Cutter Direct Thermal Line Printing
- 300mm/sec
- Support different languages
- Support different systems
- Compatible with ESC / POS



## »» ZKP8005

- Wall-mounted thermal printer
- Auto Cutter Direct Thermal Line Printing
- 300mm/sec
- Support different languages
- Support different systems
- Compatible with ESC / POS



»» ZKP5801



»» ZKP5802

## ZKP5801/ZKP5802

- Direct Thermal Line Printing
- 90mm/sec
- Support different languages
- Support different systems
- Compatible with ESC / POS



»» ZKB101

## Barcode Scanner

- 1D barcode scanner
- 32-bit wired laser
- Provides USB-HID interface



»» ZKB102

## Barcode Scanner

- 1D barcode scanner
- 32-bit wired laser
- Provides USB-HID interface



»» ZKB201

## Barcode Scanner

- 2D barcode scanner
- Provides USB-HID interface



»» ZKC01

## Cash Drawer

- With 4 Bills, 8 Coins
- Equipped with 1 Check
- Slots, 3 Position Lock



»» ZKD15 Series

## Touch Monitor

- 15" TFT LCD Panel
- 5 wires touch screen
- 12V 3A
- Support VGA input format
- Foldable Touch Monitor
- Model: ZKD1502, ZKD1503



»» ZKD17 Series

## Touch Monitor

- 17" TFT LCD Panel
- 5 wires touch screen
- 12V 3A
- Support VGA input format
- Foldable Touch Monitor
- Model: ZKD1702, ZKD1703



**ZKT***TECO*

**ZKTeco Europe**

Carretera de Fuencarral 44, Edificio 1. Planta 2.  
28108 Alcobendas. Madrid. SPAIN  
Tel: +34 916 532 891 E-mail: [sales@zkteco.eu](mailto:sales@zkteco.eu)  
[www.zkteco.eu](http://www.zkteco.eu)

© Copyright 2018. ZKTeco Inc. ZKTeco Logo is a registered trademark of ZKTeco or a related company. All other product and company names mentioned are used for identification purposes only and may be the trademarks of their respective owners. All specifications are subject to change without notice. All rights reserved.