



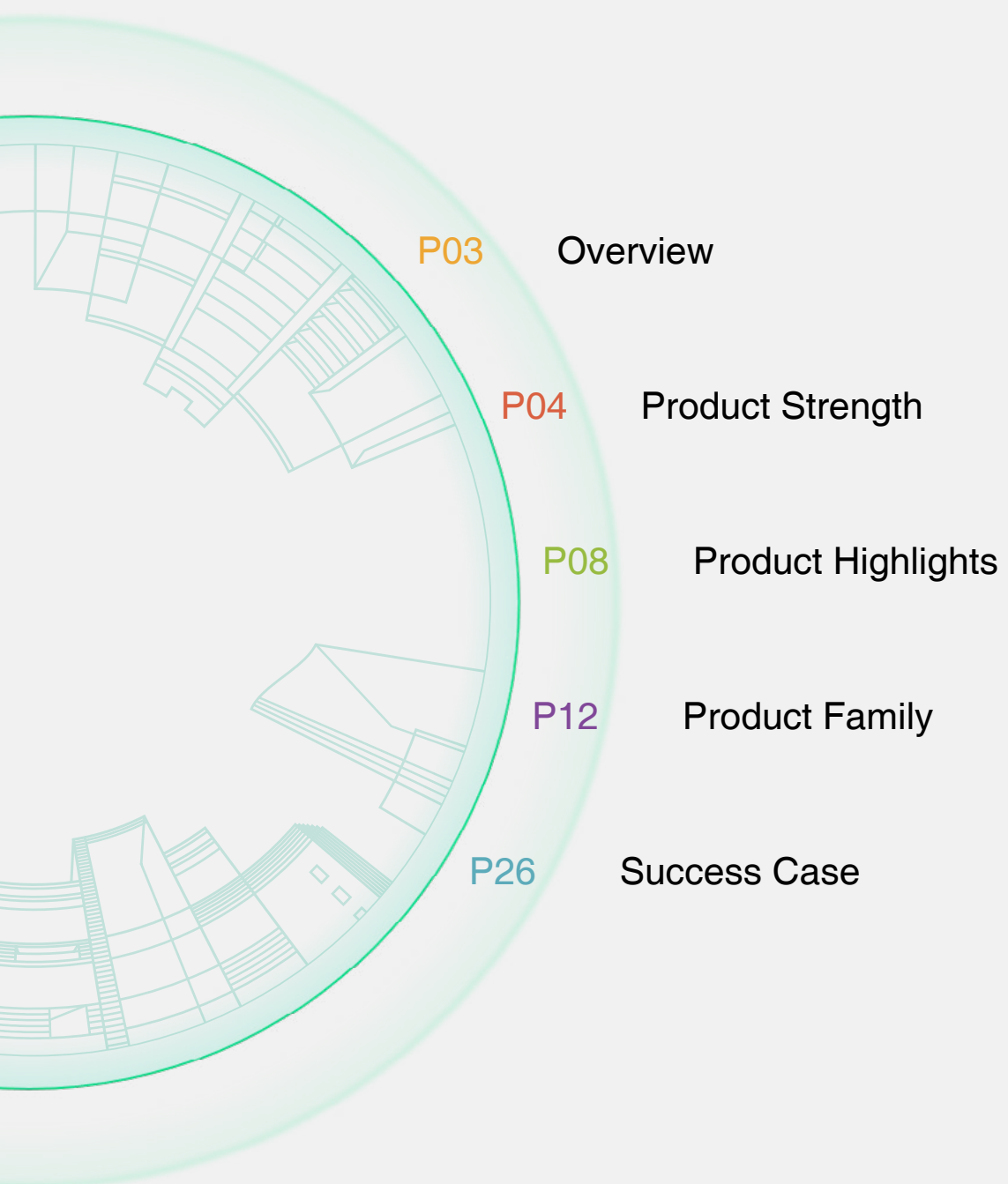
# INTELLIGENT VERIFICATION SEAMLESS ACCESS

## Dahua Turnstile Products

2024 Ver.1

# CONTENTS

---



P03 Overview

P04 Product Strength

P08 Product Highlights

P12 Product Family

P26 Success Case

## Overview

With its independent research and development capabilities, Dahua provides a variety of speed gates and turnstile products. We integrate self-developed servo control algorithms, facial recognition, access control and intercom technology to enable our products to adapt to different scenarios. Dahua pedestrian turnstiles incorporate different modules for access control, turnstile control and alarm. Memory mode is also available to accommodate a large number of people during peak hours. The barrier can open and close instantly without making noise.



## Production Strength

Dahua established a self-built sheet metal factory with automated manufacturing, assembly line and testing facilities to create high-quality gate products.

## Quality Assurance

Dahua conducts industry-leading, comprehensive and professional testing to ensure the feasibility and stability of speed gates and turnstile products.



Automated Cutting Test



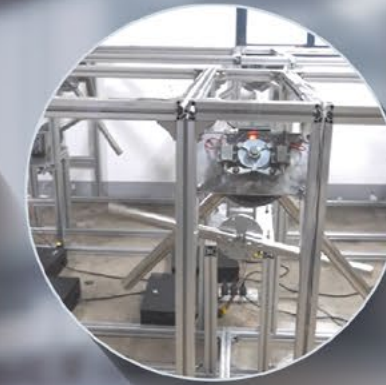
CNC Nail Planting



Automatic Laser Welding



High and Low Temperature Test



Motor Core Life Test



Safety Test (IEC 62368-1)



Assembly Line



Automated Testing



Aging Test



Destructive Test



IK Test



Rain Test

## Craftsmanship Design



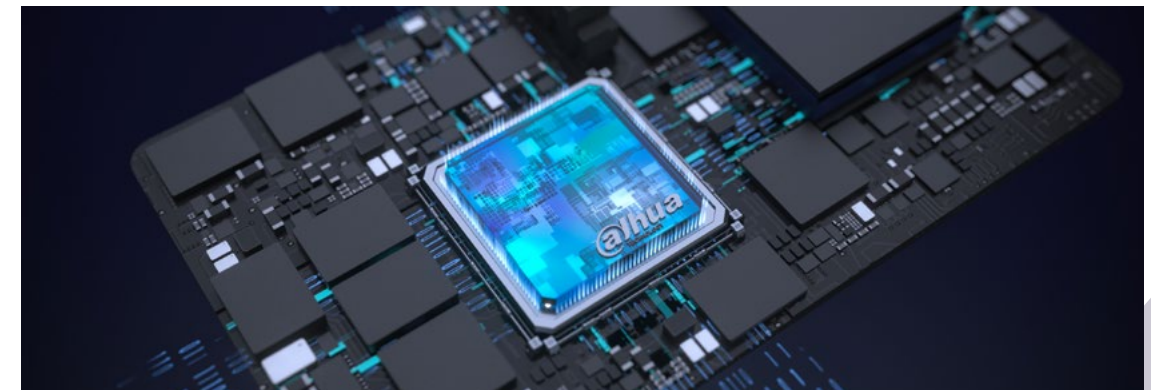
### Strengthened Motor

The motor and core components have been specially optimized to ensure the product's lifespan and reliability.



### Servo Control Algorithm

Offers 1.5ms real-time control, non jerky operation, and infinite variable speed.



### Traffic Algorithm

Captures more than 10 types of traffic behaviors, making it suitable for scenarios with fast traffic condition.

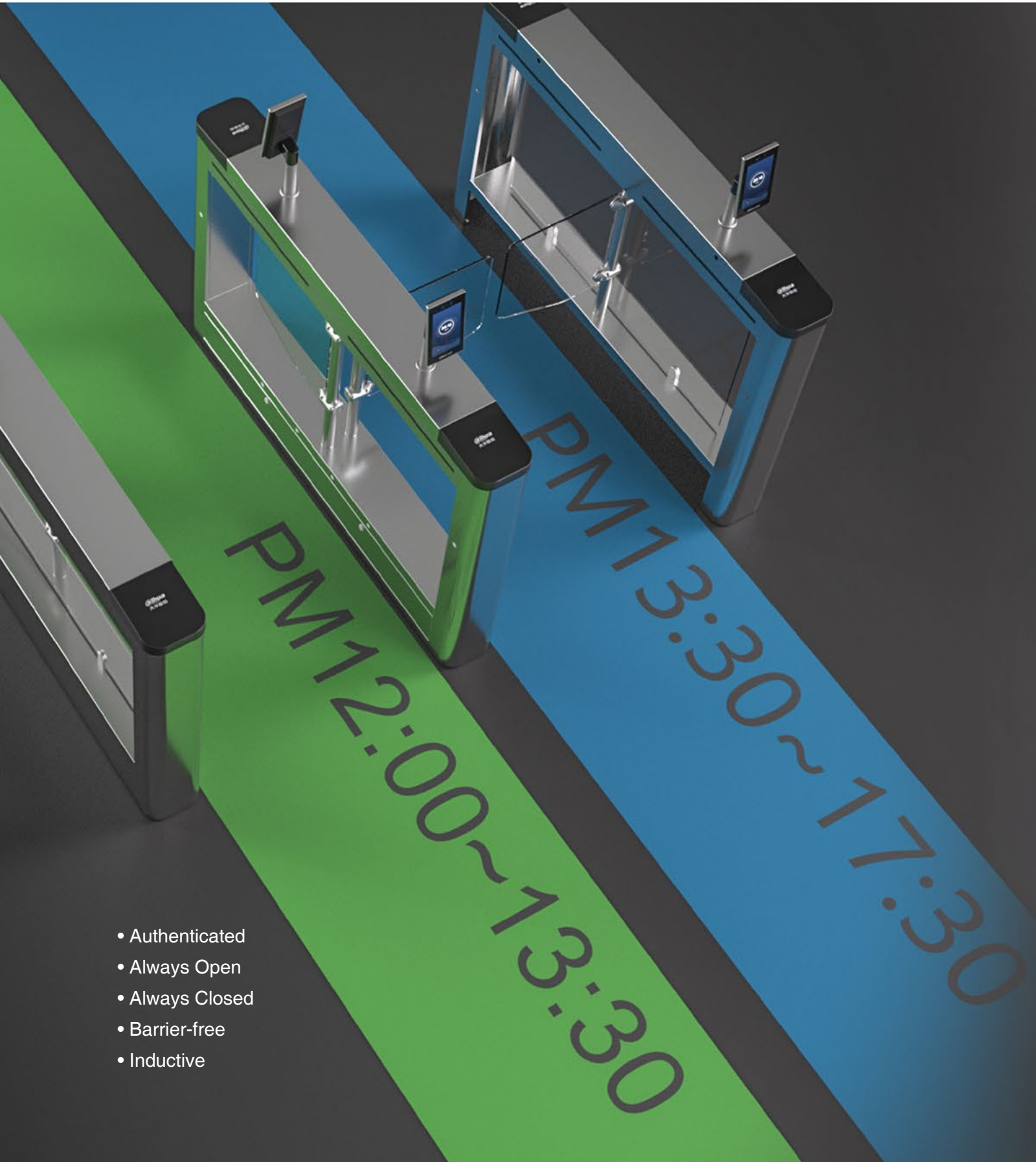


## 9 Passage Modes

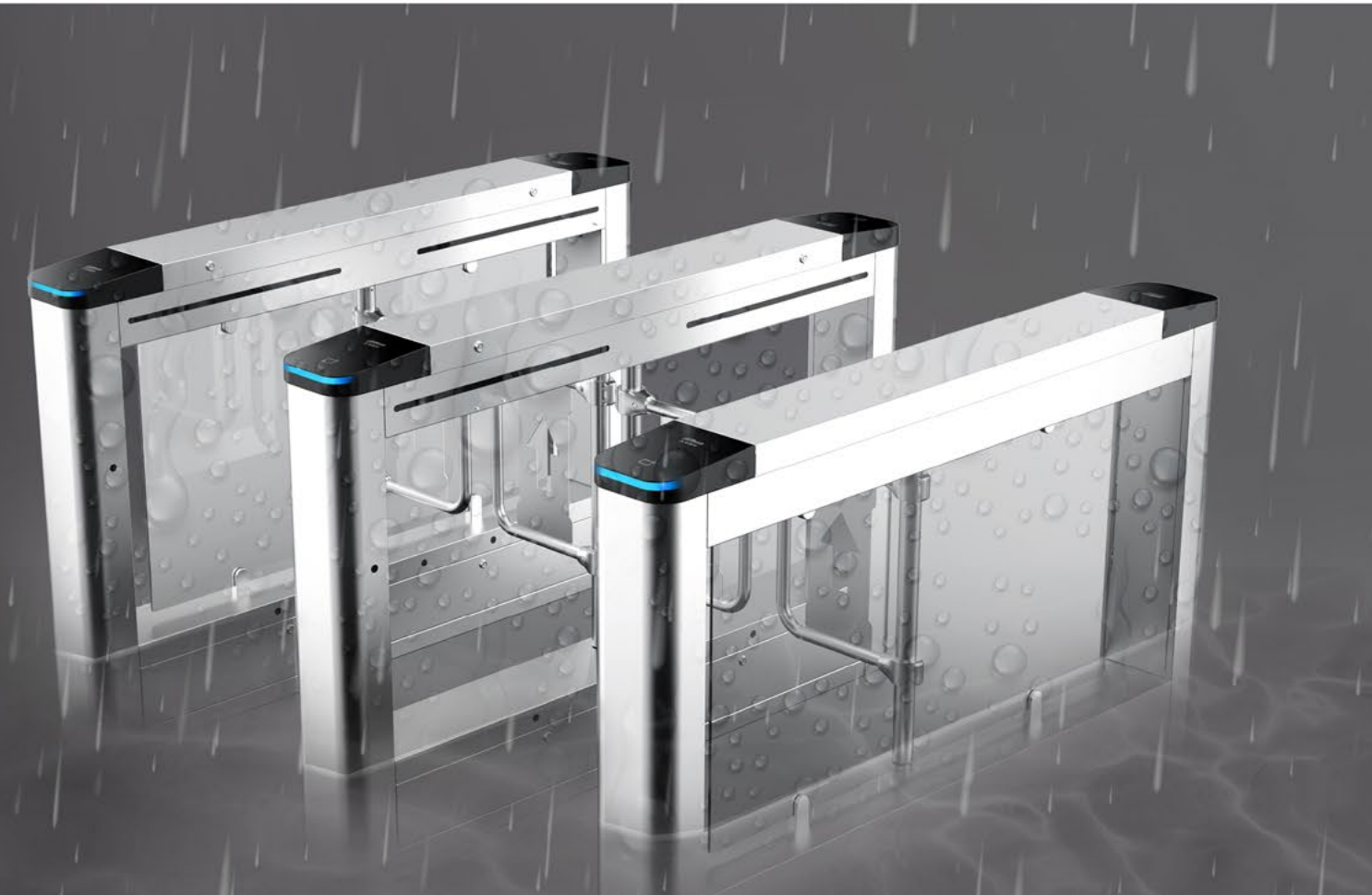
Includes direction of entry/exit, free/authorized/prohibited modes, as well as combined configurations, providing flexible adaptation to different traffic scenarios.

## 4 Protection Design

It is ideal for outdoor scenarios.



- Authenticated
- Always Open
- Always Closed
- Barrier-free
- Inductive



### Anti-condensation

It is equipped with built-in fan ventilation, anti-condensation foam and double protective water shield.

### Immersion-proof

The top-mounted motor design provides immersion protection of up to 80cm high.



**Waterproof**  
IPX4 proof level

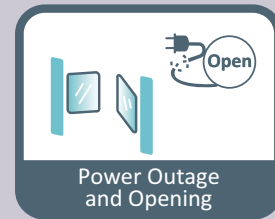


**Anti-water Retention**  
The 5° tilting function panel ensures water-free surface (outdoor installation) during rainy days.



## Product Highlight

### Traffic Safety Guarantee



### Multiple Verification Methods for Quick Passage

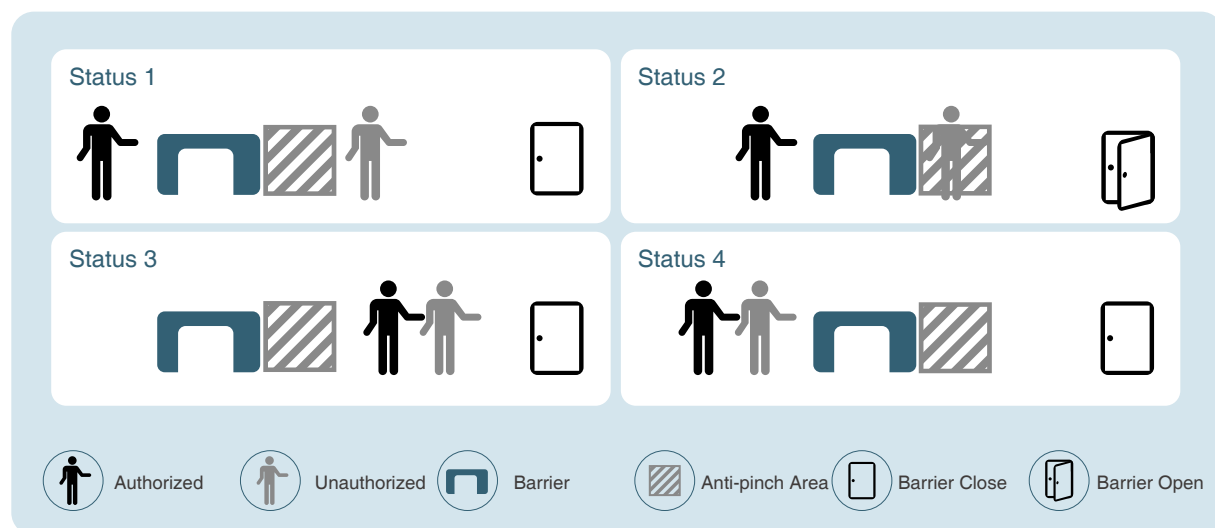
It provides a variety of authentication options, such as card, face, fingerprints, QR code, etc. It also supports remote verification through the platform to ensure safe passage and to improve traffic efficiency.



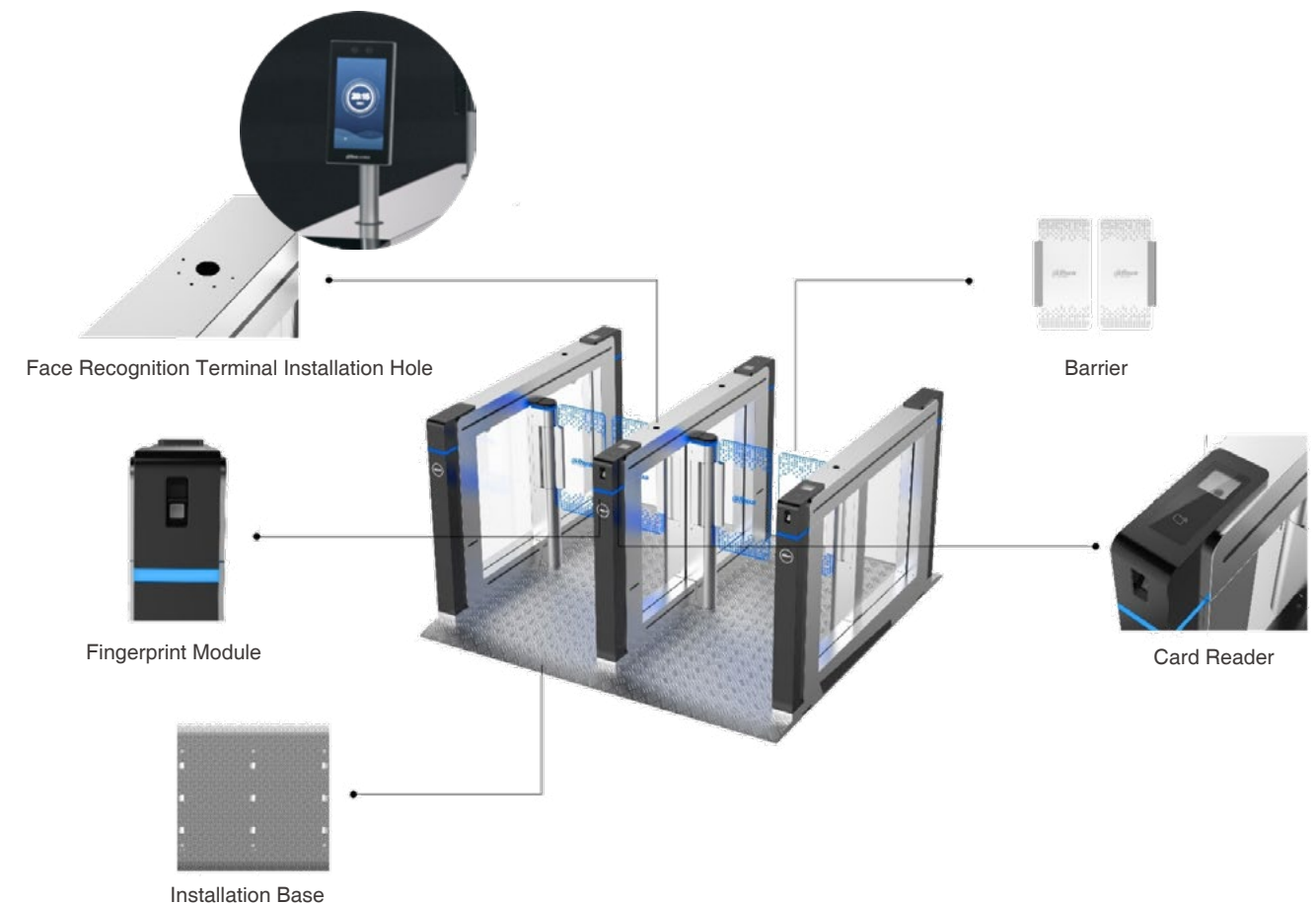
### 4 Levels of Security Settings

Suitable for intercepting trailing and intrusion in different scenarios. The higher the level, the higher the traffic requirements.

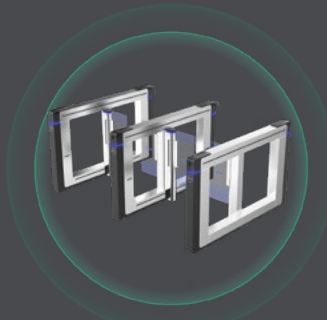
Security Level	Trailing	Trailing	Sound Alarm	Light Alarm	Barrier Status
Level 1	✓	✓	×	✓	Open
Level 2	×	×	✓	✓	Open
Level 3	×	×	✓	✓	Depends
Level 4	×	×	✓	✓	Open



### Accessories Extension for Various Scenarios



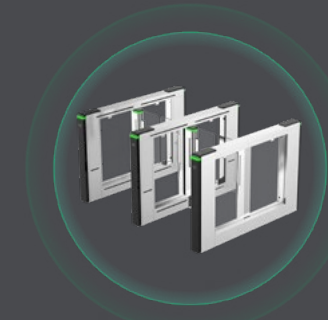
# Product Family



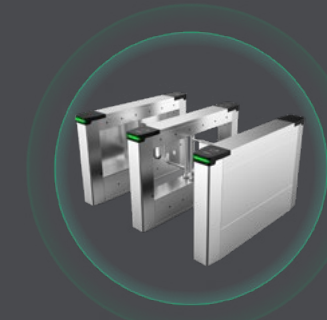
ASGB8xxX



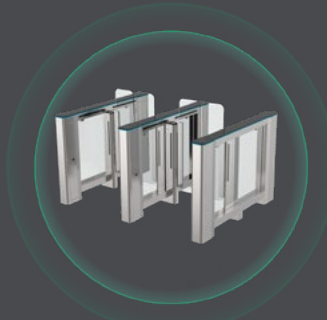
ASGB8xxY



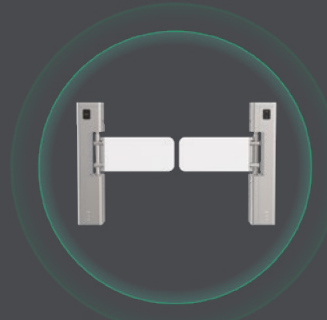
ASGB6xxX



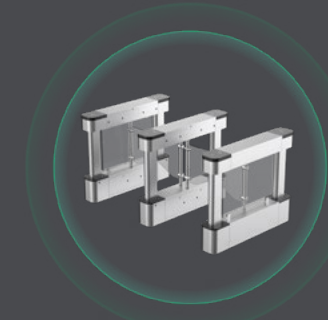
ASGB6xxK



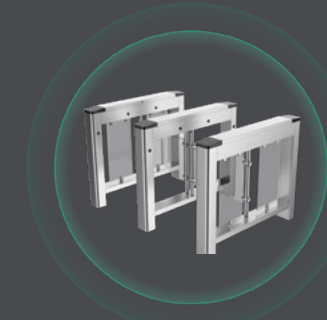
ASGB8xxH



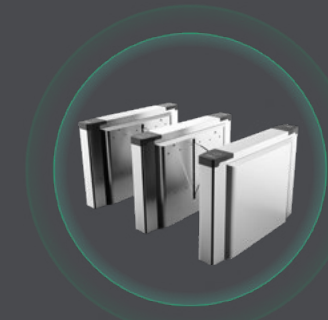
ASGB2xxZ



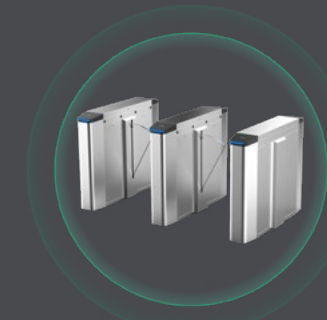
ASGB2xxY



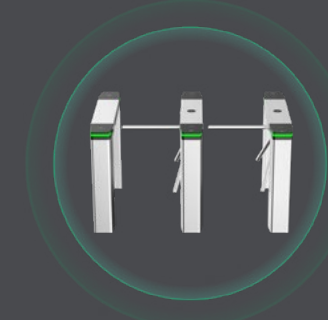
ASGB1xxK



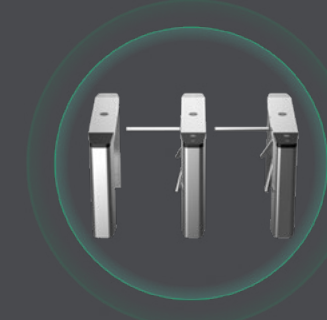
ASGY5xxB



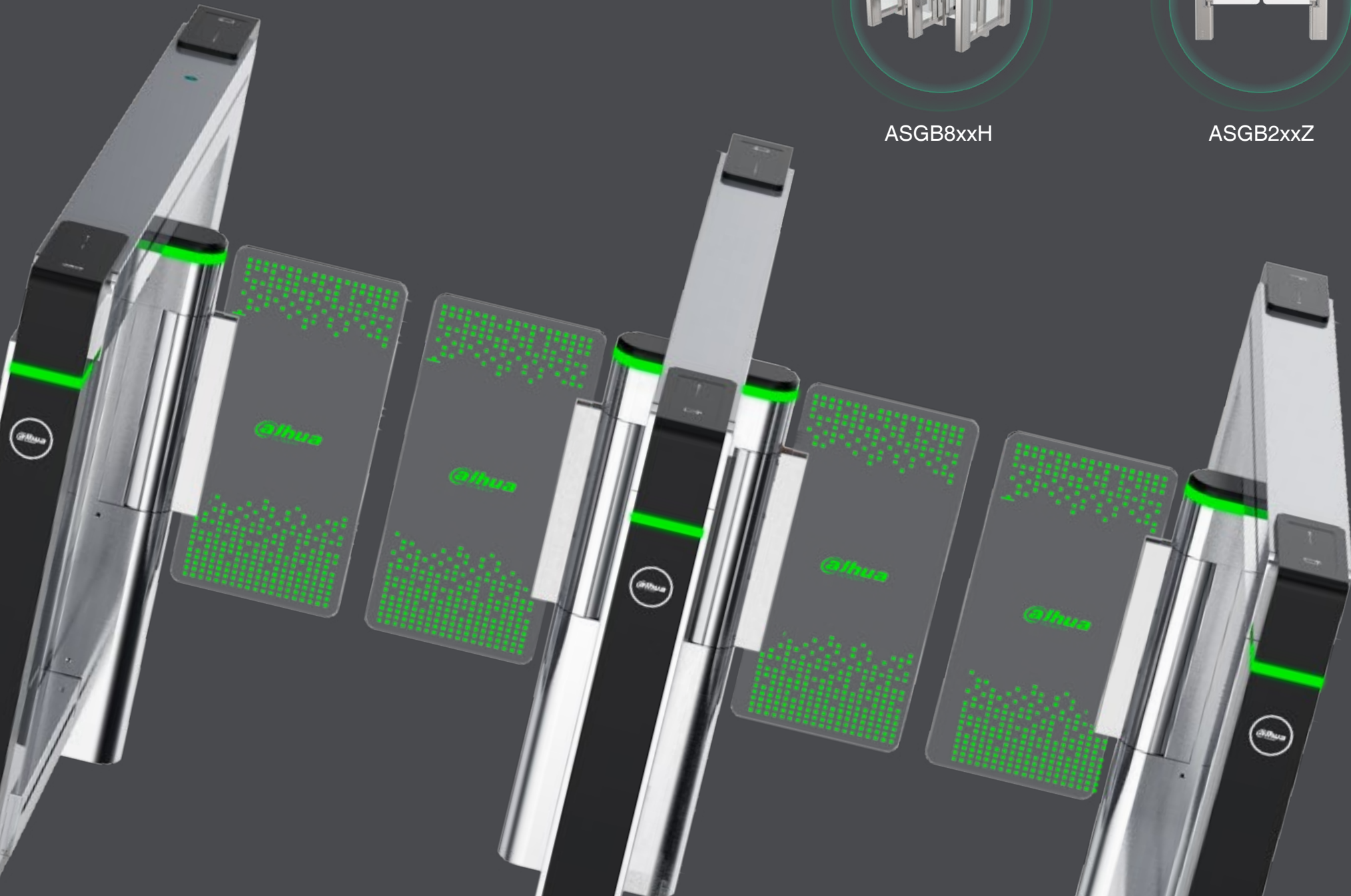
ASGY1xxA



ASGG5xxT


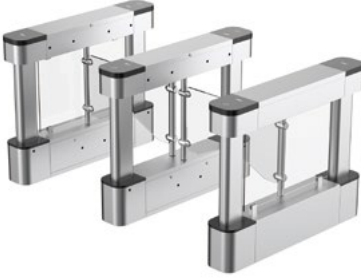


ASGG1xxT





## Swing Barrier

Model	ASGB1xxK	ASGB2xxY
Appearance		
Motor	Brushless Servo Motor	Brushless DC Motor
Cabinet Material	SUS304 1.0mm	SUS304 1.2mm
Detection	4 pairs of IR detectors	8 pairs of IR detectors
Lock/Unlock Speed	0.8 s	0.8 s
Passage Frequency	20–70 people/min	20–60 people/min
MCBF	≥3 million times	≥3 million times
Passage Width	Standard: 600 mm; Max: 900 mm	Standard: 600 mm; Max: 1,100 mm
Barrier Material	Acrylic	Acrylic
Product Dimension	1,200 mm × 140 mm × 980 mm	1,200 mm × 200 mm × 980 mm
Certification	CE	CE/FCC
Operating Environment	Indoor; Outdoor	Indoor; Outdoor
Operating Temperature	–25 °C to 70 °C	–25 °C to 70 °C
Power Supply Mode	VAC 100-240V, 50/60Hz	VAC 100-240V, 50/60Hz



## Swing Barrier

Model	ASGB6xxX	ASGB6xxK
Appearance		
Motor	Brushless Servo Motor	Brushless Servo Motor
Cabinet Material	SUS304 1.5mm	SUS304 1.5mm
Detection	12 pairs of IR detectors	12 pairs of IR detectors
Lock/Unlock Speed	0.5–1.6 s (adjustable)	0.5–1.6 s (adjustable)
Passage Frequency	20–40 people/min	20–60 people/min
MCBF	≥5 million times	≥5 million times
Passage Width	Standard: 600 mm; Max: 1,000 mm	Standard: 600 mm; Max: 1,100 mm
Barrier Material	Acrylic	Acrylic/Stainless steel
Product Dimension	1,500 mm × 120 mm × 1,000 mm	1,500 mm × 200 mm × 980 mm
Certification	CE/FCC	CE/FCC
Operating Environment	Indoor	Indoor; Outdoor
Operating Temperature	–25 °C to 70 °C	–25 °C to 70 °C
Power Supply Mode	VAC 100-240V, 50/60Hz	VAC 100-240V, 50/60Hz





## Swing Barrier



Model	ASGB8xxX	ASGB8xxY
Appearance		
Motor	Brushless Servo Motor	Brushless Servo Motor
Cabinet Material	SUS304 2.0mm	SUS304 1.5mm
Detection	10 pairs of IR detectors 20 pairs of light curtains	10 pairs of IR detectors 20 pairs of light curtains
Lock/Unlock Speed	0.6 s–2.4 s (adjustable)	0.6 s–1.6 s (adjustable)
Passage Frequency	20–60 people/min	20–40 people/min
MCBF	≥ 5 million times	≥ 5 million times
Passage Width	Standard: 600 mm	Standard : 600 mm; Max: 1200 mm
Barrier Material	Acrylic	Acrylic
Product Dimension	1,500 mm × 120 mm × 1,000 mm	1,600 mm × 220 mm × 1,000 mm
Certification	CE/FCC	CE/FCC
Operating Environment	Indoor	Indoor; Outdoor
Operating Temperature	–10 °C to 60 °C	–30°C to 70°C
Power Supply Mode	VAC 100-240V, 50/60Hz	VAC 100-240V, 50/60Hz

## Flap Barrier


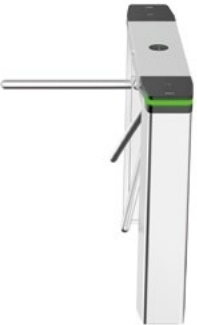
Model	ASGB2xxZ	ASGB8xxH
Appearance		
Motor	Brushless DC Motor	Brushless Servo Motor
Cabinet Material	SUS304 1.2mm	SUS304 2.0mm
Detection	1 pairs of IR detector	12 pairs of IR detector
Lock/Unlock Speed	0.6 s–3.0 s (adjustable)	0.8 s–1.5 s (adjustable)
Passage Frequency	20–60 people/min	20–35 people/min
MCBF	≥3 million times	≥ 8 million times
Passage Width	Standard: 1,200 mm	Standard: 600 mm; Max: 900 mm
Barrier Material	Acrylic	Tempered glass
Product Dimension	200 mm × 200 mm × 980 mm	Single-motor: 1,500 mm × 150 mm × 1,000 mm; Double-motor: 1,500 mm × 280 mm × 1,000 mm
Certification	CE	CE
Operating Environment	Indoor	Indoor
Operating Temperature	–15 °C to +70 °C	–20°C to 50 °C
Power Supply Mode	VAC 100-240V, 50/60Hz	VAC 100-240V, 50/60Hz



## Flap Barrier

Model	ASGY1xxA	ASGY5xxB
Appearance		
Motor	Brushless DC Motor	Brushless Servo Motor
Cabinet Material	SUS304 0.8mm	SUS304 1.2mm
Detection	4 pairs of IR detector	12 pairs of IR detector
Lock/Unlock speed	≥0.7 s	0.7 s–2.4 s (adjustable)
Passage Frequency	20–60 people/min	20–60 people/min
MCBF	≥3 million times	≥ 5 million times
Passage Width	Standard: 600 mm; Max: 600 mm	Standard: 600 mm
Barrier Material	Acrylic	Acrylic
Product Dimension	1,200 mm × 280 mm × 980 mm	1,400 mm × 280 mm × 1,000mm
Certification	CE	CE/FCC
Operating Environment	Indoor	Indoor; Outdoor
Operating Temperature	–25 °C to 70 °C	–25 °C to 70 °C
Power Supply Mode	VAC 100–240V, 47/63Hz	VAC 100–240V, 50/60Hz

## Tripod Turnstile

Model	ASGG1xxT	ASGG5xxT
Appearance		
Cabinet Material	SUS304 0.8 mm	SUS304 1.5 mm
Passage Frequency	20-30 people/min	20-40 people/min
MCBF	≥ 1 million times	≥ 3 million times
Passage Width	Standard: 600 mm	Standard: 600 mm
Barrier Material	Stainless steel	Stainless steel
Product Dimension	1,200 mm × 220 mm × 980 mm	1,200 mm × 200 mm × 980 mm
Certification	CE	CE/FCC
Operating Environment	Indoor; Outdoor	Indoor; Outdoor
Operating Temperature	–25 °C to 70 °C	–25 °C to 70 °C
Power Supply Mode	VAC 100–240V, 50/60Hz	VAC 100–240V, 50/60Hz

# Face Recognition Terminal

Contactless Access Brings Convenient Passage



## Fast

Provides a face recognition speed of less than 0.3 second per person.



## Accurate

Offers 99.9% accuracy and strong adaptability to harsh environments.



## Convenient

Offers touchless access, diverse installation options and multiple management interfaces.







## Trustworthy

Equipped with anti-spoofing algorithm against photo and video attack.





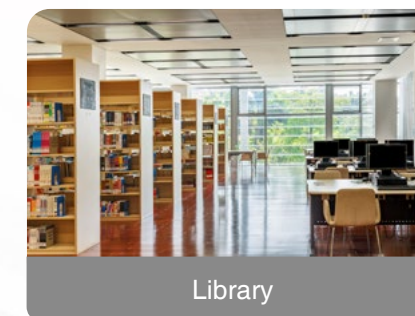
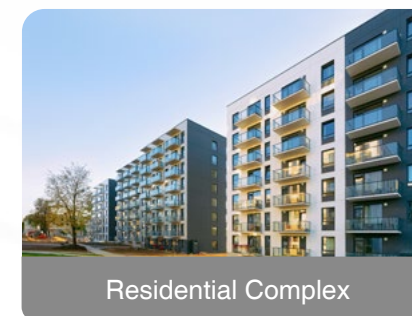
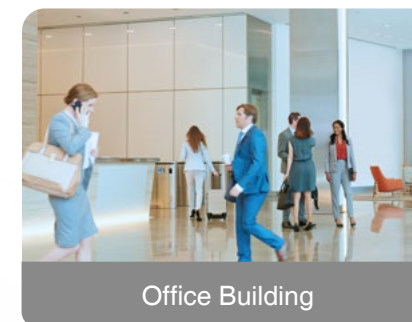
## Face Recognition Terminal

Model	ASI6213S	ASI7213S-W	ASI7213K-W	ASI8213S-W
Appearance				
Screen	4.3" LCD	7" LCD	7" LCD	8" LCD
Camera	2-MP dual-lens CMOS HD	2-MP dual-lens CMOS	2-MP dual-lens CMOS	2-MP CMOS dual-lens
Capacity	6,000 users	50,000 users	50,000 users	100,000 users
	6,000 faces; 10,000 cards; 6,000 passwords; 300,000 records	50,000 faces; 100,000 cards; 50,000 passwords; 300,000 records	50,000 faces; 100,000 cards; 50,000 passwords; 300,000 records	100,000 faces; 500,000 cards; 100,000 passwords; 300,000 records
Face Speed	0.2 s	0.3 s	0.2 s	0.2 s
Operating Environment	Indoor; Outdoor	Indoor	Outdoor	Indoor; Outdoor

## Bracket

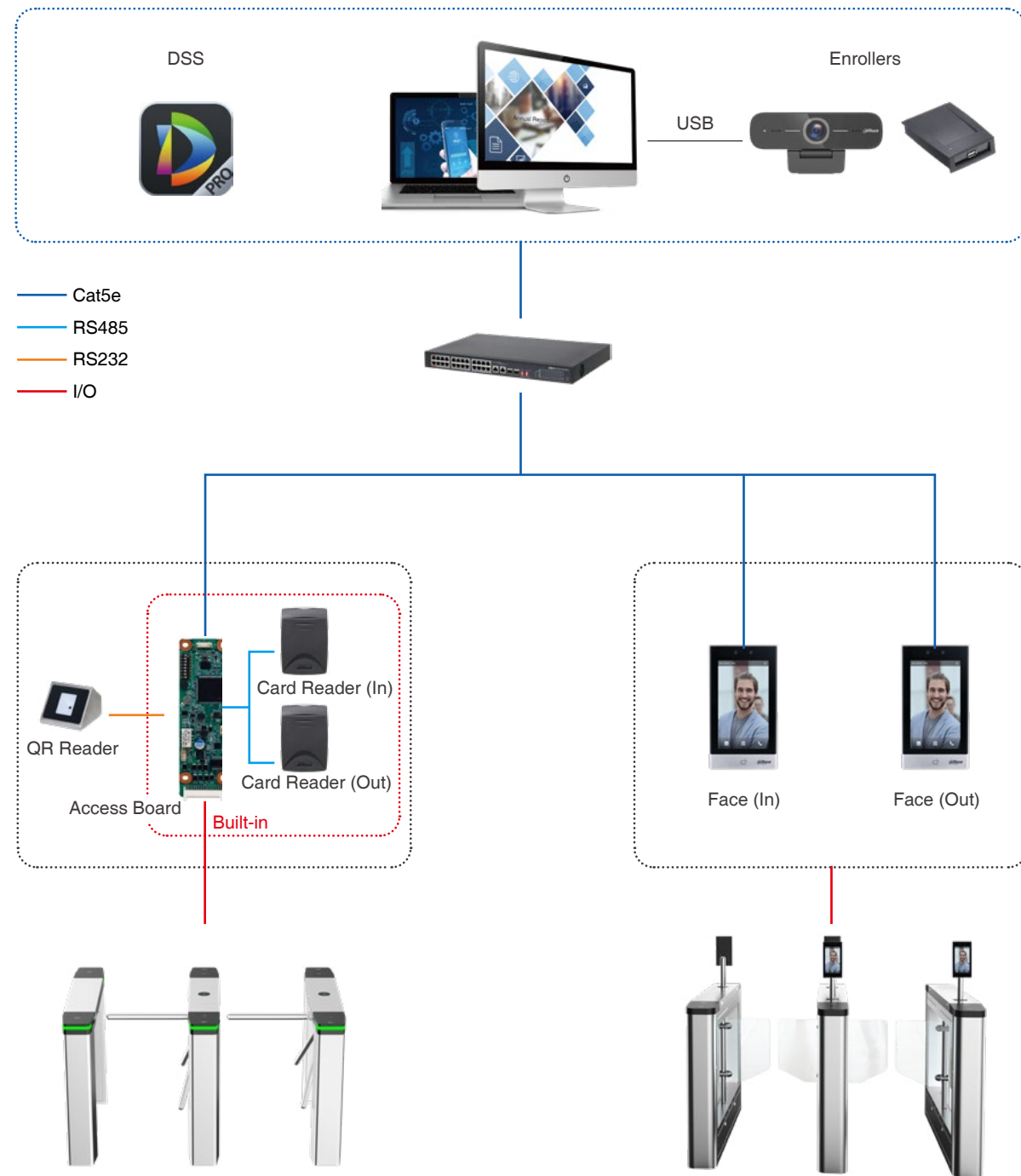
Model	ASF053-ZJ
Appearance	

## Application Scenarios





## System Topology



## Third-party Integration

### Equipment Docking



### Access Management Platform Docking





### Mexico International Industrial Park | **BUILDING**

#### **Efficient & safe passage of people & vehicles**

It is Dahua's first time in Mexico to cooperate with an industrial park that needs to implement an access control system. Full height turnstile in the park entrance, swing turnstile at the office gate, and ANPR camera with VTO for authorized vehicle access have been installed to ensure park safety.

### Community in Saudi Arabia | **RESIDENTIAL**

#### **Efficient access control & remote identification**

The biometric-based access devices equipped with Dahua's high-end turnstiles and latest algorithms were installed in this community. Also, QR code is used to meet the needs of various groups. The Smart Gate Solution was designed and customized according to the needs of customers, integrating FR, ANPR and signage to realize comprehensive verification and improve entrance safety and traffic efficiency.

### Australia Business Club | **CLUB**

#### **Efficient management & control of personnel**

Dahua provides an efficient access control solution for a 125-year-old Business Club located in Sydney. It manages entrance/exit areas, realize efficient member access and create report statistics, thus saving labor costs. The Business Club also realizes efficient management through face recognition of some special individuals and repeat offenders.

### Thailand Park | **PARK**

#### **Contactless face recognition access control & visitor appointment**

In order to ensure the management of the park, turnstiles with face recognition are used at the entrance to ensure safety. Using face recognition devices equipped with Dahua's swing gates and latest algorithm, it can accurately identify park personnel for fast passage during peak periods.



# ENABLING A SMARTER SOCIETY AND BETTER LIVING

## Dahua CEE & Nordic

Tel: +48 223957400  
Email: dh.cen@dahuatech.com

## Dahua Technology Poland SP.ZO.O

Tel: +48 223957400  
Email: biuro.pl@dahuatech.com

## Dahua Technology SRB D.O.O

Tel: +38 1 (11) 4429999  
Email: dh.srb@dahuatech.com

## Dahua Technology Denmark Aps

Email: Nordic.ne@dahuatech.com

## Dahua Technology Hungary LTD

Tel: +36 17899852  
Email: sales.hu@dahuatech.com

## Dahua Technology Bulgaria EOOD

Tel: +35929950013  
Support: support.bg@dahuatech.com

## Dahua Technology SRL

Email: marketing.ro@dahuatech.com

## Dahua Technology Czech s.r.o.

Tel: +420 225 986 001  
Email: admin.cz@dahuatech.com

## Dahua Guvenlik Teknolojileri Sanayi ve Ticaret A.S.

Email: sales.tr@dahuatech.com

## Dahua Technology Middle East FZE

Email: info.me@dahuatech.com

## Dahua Technology Mexico S.A. DE C.V.

Tel: +52 55 67231936  
Email: sales.mx@dahuatech.com  
Support: support.mx@dahuatech.com

## Dahua Technology Colombia S.A.S.

Tel: +57 6013106176  
Email: marketing.co@dahuatech.com  
Support: support.co@dahuatech.com

## Dahua Technology Perú S.A.C

Tel: +511 500-8555  
Email: sales.pe@dahuatech.com  
Support: support.pe@dahuatech.com

## Dahua Technology Chile SpA

Tel: +56 232705421  
Email: sales.cl@dahuatech.com  
Support: support.chile@dahuatech.com

## Dahua Technology Argentina S.A.

Email: project.ar@dahuatech.com

## Dahua Technology Panama S.A.

Email: sales.pa@dahuatech.com  
Support: support.pa@dahuatech.com

## Dahua Brazil

Tel: +55 11 32511871  
Suporte Técnico: suporte.br@dahuatech.com  
Vendas: comercial.br@dahuatech.com

## Dahua Technology USA Inc.

Tel: +1 (949) 679-7777  
Email: sales.usa@dahuatech.com  
Support: support.usa@dahuatech.com

## Dahua Technology Canada

Tel: +1 877-606-1590  
Email: sales.usa@dahuatech.com  
Support: support.usa@dahuatech.com

## Dahua Europe BV

Tel: +31 (0) 85-0715700  
Email: sales.benelux@dahuatech.com  
Support: support.benelux@dahuatech.com

## Dahua Iberia, S.L.

Tel: +34 917649862  
Email: sales.iberia@dahuatech.com  
Support: support.iberia@dahuatech.com

## Dahua Technology Italy s.r.l.

Tel: +39 02 99912900  
Email: info.italy@dahuatech.com  
Support: support.italy@dahuatech.com

## Dahua Technology GmbH

Tel: +49 211 2054 4120  
Email: sales.de@dahuatech.com  
Support: support.de@dahuatech.com

## Dahua Technology France

Tel: +33 (0) 1 48 53 70 53  
Email: sales.france@dahuatech.com  
Support: support.france@dahuatech.com

## Dahua Singapore

Tel: +65 65380952  
Email: sales.sg@dahuatech.com

## Dahua Malaysia

Tel: +60376620732  
Email: sales.my@dahuatech.com

## Dahua Indonesia

Tel: +6227893330  
Email: sales.id@dahuatech.com  
Support: support.id@dahuatech.com

## Dahua Australia

Tel: +61 290306000  
Email: sales.oc@dahuatech.com

## Dahua New Zealand

Tel: +64 09 2823467  
Technical Hotline: 0800 854 857  
Email: Dahua\_NZ@dahuatech.com

## Dahua Philippines

Email: Dahua\_Philippines@dahuatech.com

## Dahua Russia (Dahua Technology Rus LLC.)

Tel: 8 (800) 707-67-66  
Email: info.ru@dahuatech.com

## Dahua Kazakhstan (Dahua Technology Kazakhstan LLP)

Tel: +7 727 3110838  
Email: sales.kz@dahuatech.com

## Dahua Uzbekistan (OOO "Dahua Vision")

Tel: +998 781488666

## Dahua Technology Ukraine Office

Tel: +380674011526  
Email: dahua.ukraine@dahuatech.com

## Dahua Technology UK Limited

Tel: +44 (0) 1628 613 500  
Email: sales.uk@dahuatech.com  
Support: support.uk@dahuatech.com

## Dahua Technology South Africa (Pty) Ltd | Head Office

Office Line: +27 10 593 3242  
WhatsApp Business Help-Line: +27 84 072 9260  
Toll-Free Help-Line: 080 099 0064  
Email: sales.za@dahuatech.com  
Support: support.za@dahuatech.com

## Dahua Technology Nigeria Representative Ltd.

Email: Westafrica@dahuatech.com

## Dahua Thailand

Tel: +66 2541 5188  
Email: info.th@dahuatech.com

## Dahua Republic of Korea

Tel: +82-2-6486-8889  
Email: sales.kr@dahuatech.com

## Dahua Vietnam

Tel: +84 1900 2620  
Email: info.Dahuvietnam@dahuatech.com

## Dahua Technology Japan

Tel: +81-3-6661-6818  
Fax: +81-3-6661-6857  
Email: Dahua\_Japan@dahuatech.com

## Dahua Technology India Private Limited

Tel: +91 124 4569100  
Email: sales.india@dahuatech.com

\*Design and specifications are subject to change without notice.

Ver. 1, Jan. 2024

## DAHUA TECHNOLOGY

Add: No.1199 Bin'an Road, Binjiang District, Hangzhou, China. 310053  
Email: overseas@dahuatech.com  
Website: www.dahuasecurity.com



YouTube



LinkedIn



Partner App



Website