

ENABLING A SAFER SOCIETY AND SMARTER LIVING

**Dahua CEE & Nordic**  
Tel: +48 223957400  
Email: dh.cen@dahuatech.com

**Dahua Technology Poland SP.ZO.O**  
Tel: +48 223957400  
Email: biuro.pl@dahuatech.com

**Dahua Technology SRB D.O.O**  
Tel: +38 1 (11) 4429999  
Email: dh.srb@dahuatech.com

**Dahua Technology Denmark Aps**  
Email: Nordic.ne@dahuatech.com

**Dahua Technology Hungary LTD**  
Tel: +36 17899852  
Email: sales.hu@dahuatech.com

**Dahua Technology Bulgaria EOOD**  
Tel: +35929950013  
Support: support.bg@dahuatech.com

**Dahua Technology SRL**  
Email: marketing.ro@dahuatech.com

**Dahua Technology Czech.s.r.o.**  
Tel: +420 225 986 001  
Email: admin.cz@dahuatech.com

**Dahua Guvenlik Teknolojileri Sanayi ve Ticaret A.S.**  
Email: sales.tr@dahuatech.com

**Dahua Technology Middle East FZE**  
Email: info.me@dahuatech.com

**Dahua Technology Mexico S.A. DE C.V.**  
Tel: +52 55 67231936  
Email: sales.mx@dahuatech.com  
Support: support.mx@dahuatech.com

**Dahua Technology Colombia S.A.S.**  
Tel: +57 6013106176  
Email: marketing.co@dahuatech.com  
Support: support.co@dahuatech.com

**Dahua Technology Perú S.A.C**  
Tel: +511 500-8555  
Email: sales.pe@dahuatech.com  
Support: support.pe@dahuatech.com

**Dahua Technology Chile SpA**  
Tel: +56 232705421  
Email: sales.cl@dahuatech.com  
Support: support.chile@dahuatech.com

**Dahua Technology Argentina S.A.**  
Email: project.ar@dahuatech.com

**Dahua Technology Panama S.A.**  
Email: sales.pa@dahuatech.com  
Support: support.pa@dahuatech.com

**Dahua Brazil**  
Tel: +55 11 32511871  
Suporte Técnico: suporte.br@dahuatech.com  
Vendas: comercial.br@dahuatech.com

**Dahua Technology USA Inc.**  
Tel: +1 (949) 679-7777  
Email: sales.usa@dahuatech.com  
Support: support.usa@dahuatech.com

**Dahua Technology Canada**  
Tel: +1 877-606-1590  
Email: sales.usa@dahuatech.com  
Support: support.usa@dahuatech.com

**Dahua Europe BV**  
Tel: +31 (0) 85-0715700  
Email: sales.benelux@dahuatech.com  
Support: support.benelux@dahuatech.com

**Dahua Iberia, S.L.**  
Tel: +34 917649862  
Email: sales.iberia@dahuatech.com  
Support: support.iberia@dahuatech.com

**Dahua Technology Italy s.r.l.**  
Tel: +39 02 99912900  
Email: info.italy@dahuatech.com  
Support: support.italy@dahuatech.com

**Dahua Technology GmbH**  
Tel: +49 211 2054 4120  
Email: sales.de@dahuatech.com  
Support: support.de@dahuatech.com

**Dahua Technology France**  
Tel: +33 (0) 1 48 53 70 53  
Email: sales.france@dahuatech.com  
Support: support.france@dahuatech.com

**Dahua Singapore**  
Tel: +65 65380952  
Email: sales.sg@dahuatech.com

**Dahua Malaysia**  
Tel: +60376620732  
Email: sales.my@dahuatech.com

**Dahua Indonesia**  
Tel: +6227893330  
Email: sales.id@dahuatech.com  
Support: support.id@dahuatech.com

**Dahua Australia**  
Tel: +61 290306000  
Email: sales.oc@dahuatech.com

**Dahua New Zealand**  
Tel: +64 09 2823467  
Technical Hotline: 0800 854 857  
Email: Dahua\_NZ@dahuatech.com

**Dahua Philippines**  
Email: Dahua\_Philippines@dahuatech.com

**Dahua Russia (Dahua Technology Rus LLC.)**  
Tel: 8 (800) 707-67-66  
Email: info.ru@dahuatech.com

**Dahua Kazakhstan (Dahua Technology Kazakhstan LLP)**  
Tel: +7 727 3110838  
Email: sales.kz@dahuatech.com

**Dahua Uzbekistan (OOO "Dahua Vision")**  
Tel: +998 781488666

**Dahua Technology Ukraine Office**  
Tel: +380674011526  
Email: dahua.ukraine@dahuatech.com

**Dahua Technology UK Limited**  
Tel: +44 (0) 1628 613 500  
Email: sales.uk@dahuatech.com  
Support: support.uk@dahuatech.com

**Dahua Technology South Africa (Pty) Ltd | Head Office**  
Office Line: +27 10 593 3242  
WhatsApp Business Help-Line: +27 84 072 9260  
Toll-Free Help-Line: 080 099 0064  
Email: sales.za@dahuatech.com  
Support: support.za@dahuatech.com

**Dahua Technology Nigeria Representative Ltd.**  
Email: Westafrica@dahuatech.com

**Dahua Thailand**  
Tel: +66 2541 5188  
Email: info.th@dahuatech.com

**Dahua Republic of Korea**  
Tel: +82-2-6486-8889  
Email: sales.kr@dahuatech.com

**Dahua Vietnam**  
Tel: +84 24 3202 6616  
Email: DH\_VIET@dahuatech.com

**Dahua Technology Japan**  
Tel: +81-3-6661-6818  
Fax: +81-3-6661-6857  
Email: Dahua\_Japan@dahuatech.com

**Dahua Technology India Private Limited**  
Tel: +91 124 4569100  
Email: sales.india@dahuatech.com



\*Design and specifications are subject to change without notice.

Ver. 1, Dec. 2021

**DAHUA TECHNOLOGY**

Add: No.1199 Bin'an Road, Binjiang District, Hangzhou, China. 310053  
Email: overseas@dahuatech.com  
Website: www.dahuasecurity.com



YouTube



LinkedIn



Partner App



Website

**SECURITY SCREENING**  
PRODUCTS AND SOLUTIONS

# CONTENTS

## 01 Metal Detector

- Walk-Through Metal Detector
- Hand Held Metal Detector

## 02 Screening Machine & Server

- Security Screening Machine
- AI Security Screening Server

## 03 WIS

Waythcan Intelligent System

## 04 Other Products

- Liquid Scanner
- Explosive/Narcotics Trace Detector
- Automatic Retractable Bollard

## 05 Key Cases

## About Us

Company  
Introduction

# COMPANY INTRODUCTION

## About Us

Zhejiang Dahua Technology Co., Ltd. (Dahua Technology) is a world-leading video-centric smart IoT solution and service provider. Based on technological innovations, Dahua Technology offers end-to-end security solutions, systems, and services to create value for city operations, corporate management, and consumers.

The company continues to explore emerging opportunities based on video IoT technologies and has already established businesses in security screening, machine vision, video conferencing systems, professional drones, smart fire safety, automobile technologies, smart storage, robotics, etc.



**waythcan**

Zhejiang Huajian Technology Co., Ltd. (Huajian Technology), is Dahua Technology holding company. Which inherit dahua technology award-winning deep-learning algorithms, Image and Signal Processing Technology, providing a portfolio of solutions composed of project-oriented products including WTMD, Security Screening system and software platform, delivering precise, reliable and comprehensive AI solutions to verticals including government, retail, energy, finance and transportation. Huajian technology is waythcan trademark owner.

### AI X-ray image recognize

Powered by AI chip and deep learning algorithm, Waythcan provides comprehensive human-oriented solutions, making it possible to quickly and accurately act on what matters to you. In addition, it provides effective AI overlay to locate prohibited objects, and various prohibited objects data for business analysis .

### Advanced Metal detector

Waythcan combines deep learning algorithm with metal detection technology to help users achieve metal material distinction, highly accuracy metal positioning and highly accurate metal alarming.

## Applications

### DR Imaging

The Dahua Waythcan boasts multiple signal processing solutions, which provide image correction, image enhancement, and real-time image processing technology for fast digital radiographic (DR) imaging and control

### Waythcan Ecosystem

The Dahua Waythcan products is compatible with major third party technology partners. Besides, the Waythcan Ecosystem provides sufficient API for our technology partners.

# Walk-Through Metal Detector

## High Sensitivity Metal Detection

- 33/18/6 detection zones with corresponding indicator lights.
- Counts the number of passing people and the number of metal alarms.
- Digital signal processing and filtering system ensure exceptional immunity to electromagnetic interference.
- Adjustable Frequency: allows adjustment when operating in proximity with other WTMD or other environmental noise sources

## Multi-Scene Application

Supports multiple application scenarios and customized scenarios, and offers easy to change sensitivity.



Up to 80 programs and 10 extra customized programs, all offering different and easy to change sensitivity.

- Prison & Count provides better detection sensitivity
- Airport & Traffic Station suit large throughput to ensure safety.
- Building have better Innocuous Filter
- Magnetic detects ferromagnetic metals and filters out non-ferromagnetic metals
- International Security Programs are also included

### Contraband detect

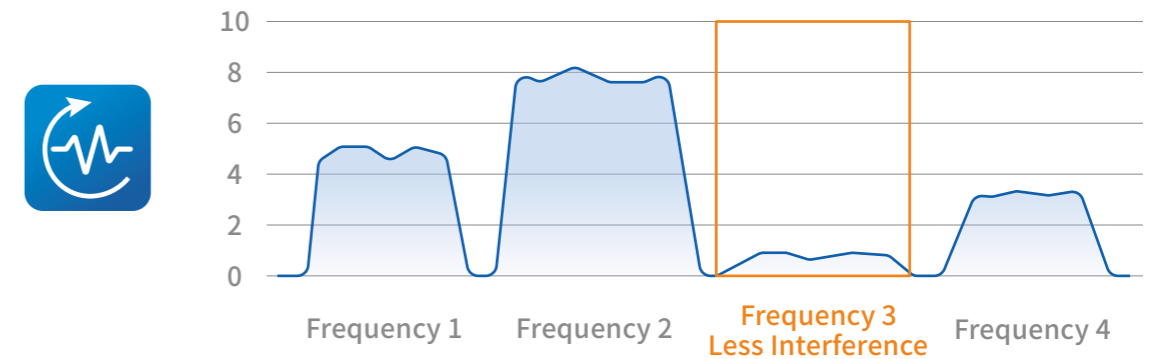
		Handgun
		Dagger
		Pocket Knife

### Innocuous Filter

		Glasses
		Keys & Coins
		Belts & Watch

## Auto-search Frequency

The auto search frequency function greatly simplifies configuration. The system calculates the immunity of every frequency, and automatically selects the lowest immunity frequency.



## Traffic Light

Built-in traffic light to guide people passing through the WTMD.

**Green light:** Allows people to proceed to the denoted direction

**Red light:** Prohibits people from passing through



## Random Alarm



Generate an audible and visual signal on a percentage of persons passing through the WTMD who did not cause an alarm. It shall be possible to set the percentage.

## Two Control Methods



Adopts a 7-inch full color touch screen LCD display and remote controller, which supports two control methods: touch screen and remote control.

› Cyber Security



Supports 2-level user. The operator and the administrator have different permissions. Strong password verification to ensure cybersecurity.

› Multi-language

Supports local language and offers pre-installed multiple languages to meet the market demand in various countries.



› Build-in UPS



Equipped with built-in Uninterruptible Power Supply (UPS) module and works with back-up sealed lead acid battery. The UPS module supports battery charging and status monitoring, as well as equipment powering when the main source is not available, making it suitable for various application scenarios that require continuous operations.

› Networking

Supports the parameter configuration of the device via network; Supports platform management. Supports Dahua DSS Pro, Waythcan WIS software and Dahua Configtool. Supports network SDK for third-party platform integration.



› Thermal Temperature Monitoring



4MP@25/30 fps



Face Detection



Body Temperature Monitoring

Thermal body temperature monitoring features:

Non-contact temperature monitoring; face temperature monitoring

Temperature accuracy:  $\pm 0.5^{\circ}\text{C}$  (without black body)

Temperature filtering: adjustable threshold (a temperature that exceeds the threshold will trigger the alarm light)

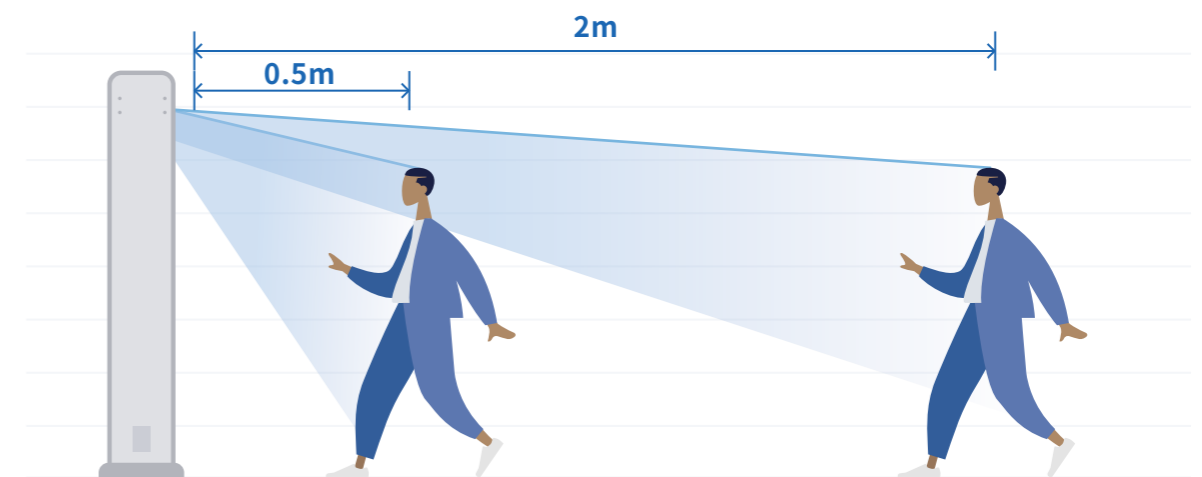
Dual image fusion (visible image: 4MP; thermal image: 256×192)

› Wide Monitoring Area

Thermal camera field of view: H: 50.6°, V: 37.8°

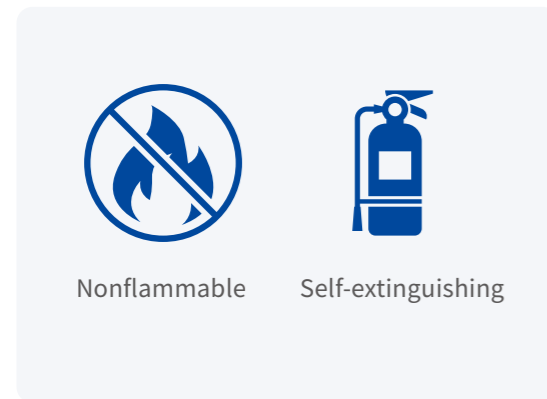
Detection distance: 0.5m to 2m

Target height: 1.2m to 1.9m



› Fire Retardant

Fire Retardant High-Pressure Laminate (HPL) is safe, harmless, and sturdy. They are treated with imported fire retardant chemicals that minimize smoke emission and delay the rise in temperature, making it more resistant to fire.



› Safer Design

Safe to use with its 12V DC low voltage design  
Anti-loose power plug  
Anti-loose RJ45 connector



› Wide Temperature Range

Working temperature: -20 to 65 °C  
Complies with IEC 60068-2-1 and IEC 60068-2-2 standard tests  
Ensures stable operation in a semi-outdoor environment.







› Packaging Drop & Vibration Test

A walk-through metal detector is very heavy (max. 61kg). Sturdy packaging can help reduce damage during transit. We conduct drop and vibration tests to simulate package handling and road transportation, thus reducing the possibility of any damage.



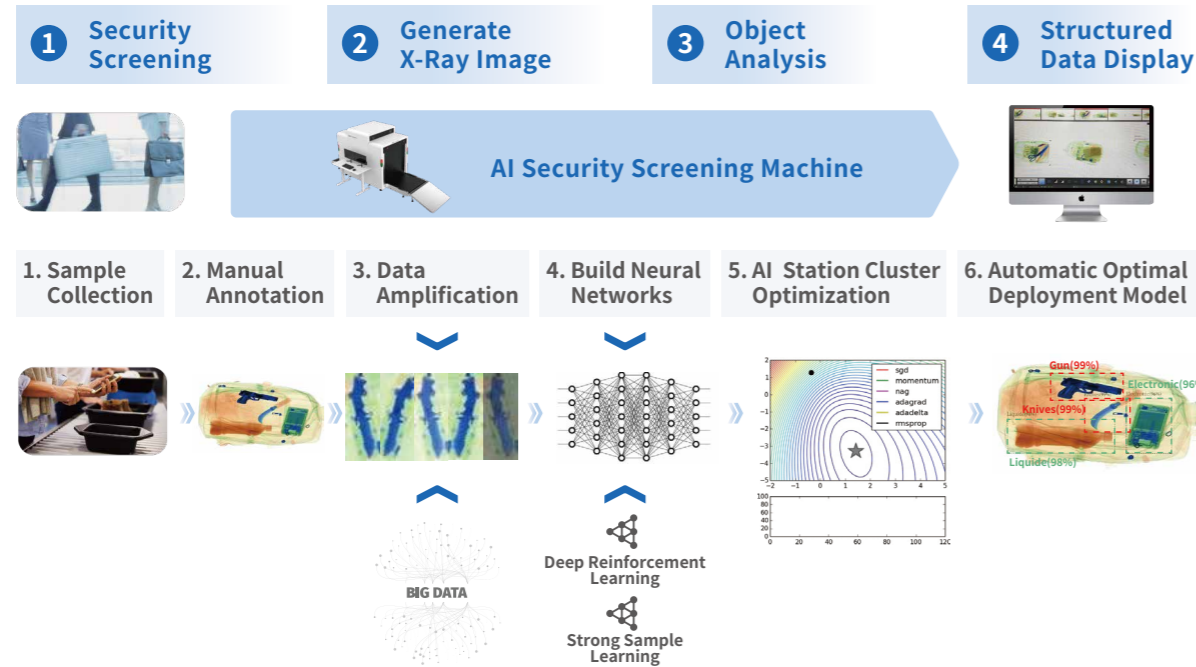
Module	ISC-D733-TS2	ISC-D718-TS2	ISC-D733-S2	ISC-D718-S2
Appearance				
Sensitivity	Ultra High	Ultra High	Ultra High	Ultra High
Detection Zones	33	18	33	18
Display	7-inch LCD touch screen	7-inch LCD touch screen	7-inch LCD touch screen	7-inch LCD touch screen
IR Remote	yes	yes	yes	yes
Advanced Metal Detection (AMD)	yes	yes	yes	yes
Built-in Programs	90	90	90	90
Sensitivity Levels	255	255	255	255
Frequency	Auto-search, 100	Auto-search, 100	Auto-search, 100	Auto-search, 100
Alarm Tones	9	9	9	9
Alarm Volumes	10	10	10	10
Alarm Duration	0-10s	0-10s	0-10s	0-10s
Random Alarm	yes	yes	yes	yes
Traffic Light	yes	yes	yes	yes
Backup battery (UPS)	yes	yes	yes	yes
2-level User	yes	yes	yes	yes
Multi-language	yes	yes	yes	yes
Networking	yes	yes	yes	yes
Thermal Camera				
Detector Type	Vanadium Oxide Uncooled FPA	Vanadium Oxide Uncooled FPA	-	-
Max. Resolution	256 × 192	256 × 192	-	-
Field of View	H: 50.6°, V: 37.8°	H: 50.6°, V: 37.8°	-	-
Resolution	4MP(2336 × 1752)	4MP(2336 × 1752)	-	-
IR Distance	≥ 30 m (98.43 ft)	≥ 30 m (98.43 ft)	-	-
RJ45	1x 10M/100M	1x 10M/100M	-	-
General Specification				
Power Supply	12V, 25W(Max) with 100-240V AC-DC power adapter	12V, 25W(Max) with 100-240V AC-DC power adapter	12V, 13W(Max) with 100-240V AC-DC power adapter	12V, 13W(Max) with 100-240V AC-DC power adapter
Overall Exterior Size	2210*919*542 mm	2210*919*542 mm	2210*919*542 mm	2210*919*542 mm
Packaging & Weight	2275*775*235 mm, 52Kg	2275*775*235 mm, 52Kg	2275*775*235 mm, 50Kg	2275*775*235 mm, 50Kg
Passageway Interior Size	2000*760*500 mm	2000*760*500 mm	2060*760*500 mm	2060*760*500 mm
Operating Temperature	-20°C to +65°C	-20°C to +65°C	-20°C to +65°C	-20°C to +65°C
Certification	CE-LVD, CE-EMC, CE-RED, FCC, ROHS	CE-LVD, CE-EMC, CE-RED, FCC, ROHS	CE-LVD, CE-EMC, CE-RED, FCC, ROHS	CE-LVD, CE-EMC, CE-RED, FCC, ROHS
Warranty	2 years	2 years	2 years	2 years

Module	ISC-D118-T	ISC-D118	ISC-D106	ISC-D109L
Appearance				
Sensitivity	High	High	High	Normal
Detection Zones	18	18	6	9
Display	3.5-inch LCD	3.5-inch LCD	3.5-inch LCD	Two sets of 5-digit high-brightness red LED
IR Remote	yes	yes	-	-
Advanced Metal Detection (AMD)	-	-	-	-
Built-in Programs	12	12	12	99
Sensitivity Levels	255	255	255	400
Frequency	Auto-search, 20	Auto-search, 20	Auto-search, 20	Auto-search, 20
Alarm Tones	9	9	9	99
Alarm Volumes	10	10	10	10
Alarm Duration	0-10s	0-10s	0-10s	0-10s
Random Alarm	-	-	-	-
Traffic Light	-	-	-	-
Backup battery (UPS)	Customize	Customize	Customize	Customize
2-level User	-	-	-	-
Multi-language	yes	yes	yes	-
Networking	yes	yes	Upgrade Firmware	Upgrade Firmware
Thermal Camera				
Detector Type	Vanadium Oxide Uncooled FPA	-	-	-
Max. Resolution	256 × 192	-	-	-
Field of View	H: 50.6°, V: 37.8°	-	-	-
Resolution	4MP(2336 × 1752)	-	-	-
IR Distance	≥ 30 m (98.43 ft)	-	-	-
RJ45	1x 10M/100M	-	-	-
General Specification				
Power Supply	12 V, 11W(Max), power adapter (included): 100 V-240 V AC, 50/60 Hz	12 V, 11W(Max), power adapter (included): 100 V-240 V AC, 50/60 Hz	12 V, 11W(Max), power adapter (included): 100 V-240 V AC, 50/60 Hz	12 V, 11W(Max), power adapter (included): 100 V-240 V AC, 50/60 Hz
Overall Exterior Size	2208*866*488mm	2208*866*488mm	2208*866*488mm	2208*824*340mm
Packaging & Weight	2275*700*220 mm, 47Kg	2275*700*220 mm, 47Kg	2275*700*220 mm, 47Kg	2275*700*220 mm, 25Kg
Passageway Interior Size	2003*720*393mm	2003*720*393mm	2003*720*393mm	2000*720*340 mm
Operating Temperature	-20°C to +65°C	-20°C to +65°C	-20°C to +65°C	-20°C to +65°C
Certification	CE-LVD, CE-EMC, CE-RED, FCC, ROHS	CE-LVD, CE-EMC, CE-RED, FCC, ROHS	CE-LVD, CE-EMC, CE-RED, FCC	CE-LVD, CE-EMC, CE-RED, FCC
Warranty	2 years	2 years	2 years	1 year

Module	ISC-H103	ISC-H002	ISC-H001
Appearance			
Sensitivity	Ultra High	Ultra High	High
Detection Zones	1	1	1
Sensitivity Levels	4	4	2
Display	Supports sound, light or vibration alarm	Supports sound, light or vibration alarm	Supports sound, light or vibration alarm
Metal Induction Intensity Level	3	4	1
Low Battery Alert	Yes	Yes	Yes
Power Supply	AA battery or rechargeable battery	AA battery or rechargeable battery	6F22/15F8H 9V battery or rechargeable battery
Overall Exterior Size	360 mm × 82.5 mm × 42.5 mm	378 mm × 80 mm × 36 mm	420 mm × 90 mm × 45 mm
Packaging & Weight	410 mm × 130 mm × 70 mm, 800g	433 mm × 130 mm × 70 mm, 620g	443 mm × 110 mm × 63mm, 500g
Operating Temperature	-20°C to +60°C	-20°C to +65°C	-20°C to +55°C
Certification	CE-LVD, CE-EMC, FCC, RoHS	CE-LVD, CE-EMC, FCC	CE-LVD, CE-EMC, FCC, RoHS
Warranty	2 years	2 years	2 years

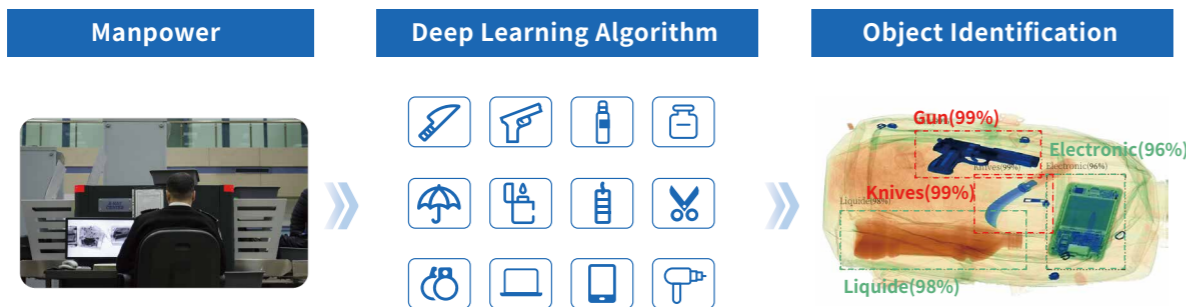
# Security Screening Machine

## Prohibited Object Recognition



## Object Identification Improves Efficiency

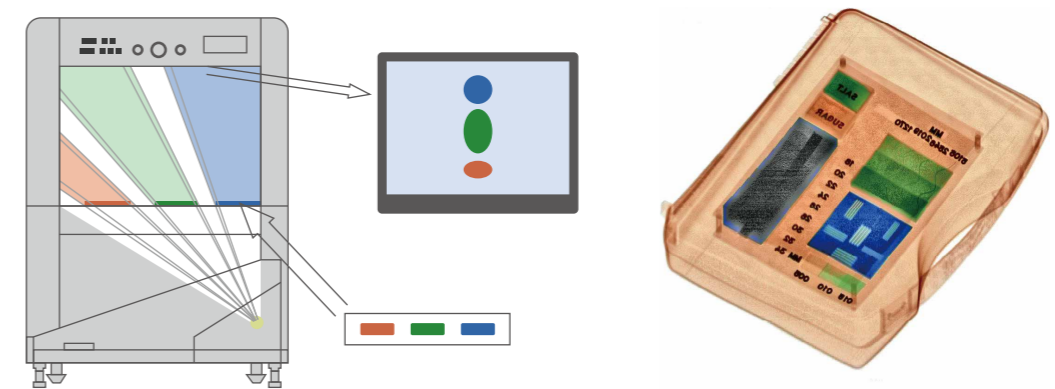
The built-in deep learning algorithm can realize object recognition with high accuracy without relying on staff and personnel. When prohibited objects are detected, they can be marked with different color according to danger level. It assists security inspectors to quickly catch suspected individuals, reduces pressure of security personnel, and improves work efficiency.



Recognizes 22 types of objects: guns, fireworks, spray cans, knives, axes, scissors, lighter fluid, nail polish, bottled liquids, glass bottles, thermos bottles, plastic bottles, handcuffs, nightsticks, brass knuckles, lighters, tools, electronic products, mobile phones, powerbanks, laptops and umbrellas.

## Image Distortion Correction

X-ray system uses L-shaped detector array system. The same objects have different projections on the detector. Our system offers perfect image distortion correction which ensures that the most accurate image of the object being scanned is displayed.



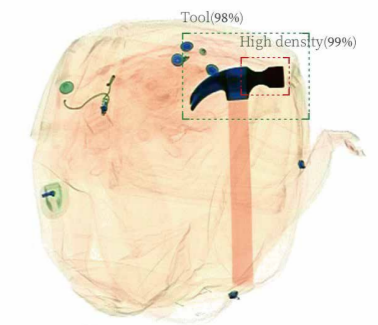
## Material Distinction

Our system displays the object's material composition using three different basic colors. The effective atomic number  $Z_{eff}$  are results from the atomic and molecular composition of the inspected objects. The color indicates the kind of material, while the brightness of the color indicates the thickness of material.

Zeff	Objects
1-10	Organic: Water, oil, plastic, wood, paper, food, etc.
10-18	Mixed: Sand, soil, glass, rubber, aluminum, etc.
$\geq 18$	Metal: Iron, steel, wire, brass, etc.

## High Density Alert

High density alert uses AI overlay to check materials that are too dense for X-rays to penetrate through, which can help draw the attention of operators regarding prohibited objects. In normal imaging mode, such objects appear black.





### › Better Image Quality

#### High Penetration

The device is equipped with High performance X-ray generator and uses high-energy x-rays to achieve higher penetration.

#### Wire Resolution & X-ray Protection

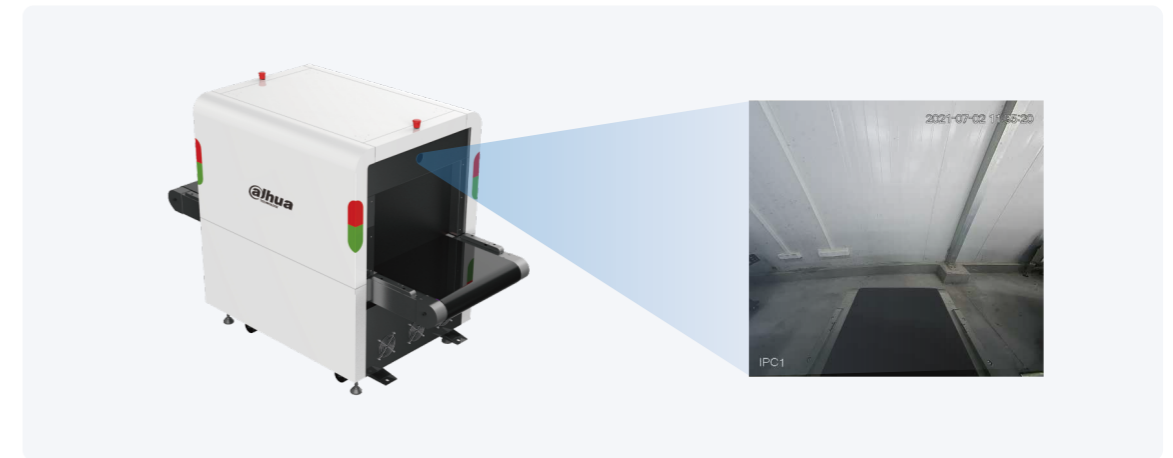
The device uses independently developed image algorithm, achieving max 40 AWG (0.0787mm) wire resolution. Its x-ray protection is higher than the international standard. The leakage dose rate is less than 0.9  $\mu$ Gy/h.

#### Image Processing Functions

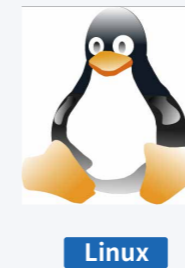
		
		
		
		

### › Built-in Baggage Surveillance

There is a built-in camera in each end of the tunnel. It monitors the behavior of passengers when they put in and take back their baggage. The video stream can be stored in the server of security screening machine. Live view of the camera can also be played on the control display.

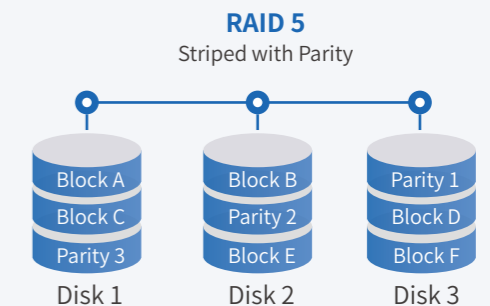


### › Greater Data Security



The Dahua security screening machine uses Linux-based operation system, making it more secure and more stable. It offers better performance compared with other OS.

Supports HDD storage capacity management and RAID Disk mode includes: single disk, RAID0/1/5 (enterprise-level), global hot spare. Uses RAID1/5 to achieve better data reliability, availability and performance.



› Multi-language



Supports local language and pre-installed multiple languages to meet the market demand in various countries.

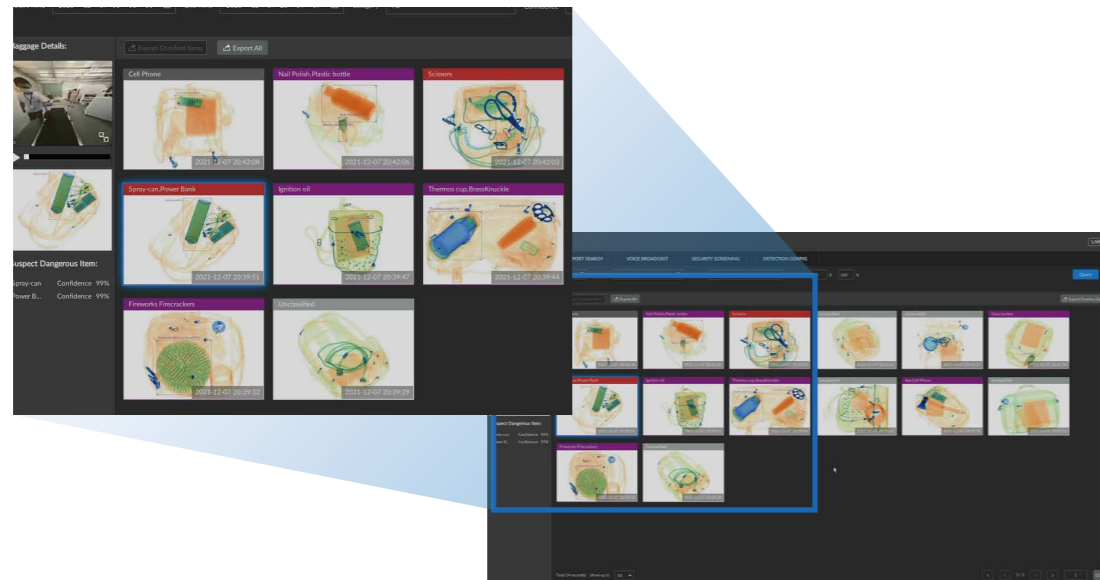
› Networking






Supports platform management and parameter configuration of the device via network.  
Supports Dahua DSS Pro, Waythcan WIS software and Dahua Configtool.  
Supports network SDK to integrate with third-party platforms.

› People Baggage Linkage

When checking baggage images:  
System can link 2 camera recordings.  
The recordings can show the luggage that carries Prohibited objects.



Module	ISC-M5030	ISC-M5030A	ISC-M6040
Appearance			
Main Processor	Intel dual-core Processor	Intel quad-core processor	Intel dual-core Processor
RAM	8G; Expandable to 32 G	8G	8G; Expandable to 32 G
OS	Embedded Linux	Embedded Linux	Embedded Linux
Wire Resolution	Typical: 40 AWG (0.08 mm) Standard: 38 AWG (0.1 mm)	Typical: 40 AWG (0.08 mm) Standard: 38 AWG (0.1 mm)	Typical: 40 AWG (0.08 mm) Standard: 38 AWG (0.1 mm)
Penetration	Typical: 37 mm; Standard: 36 mm	8 mm	Typical: 37 mm; Standard: 36 mm
X-ray generator	Single-view	Single-view	Single-view
Generator Anode Voltage	160 Kv	80 Kv	160 Kv
Detector	Dual Energy	Single Energy	Dual Energy
Leakage Doserate	≤0.9μSv/h(μGy/h)	≤0.9μSv/h(μGy/h)	≤0.9μSv/h(μGy/h)
Tunnel Size	500 mm x300 mm	500 mm x300 mm	620 mm x420 mm
Conveyor Speed	0.2 m/s	0.2 m/s	0.2 m/s
Conveyor Capacity	150Kg	80Kg	170Kg
Conveyor Hight	approx. 665 mm	approx. 665 mm	approx. 665 mm
Image Enhancement	color/black and white, local enhancement, super enhancement, edge enhancement, image scanning, organic stripping, metal stripping, mixture stripping, Inverse, high-energy enhancement, low-energy enhancement, light, dark, density threat alert Z7/Z8/Z9, high density alert, AI overlay, vertical flip, pseudo color and more	color/black and white, local enhancement, super enhancement, edge enhancement, image scanning, organic stripping, metal stripping, mixture stripping, Inverse, penetration enhancement, light, dark, density threat alert Z7/Z8/Z9, high density alert, AI overlay, vertical flip, pseudo color and more	color/black and white, local enhancement, super enhancement, edge enhancement, image scanning, organic stripping, metal stripping, mixture stripping, Inverse, high-energy enhancement, low-energy enhancement, light, dark, density threat alert Z7/Z8/Z9, high density alert, AI overlay, vertical flip, pseudo color and more
Live View	Displays X-ray image and camera live view, and AI overlays		
Object Recognition	Recognizes and highlights objects with dynamic bounding AI overlays		
Type Identification	Recognizes 22 types of objects: Guns, fireworks, spray cans, knives, axes, scissors, lighter fluid, nail polish, bottled liquids, glass bottles, thermos bottles, plastic bottles, handcuffs, nightsticks, brass knuckles, lighters, tools, electronic products, mobile phones, powerbanks, laptops and umbrellas	Recognizes 21 types of objects: Guns, fireworks, spray cans, knives, axes, scissors, nail polish, bottled liquids, glass bottles, thermos bottles, plastic bottles, handcuffs, nightsticks, brass knuckles, lighters, tools, electronic products, mobile phones, powerbanks, laptops and umbrellas	Recognizes 22 types of objects: Guns, fireworks, spray cans, knives, axes, scissors, nail polish, bottled liquids, glass bottles, thermos bottles, plastic bottles, handcuffs, nightsticks, brass knuckles, lighters, tools, electronic products, mobile phones, powerbanks, laptops and umbrellas
Danger Level	High risk, warning, and safe; can be customized		
Picture Storage	Min 1 million pictures with object info and types		
Zoom in	1-64x zoom in	1-64x zoom in	1-64x zoom in
Video Output	2 channels of display source output; 1920 x1080 Max	1 channel of display source output; 1920 x1080 Max	2 channels of display source output; 1920 x1080 Max
Video Input	12 channels of video input; Supports 4K, H.265, H.264	4 channels of video input; Supports 4K, H.265, H.264	12 channels of video input; Supports 4K, H.265, H.264
Audio Output	2 channels; AUX out (3.5 mm)	1 channel; AUX out (3.5 mm)	2 channels; AUX out (3.5 mm)
Built-in Disk	4 x 10T SATA disks max; 1 x 4T disk by default	6T SATA disk max; 1T disk by default	4 x 10T SATA disks max; 1 x 4T disk by default
Disk Mode	Single disk; RAID0/1/5 (enterprise-level); global hot spare	Single disk	Single disk; RAID0/1/5 (enterprise-level); global hot spare
Network Port	1xRJ45 1000M port; 2xRJ45 POE 100M ports	1xRJ45 1000M port	1xRJ45 1000M port; 2xRJ45 POE 100M ports
Ports	1x RS232, 1x Alarm Output	1x RS232, 1x Alarm Output, 2x USB3.0	1x RS232 for keyboard, 1x Alarm Output
General Specifications			
Power Supply	AC 220-240V; AC 100-130V (optional)	AC 220-240V; AC 100-130V (optional)	AC 220-240V; AC 100-130V (optional)
Typical/Max Power Consumption	500W / 1KW	220W / 650W	500W / 1KW
Operating Temperature	0 °C to +45 °C (+32 °F to +113 °F)	0 °C to +45 °C (+32 °F to +113 °F)	0 °C to +45 °C (+32 °F to +113 °F)
Dimensions & Weight	1664 mm* 766 mm* 1202 mm, 360Kg	1664 mm* 766 mm* 1202 mm, 270 Kg	1993 mm* 870 mm* 1297 mm, 420Kg
Monitor	1 set, 21.5" LCD monitor	1 set, 21.5" LCD monitor	1 set, 21.5" LCD monitor
Accessories	roller table x1 / simple special keyboard x1 / mouse x1	roller table x1 / simple special keyboard x1 / mouse x1	roller table x1 / special keyboard x1 / mouse x1
Package Dimensions & Weight	1824 mm* 1044 mm* 1448 mm; 490 kg	1824 mm* 1044 mm* 1448 mm; 410 kg	2142 mm* 1132 mm* 1542 mm; 590 kg
Operate table	-	-	-
Certification	CE-MD, CE-LVD, CE-EMC, FCC, ROHS	CE-MD, CE-LVD, CE-EMC, FCC	CE-MD, CE-LVD, CE-EMC, FCC, ROHS
Warranty	2 years	2 years	2 years

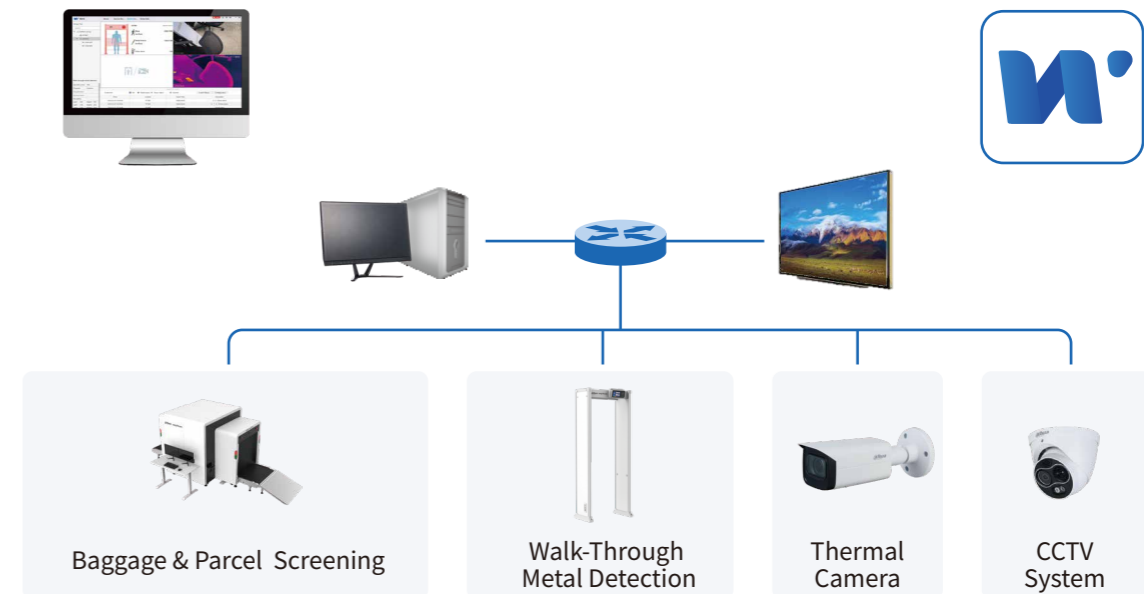
Module	ISC-M6550	ISC-M6550A	ISC-M6550D
Appearance			
Main Processor	Intel dual-core Processor	Intel quad-core processor	Intel Quad-core
RAM	8G; Expandable to 32 G	8G	16G; Expandable to 32 G
OS	Embedded Linux	Embedded Linux	Embedded Linux
Wire Resolution	Typical: 38 AWG (0.1 mm) Standard: 36 AWG (0.13 mm)	Typical: 40 AWG (0.08 mm) Standard: 38 AWG (0.1 mm)	Typical: 38 AWG (0.1 mm) Standard: 36 AWG (0.13 mm)
Penetration	Typical: 36 mm; Standard: 34 mm	8 mm	Typical: 36 mm; Standard: 34 mm
X-ray generator	Single-view	Single-view	Dual-view
Generator Anode Voltage	160 Kv	80 Kv	160 Kv
Detector	Dual Energy	Single Energy	Dual Energy
Leakage Doserate	≤0.9μSv/h(μGy/h)	≤0.9μSv/h(μGy/h)	≤0.9μSv/h(μGy/h)
Tunnel Size	650 mm x 500 mm	650 mm x 500 mm	650 mm x 500 mm
Conveyor Speed	0.2 m/s	0.2 m/s	0.2 m/s
Conveyor Capacity	170Kg	80Kg	170KG
Conveyor Hight	approx. 665 mm	approx. 665 mm	approx. 665 mm
Image Enhancement	color/black and white, local enhancement, super enhancement, edge enhancement, image scanning, organic stripping, metal stripping, mixture stripping, Inverse, high-energy enhancement, low-energy enhancement, light, dark, density threat alert Z7/Z8/Z9, high density alert, AI overlay, vertical flip, pseudo color and more	color/black and white, local enhancement, super enhancement, edge enhancement, image scanning, organic stripping, metal stripping, mixture stripping, Inverse, penetration enhancement, light, dark, density threat alert Z7/Z8/Z9, high density alert, AI overlay, vertical flip, pseudo color and more	color/black and white, local enhancement, super enhancement, edge enhancement, image scanning, organic stripping, metal stripping, mixture stripping, Inverse, high-energy enhancement, low-energy enhancement, light, dark, density threat alert Z7/Z8/Z9, high density alert, AI overlay, vertical flip, pseudo color and more
Live View	Displays X-ray image and camera live view, and AI overlays		
Object Recognition	Recognizes and highlights objects with dynamic bounding AI overlays		
Type Identification	Recognizes 22 types of objects: Guns, fireworks, spray cans, knives, axes, scissors, lighter fluid, nail polish, bottled liquids, glass bottles, thermos bottles, plastic bottles, handcuffs, nightsticks, brass knuckles, lighters, tools, electronic products, mobile phones, powerbanks, laptops and umbrellas	Recognizes 21 types of objects: Guns, fireworks, spray cans, knives, axes, scissors, nail polish, bottled liquids, glass bottles, thermos bottles, plastic bottles, handcuffs, nightsticks, brass knuckles, lighters, tools, electronic products, mobile phones, powerbanks, laptops and umbrellas	Recognizes 22 types of objects: Guns, fireworks, spray cans, knives, axes, scissors, lighter fluid, nail polish, bottled liquids, glass bottles, thermos bottles, plastic bottles, handcuffs, nightsticks, brass knuckles, lighters, tools, electronic products, mobile phones, powerbanks, laptops and umbrellas
Danger Level	High risk, warning, and safe; can be customized		
Picture Storage	Min 1 million pictures with object info and types		
Zoom in	1-64x zoom in	1-64x zoom in	1-64x zoom in
Video Output	2 channels of display source output; 1920 x 1080 Max	1 channel of display source output; 1920 x 1080 Max	2 channels of display source output; 1920 x 1080 Max
Video Input	12 channels of video input; Supports 4K, H.265, H.264	4 channels of video input; Supports 4K, H.265, H.264	12 channels of video input; Supports 4K, H.265, H.264
Audio Output	2 channels; AUX out (3.5 mm)	1 channel; AUX out (3.5 mm)	2 channels; AUX out (3.5 mm)
Built-in Disk	4 x 10T SATA disks max; 1 x 4T disk by default	6T SATA disk max; 1T disk by default	4 x 10T SATA disks max; 1 x 4T disk by default
Disk Mode	Single disk; RAID0/1/5 (enterprise-level); global hot spare	Single disk	Single disk; RAID0/1/5 (enterprise-level); global hot spare
Network Port	1xRJ45 1000M port; 2xRJ45 POE 100M ports	1xRJ45 1000M port	1xRJ45 1000M port; 2xRJ45 POE 100M ports
Ports	1x RS232 for keyboard, 1x Alarm Output	1x RS232, 1x Alarm Output, 2x USB3.0	1x RS232 for keyboard, 1x Alarm Output
General Specifications			
Power Supply	AC 220-240V; AC 100-130V (optional)	AC 220-240V; AC 100-130V (optional)	AC 220-240V; AC 100-130V (optional)
Typical/Max Power Consumption	500W / 1KW	220W / 650W	700W / 1.5KW
Operating Temperature	0 °C to +45 °C (+32 °F to +113 °F)	0 °C to +45 °C (+32 °F to +113 °F)	0 °C to +45 °C
Dimensions & Weight	2054mm* 916mm* 1435 mm, 460Kg	2024mm* 916mm* 1435 mm, 380Kg	2320 mm* 1295 mm* 1435 mm, 600Kg
Monitor	1 set, 21.5" LCD monitor	1 set, 21.5" LCD monitor	2 sets, 21.5" LCD monitor
Accessories	roller table x1 / special keyboard x1 / mouse x1	roller table x1 / simple special keyboard x1 / mouse x1	roller table x1 / special keyboard x1 / mouse x1
Package Dimensions & Weight	2185 mm* 1205 mm* 1655 mm; 680 kg	2185 mm* 1205 mm* 1655 mm; 580 kg	2490mm* 1478mm* 1618mm; 850 kg
Operate table	Package size 1276*376*200mm, 38.5Kg	Package size 1276*376*200mm, 38.5Kg	Package size 1276*376*200mm, 38.5Kg
Certification	CE-MD, CE-LVD, CE-EMC, FCC, ROHS	CE-MD, CE-LVD, CE-EMC, FCC	CE-MD, CE-LVD, CE-EMC, FCC, ROHS
Warranty	2 years	2 years	2 years

Module	ISC-M100100	ISC-M100100D
Appearance		
Main Processor	Intel Quad-core	Intel Quad-core
RAM	8G; Expandable to 32 G	16GB, Expandable to 32GB
OS	Embedded Linux	Embedded Linux
Wire Resolution	Typical: 36 AWG (0.13 mm) Standard: 34 AWG (0.16 mm)	Typical: 38 AWG (0.1 mm) Standard: 36 AWG (0.13 mm)
Penetration	Typical: 34 mm; Standard: 32 mm	Typical: 36 mm; Standard: 34 mm
X-ray generator	Single-view	Dual-view
Generator Anode Voltage	160 Kv	160 Kv
Detector	Dual Energy	Dual Energy
Leakage Doserate	≤0.9μSv/h(μGy/h)	≤0.9μSv/h(μGy/h)
Tunnel Size	1000 mm x 1000 mm	1000 mm x 1000 mm
Conveyor Speed	0.2 m/s	0.2 m/s
Conveyor Capacity	250Kg	250Kg
Conveyor Hight	approx. 300 mm	approx. 300 mm
Image Enhancement	color/black and white, local enhancement, super enhancement, edge enhancement, image scanning, organic stripping, metal stripping, mixture stripping, Inverse, high-energy enhancement, low-energy enhancement, light, dark, density threat alert Z7/Z8/Z9, high density alert, AI overlay, vertical flip, pseudo color and more	
Live View	Displays X-ray image and camera live view, and AI overlays	
Object Recognition	Recognizes and highlights objects with dynamic bounding AI overlays	
Type Identification	Recognizes 22 types of objects: Guns, fireworks, spray cans, knives, axes, scissors, lighter fluid, nail polish, bottled liquids, glass bottles, thermos bottles, plastic bottles, handcuffs, nightsticks, brass knuckles, lighters, tools, electronic products, mobile phones, powerbanks, laptops and umbrellas	
Danger Level	High risk, warning, and safe; can be customized	
Picture Storage	Min 1 million pictures with object info and types	
Zoom in	1-64x zoom in	1-64x zoom in
Video Output	2 channels of display source output; 1920 x 1080 Max	2 channels of display source output; 1920 x 1080 Max
Video Input	12 channels of video input; Supports 4K, H.265, H.264	12 channels of video input; Supports 4K, H.265, H.264
Audio Output	2 channels; AUX out (3.5 mm)	2 channels; AUX out (3.5 mm)
Built-in Disk	4 x 10T SATA disks max; 1 x 4T disk by default	4 x 10T SATA disks max; 1 x 4T disk by default
Disk Mode	Single disk; RAID0/1/5 (enterprise-level); global hot spare	Single disk; RAID0/1/5 (enterprise-level); global hot spare
Network Port	1 × RJ45 1000M port; 2 × RJ45 POE 100M ports	1 × RJ45 1000M port; 2 × RJ45 POE 100M ports
Ports	1x RS232 for keyboard, 1x Alarm Output	1x RS232 for keyboard, 1x Alarm Output
General Specifications		
Power Supply	AC 220-240V; AC 100-130V (optional)	AC 220-240V; AC 100-130V (optional)
Typical/Max Power Consumption	800W / 1KW	1KW / 1.5KW
Operating Temperature	0 °C to +45 °C (+32 °F to +113 °F)	0 °C to +45 °C
Dimensions & Weight	3599 mm* 1300mm* 1790mm, 1100Kg	3901 mm* 1790 mm* 1865 mm, 1400Kg
Monitor	2 sets, 21.5" LCD monitor	2 sets, 21.5" LCD monitor
Accessories	roller table x1 / special keyboard x1 / mouse x1	roller table x1 / special keyboard x1 / mouse x1
Package Dimensions & Weight	2965mm* 1800mm* 2200mm, 1300 Kg	2965mm*2140mm *2218mm; 1600 Kg
Operate table	Package size 1276*376*200mm, 38.5Kg	Package size 1276*376*200mm, 38.5Kg
Certification	CE-MD, CE-LVD, CE-EMC, FCC, ROHS	CE-MD, CE-LVD, CE-EMC, FCC, ROHS
Warranty	2 years	2 years

Model	ISC-S7408-VHD	ISC-S7408-2VHD
Appearance		
Name	Single-view AI Security Screening Server	Dual-view AI Security Screening Server
Main Features	8G; Expandable to 32 G	16GB, Expandable to 32GB
Main Features	AI Security Screening Server, Support Single-view Multi-energy Security Screening machine.support 22 kinds of object recognition. Recognizable objects include: Guns, fireworks, spray cans, knives, axes, scissors, lighter fluid, nail polish, bottled liquids, glass bottles, thermos bottles, plastic bottles, handcuffs, nightsticks, brass knuckles, lighters, tools, electronic products, mobile phones, powerbanks, laptops and umbrellas. Recognizable object type increases with software update.Luggage X-ray images storage and export. Support X-ray Inspection machine networking.	AI Security Screening Server, Support Dual-view Multi-energy Security Screening machine.support 22 kinds of object recognition. Recognizable objects include: Guns, fireworks, spray cans, knives, axes, scissors, lighter fluid, nail polish, bottled liquids, glass bottles, thermos bottles, plastic bottles, handcuffs, nightsticks, brass knuckles, lighters, tools, electronic products, mobile phones, powerbanks, laptops and umbrellas. Recognizable object type increases with software update.Luggage X-ray images storage and export. Support X-ray Inspection machine networking.
Raid	Supports RAID 0/1/5	Supports RAID 0/1/5
Video in	1 HDMI/VGA/DVI video input	2 HDMI/VGA/DVI video input
Video out	2HDMI/2VGA/2DVI video output	2VGA/2DVI video output
Support Security Screening Machine	1* Single-view	1* Dual-view
Storage	Up to 4 HDD support RAID5. Video stream, baggage image, alarm stroage	Up to 4 HDD support RAID5. Video stream, baggage image, alarm stroage
Power Supply	120V-240V AC, 35W (without load), 90W (full load)	120V-240V AC, 35W (without load), 90W (full load)
Overall Exterior Size	360.0 mm × 325.0 mm × 132.6 mm	360.0 mm × 325.0 mm × 132.6 mm
Packaging & Weight	523mm* 514mm* 330mm 10.8 kg	523mm* 514mm* 330mm 10.8 kg
Operating Temperature	0°C to +45°C	0°C to +45°C
RMA service	2 years	2 years

## WIS - Waythcan Intelligent System

### Waythcan Intelligent System



### WTMD Module

- SMB market with few checkpoints; Ideal for supervisors
- Real-time monitoring WTMD status
- Metal alarm linkage video
- Local event storage
- Event data export



### Security Screening machine Module





- SMB market with few checkpoints; Ideal for supervisors
- Real-time baggage monitoring screening
- Prohibited object alarm linkage video
- Local event storage, baggage image storage
- Event data export, and prohibited object data export



### Technical

Devices	Supported Devices	Walk Through Metal Detector, Security Screening Machine, IPC
	Add Device Method	IP/domain
WTMD Live Preview	Max. WTMD Can Be Opened at The Same Time	4
	Features	Monitoring, WTMD Status, Event, Alarm Recording, Stream Control
Alarm Record	Alarm type	People walk through, metal alarm, temperature alarm, network alarm, prohibited object alarm
	Alarm info	Zone number, alarm location diagram
Video	Compression Format	H.265/H.264
	Display Resolution	Up to 1920×1080
Playback	Video Playback Duration	24 hours
	Features	Snapshot, Record, Speed Up / Slow Down, Cut, Download

Module	XIS4000-L	XIS-L300
Appearance		
Detection Principle	Differences of Permittivity	Differences of Permittivity
Liquid Container	Non-Metallic Container	Non-Metallic Container and Metal Container
Scan Mode	-	Normal, Small, Special
Alarm Method	Sound & light alarm, image alarm	Sound & light alarm, image alarm
Operation Method	LCD, button operation	Touch screen operation
Maintenance & Calibration	No need for maintenance and calibration during normal use, and the Device performs power-on self test	No need for maintenance and calibration during normal use, and the Device performs power-on self test
Booting Time	≤2 s	≤5 s
Self-test Time	≤1 s	≤2 s
Storage	more than 10,000 detection records	more than 100,000 detection records
Double detection module	-	Support simultaneous detection
Detection Object	Flammable liquids in sealed container	Flammable liquids in sealed container
Detectable Container Material	Plastic/Glass/Ceramic	Plastic/Glass/Ceramic/Metal/Paper (no foil coating)
Detection Speed	1-2 s for non-metallic container	1-2 s for non-metallic container, <5 s for Metal Container
Detectable Container Size	Containers with liquid not less than 60 mm	60mm≤height≤400mm, 30mm≤diameter≤200mm
Minimum Detection Volume	50 ml	100 ml
False Alarm Rate	False alarm rate of pure water≤1%	False alarm rate of pure water≤1%
Alarm Reset	Reset after alarm	Reset after alarm
Data Transmission Port	USB	USB, Ethernet, Wifi, RS232
Power Switch	1	1
Product Dimension	214 mm × 50 mm × 79 mm	466mm*333mm*200mm
Product Color	Red and black	Dark grey
Package Dimension	430 mm × 285 mm × 150 mm	560mm*460mm*320mm
Product Weight	0.2 kg ± 0.02 kg	7kg
Power Supply	Battery	AC100V-240V(50/60Hz)
Power Consumption	-	36w
Operating Temperature	-20 °C to 55 °C	-10 °C to 55 °C
Storage Temperature	-20 °C to 55 °C	-10 °C to 55 °C
Operating Humidity	<95% (RH), non-condensing	<95% (RH), non-condensing
Storage Humidity	<95% (RH), non-condensing	<95% (RH), non-condensing

Module	XIS-S300	XIS4000-S
Appearance		
Detection Principle	Fluorescent Polymer Sensing Technology	Ion Mobility Spectroscopy (IMS) Technology
Minimum Detection Volume	TNT 1pg; Black Powder 1ng	1ng
Booting Time	7s	5 Mins
Analysis Time	≤5s	1.5s
Recovery Time	≤19s (Without alarm for 3 times)	≤55s
False Alarm Rate	Less than 1%	Less than 1%
Sampling Method	Two sampling methods, direct air sampling and wipe sampling	Two sampling methods, direct air sampling and wipe sampling
Alarm Method	Sound & light alarm, image alarm	Sound & light alarm, image alarm
Storage	More than 70,000 detection records, Allows data exporting via USB	More than 800,000 detection records
Explosives detectable types	Black Powder, TNT, DNT, RDX, NG, Tetryl, PETN, NA, HMX, NT, MNT, TATP, Semtex, C4, etc.	TNT, RDX, PETN, NG, NA, Black Powder, DNT, Tetryl, HMX, TNP, DINA, C4, Semtex, TATP, HMTD, HNS, Ngu, EGDN; New samples can be added as needed
Narcotics detectable types	-	Cocaine, Heroin, THC, Methamphetamine, Ketamine, Morphine, Doloretine, MDA, MDMA, Papaverine, Methylephedrine, Methcathinone, Synthetic cannabinoids (K2), LSD; New samples can be added as needed
Data Transmission Port	USB	Network, USB
Power Switch	1	1
Product Dimension	270mm*110mm*120mm	450mm*160mm*200mm
Product Color	Black	White & Blue
Package Dimension	420mm*350mm*180mm	565mm*360mm*270mm
Product Weight	1.1kg	3.82kg
Power Consumption	36W	148w
Operating Temperature	-10°C~55°C	-20°C~60°C
Storage Temperature	-10°C~55°C	-20°C~60°C
Operating Humidity	5-95%Rh, non-condensing	5-95%Rh, non-condensing
Storage Humidity	5-95%Rh, non-condensing	5-95%Rh, non-condensing
Power Supply	build-in battery, AC100V-240V(50/60Hz)	build-in battery, AC100-240(50/60Hz)

Model	ISC-Z0860A-06	ISC-Z0860A-08	ISC-Z0860A-10	ISC-Z0860A-12
Appearance				
Bollard Material	Stainless steel 304			
Foundation Box	Anti-corrosion Technology and Cataphoresis			
Operation Time	About 3s			
Passing Press	5,000 kg container truck			
Warning Part	LED warning light strip and 5 cm retroreflective belt			
Driving Mode	Independent hydraulic system			
Rising and Lowering Control	The rising and lowering of the bollard can be controlled by the retractable bollard controller			
Rising and LoweringReminder	The light strip flashes when the bollard is rising and lowering, stays on when it is fully raised, and stays off when it is lowered into the ground completely			
Emergency Control	The control valve can be manually released to lower the bollard during emergency power failure			
Operating Voltage	220 VAC ±10%			
Rated Power	350 W			
Max. Output Power	1200 W			
Operating Temperature	-30 °C to +55 °C ( -22 °F to +131 °F )			
IP Rating	IP68			
Product Dimensions	φ379.0 mm × 1120.0 mm			
Cylinder Diameter	φ219.0 mm ( ±0.5 mm )			
Lift Height	600.0 mm			
Cylinder Thickness	6.0 mm (±0.5mm)	8.0 mm (±0.5mm)	10.0 mm (±0.5mm)	12.0 mm (±0.5mm)
Packaging Dimensions	425 mm × 425 mm × 1145 mm			
Weight	94.0 kg	102.0 kg	110.0 kg	117.6 kg
Packaging Weight	98.0 kg	107.0 kg	114.0 kg	121.6 kg

Model	ISC-ZC03A	ISC-ZC06A
Appearance		
Control Mode	Manual button and remote control	
Appearance and Color	Yellow	
Operation Time	Motor running time 1-10 s adjustable	
Controllable Quantity	Max. 3 retractable bollards	Max. 6 retractable bollards
Manual Button	Yes	
Remote Control	Yes	
Emergency Control	The control valve can be manually released to lower the bollard during emergency power failure	
Protection	Reserved infrared ground sensor port and externally connected infrared ground sensor detection to protect vehicles	
Operating Voltage	200-240 VAC 50 HZ	
Rated Power	2400 W	
Max. Output Power	7200 W	
Operating Temperature	-30 °C to 50 °C ( -22 °F to 122 °F )	
Operating Humidity	5%-95%RH (non-condensing)	
Weight	15.5 kg	
IP Rating	IP54	
Product Dimensions	500.0 mm × 400.0 mm × 200.0 mm	
Packaging Dimensions	520.0 mm × 420.0 mm × 220.0 mm	
Packaging Weight	16.5 kg	

## Key Cases

### › Metro Project in Southeast Asia

Dahua deployed many units of intelligent security screening machine in a metro project of a country in Southeast Asia , including model 5030 security screening machine, and more. The solution significantly improves the efficiency of security inspection, enhances passenger experience, and protects the safety of commuters.



### › Ningbo Metro Line 5

Dahua deployed 50 units of intelligent security screening systems and equipment in Ningbo Metro Line 5, including 100100D and 6550D security screening machines, handheld metal detectors, liquid scanners, explosion-proof equipment, etc. It promotes the operation concept of intelligence, safety and beauty, thus improving the efficiency of security inspection, enhancing passenger experience, and protecting the safety of commuters.



### › World Internet Conference

Dahua provided video surveillance, metal detection and baggage security screening solution to this international event. AI-enabled X-ray machines assisted the security personnel in detecting prohibited items, realized the security screening of people entering the conference, and offered technological assistance to the event's overall security.



### › Logistics Projects in Hebei Province

Dahua deployed 13 high-speed intelligent security screening machines in the express couriers in several cities of Hebei Province. These intelligent equipment greatly help Hebei achieve high-speed, intelligent, and unattended logistics inspection, which guarantees the safety of delivered items in Hebei, and prevents prohibited items from being sent via express couriers.

